

<div>FEATURES</div> <ul style="list-style-type: none">Includes fully modulating economizer. (See Form ECO-184 for Economizer Specs).CO2 controller standard on economizer. Space or duct mounted CO2 sensor provided as option:<ul style="list-style-type: none">CO2WM - Wall Mount With LEDCO2DM - Duct MountLEED economizer option.Access for motor, blower, and blower drives.Adjustable motor sheave.Motor with automatic internal thermal protection.Modulating option includes fully programmable (factory set) variable frequency drive controlled by a differential pressure transducer designed to continuously monitor space pressure.	<div>DOWN DISCHARGE CENTRIFUGAL POWER EXHAUST AND ECONOMIZER FOR SSE YORK UNITS</div> <div>ZH/ZF/ZR 102-150: ZJ/XP/ZT/ZB 078-150</div> <table><tr><th rowspan="2">VOLTAGE</th><th colspan="4">External Static (in. W.G)</th><th rowspan="2">FLA</th><th rowspan="2">Hp</th><th rowspan="2">Wt</th></tr><tr><th>0.1</th><th>0.2</th><th>0.3</th><th>0.4</th></tr><tr><td>230V/3Ph</td><td>4,200 cfm</td><td>4,000 cfm</td><td>3,900 cfm</td><td>3,800 cfm</td><td>5.6</td><td rowspan="2">2</td><td rowspan="2">220 Lbs. (Includes Economizer)</td></tr><tr><td>460V/3Ph</td><td></td><td></td><td></td><td></td><td>2.8</td></tr></table>					VOLTAGE	External Static (in. W.G)				FLA	Hp	Wt	0.1	0.2	0.3	0.4	230V/3Ph	4,200 cfm	4,000 cfm	3,900 cfm	3,800 cfm	5.6	2	220 Lbs. (Includes Economizer)	460V/3Ph					2.8	<div>ProVent P/N</div> <table><tr><th>CONSTANT VOLUME</th><th>MODULATING</th></tr><tr><td>PEDCPRDLCDB25CS 208/230V 3Ph Selectable Dry Bulb</td><td>PEDCPRDLCDB25MS 208/230V 3Ph Selectable Dry Bulb</td></tr><tr><td>PEDCPRDLCEN25CS 208/230V 3Ph Enthalpy</td><td>PEDCPRDLCEN25MS 208/230V 3Ph Enthalpy</td></tr><tr><td>PEDCPRDLCDB46CS 460V 3Ph Selectable Dry Bulb</td><td>PEDCPRDLCDB46MS 460V 3Ph Selectable Dry Bulb</td></tr><tr><td>PEDCPRDLCEN46CS 460V 3Ph Enthalpy</td><td>PEDCPRDLCEN46MS 460V 3Ph Enthalpy</td></tr></table> <div>Note: For factory installed LEED economizer / power exhaust option, part number, FLOWECPRD3715, must be added.</div>				CONSTANT VOLUME	MODULATING	PEDCPRDLCDB25CS 208/230V 3Ph Selectable Dry Bulb	PEDCPRDLCDB25MS 208/230V 3Ph Selectable Dry Bulb	PEDCPRDLCEN25CS 208/230V 3Ph Enthalpy	PEDCPRDLCEN25MS 208/230V 3Ph Enthalpy	PEDCPRDLCDB46CS 460V 3Ph Selectable Dry Bulb	PEDCPRDLCDB46MS 460V 3Ph Selectable Dry Bulb	PEDCPRDLCEN46CS 460V 3Ph Enthalpy	PEDCPRDLCEN46MS 460V 3Ph Enthalpy
	VOLTAGE	External Static (in. W.G)					FLA	Hp	Wt																																				
		0.1	0.2	0.3	0.4																																								
	230V/3Ph	4,200 cfm	4,000 cfm	3,900 cfm	3,800 cfm	5.6	2	220 Lbs. (Includes Economizer)																																					
460V/3Ph					2.8																																								
CONSTANT VOLUME	MODULATING																																												
PEDCPRDLCDB25CS 208/230V 3Ph Selectable Dry Bulb	PEDCPRDLCDB25MS 208/230V 3Ph Selectable Dry Bulb																																												
PEDCPRDLCEN25CS 208/230V 3Ph Enthalpy	PEDCPRDLCEN25MS 208/230V 3Ph Enthalpy																																												
PEDCPRDLCDB46CS 460V 3Ph Selectable Dry Bulb	PEDCPRDLCDB46MS 460V 3Ph Selectable Dry Bulb																																												
PEDCPRDLCEN46CS 460V 3Ph Enthalpy	PEDCPRDLCEN46MS 460V 3Ph Enthalpy																																												
<div>PLEASE NOTE:</div> <div>1. Return air duct, dampers, return air grills are specific for each unit.</div> <div>2. For proper electrical wire sizing, Provent power exhaust full load amps need to be added to equation.</div>																																													
<div><div><div>LEED ECONOMIZER / POWER EXHAUST OPTION</div><ul style="list-style-type: none">ProVent P/N: FLOWECPRD3715Outside air measurement for dilution utilizing thermal dispersion technology and ASHRAE 62.1 compliant. Provides LEED credit by supplying feedback on ventilation system performance ensuring that the ventilation system maintains design requirements.Factory installed onto economizer/power exhaust standard.Provides analog outputs for BMS, visual or audible alert, and generates an alarm when conditions vary by 10% or more of set point.<div><div><div>Economizer</div><div>Thermal Dispersion Airflow Measurement System</div><div>Power Exhaust</div></div></div></div><div><div><div>amca CERTIFIED RATINGS</div><div>AIR LEAKAGE AIR PERFORMANCE</div><div>AIR MOVEMENT AND CONTROL ASSOCIATION INTERNATIONAL, INC.</div></div><div>Only Ruskin Company Model CD-60 is AMCA Certified</div></div><div><div><div><div>32 5/16"</div><div>7 3/8"</div><div>17"</div><div>22 15/16"</div></div><div><div>For units with SSE controller</div></div></div><div><div>Adjustable support legs included</div><div>Bottom of power exhaust sets 2" below unit base rail.</div></div></div></div>																																													
<div><div><div><div><div>ProVent</div></div></div><div><div>3847 WABASH DR. MIRA LOMA, CA 91725</div><div>PHONE (951) 685-1101 FAX (619) 872-9799</div></div></div><div><div>SUBMITTED TO: _____</div><div>COMPANY: _____</div><div>JOB NAME: _____</div><div>EQUIPMENT: _____</div><div>NOTES: _____</div></div><div><div>FORM NO: PE-88</div><div>DATE: 12/18/2023</div></div><div><div>PART NUMBER: PEDCPRDLCs SERIES</div><div>REV: 4</div><div>DRAWN BY: CNG</div></div></div>																																													

FEATURES

- CA Title 24 and FDD Compliant.
- Direct coupled style actuator standard.
- Stainless steel damper side seals.
- **AMCA certified CD-60 Airfoil dampers blades.**
- **Meets leakage rate as required by ASHRAE 90.1.**
- External linkage system.
- Mechanically secured outside air intake filter.
- Metal Filter 25-1/2" x 26-3/8" x 7/8" (exact) included

FEATURES (When Ordered With Control Options)

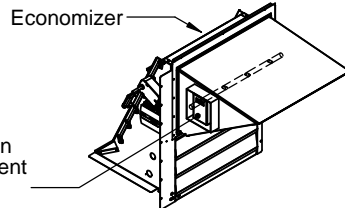
- Fully modulating damper controls with enthalpy, dry bulb and differential temperature sensor options.
- Selectable economizer changeover temperature set point.
- Requires part number 2ECO402 for Dual Enthalpy.
- CO2 controller standard.

Wall or duct mounted CO2 sensor provided as option:

- CO2WM - Wall Mount
- CO2DM - Duct Mount

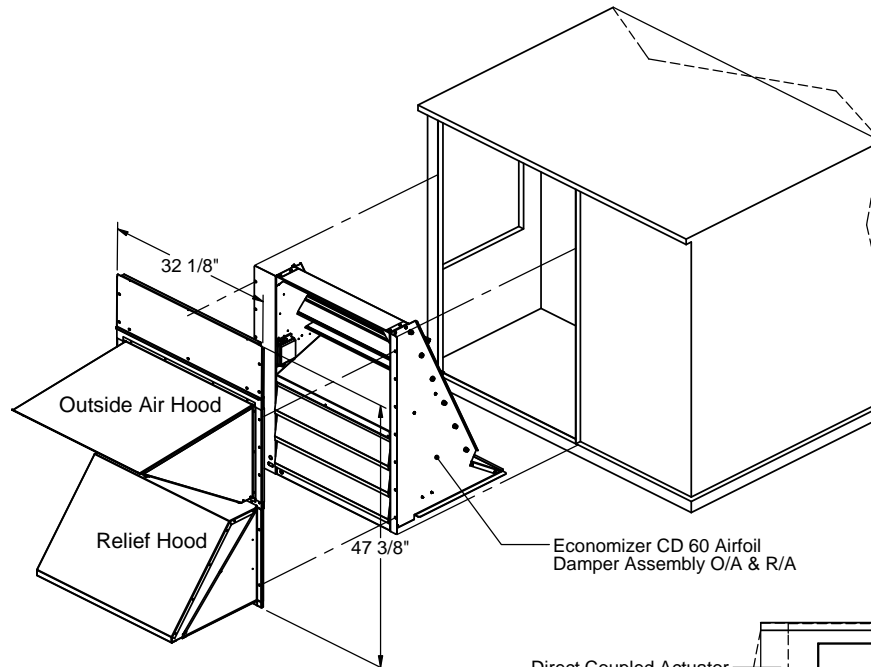
LEED ECONOMIZER OPTION

- ProVent P/N: FLOWECPRD3715
- Outside air measurement for dilution utilizing thermal dispersion technology and ASHRAE 62.1 2007 compliant. Provides LEED credit by supplying feedback on ventilation system performance ensuring that the ventilation system maintains design requirements.
- Factory installed onto economizer standard.
- Provides analog outputs for BMS, visual or audible alert, and generates an alarm when conditions vary by 10% or more of set point.



DOWN DISCHARGE ECONOMIZER WITH BAROMETRIC RELIEF FOR YORK UNITS

ZT/ZR/ZH/ZJ 037, 049, 061
ZF/ZH/ZJ/ZR/XP/DH/DM/DF/DR/BP 078-150: DJ 150



Only Ruskin Company Model CD-60 is AMCA Certified

PROVENT P/N

Wt.

ECODPRD3715DBJ
(Fully Modulating Dry Bulb)

ECODPRD3715ENJ
(Fully Modulating Enthalpy)

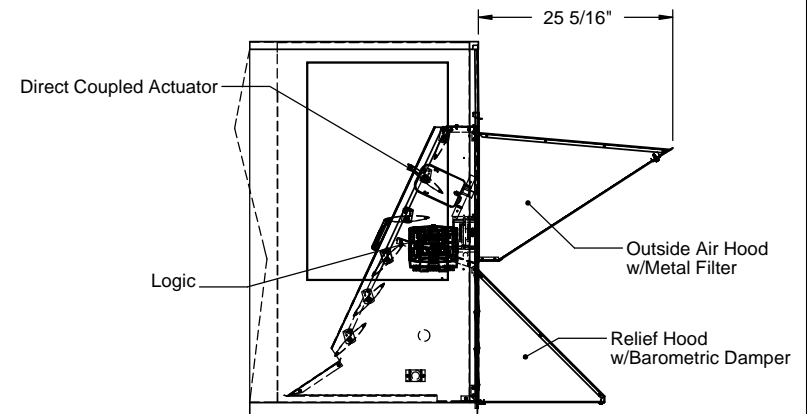
ECODPRD3715AC
(Actuator Only)

ECODPRD3715DBS
(SSE Controller Dry Bulb)

ECODPRD3715ENS
(SSE Controller Enthalpy)

90 Lb.

Note: For factory installed LEED economizer option, part number FLOWECPRD3715 must be added.



3847 WABASH DR.
MIRA LOMA, CA 91725

PHONE (951) 685-1101
FAX (619) 872-9799

SUBMITTED TO: _____
COMPANY: _____
JOB NAME: _____
EQUIPMENT: _____
NOTES: _____

FORM NO:

ECO-184

DATE:

6/22/2016

PART NUMBER:

ECODPRD3715 Series

REV:

11

DRAWN BY:

CNG