

**FEATURES**

- Roof curb perimeter made of 16 ga. galvanized steel.
- Gasketing package provided.
- Heat treated wood nailer provided.
- Corner flanges are pre-threaded for easy bolt on assembly.
- Pitched, adjustable pitch/adjustable height, welded, different height, isolation and calculated curbs are available.

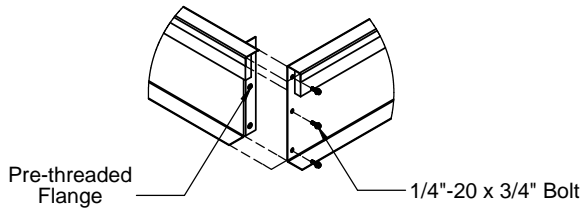
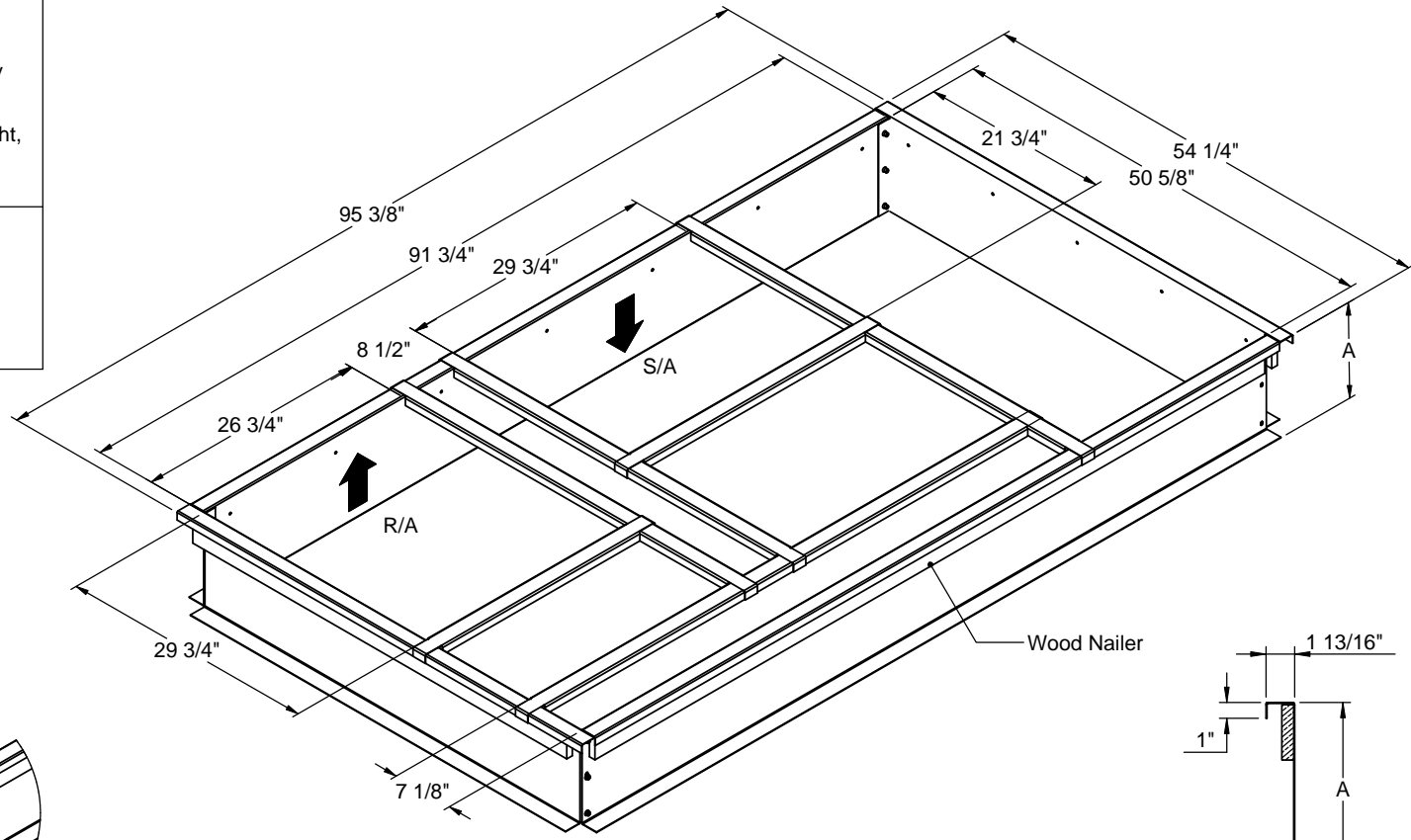
**NOTES**

- Attach ductwork to roof curb. Flanges of duct rest on top of the curb. Support ductwork below the curb.

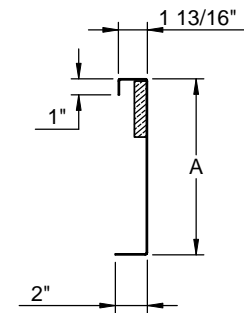
**KNOCK-DOWN ROOF CURBS FOR ALLIED UNITS**

LGH/LCH 092-120H, 150S; KGA/KCA/KHA 092-150S

PROVENT P/N	A	EST. WEIGHT
CBKDBBX08	8"	77 Lbs.
CBKDBBX11	11"	97 Lbs.
CBKDBBX14	14"	111 Lbs.
CBKDBBX24	24"	158 Lbs.



**CORNER DETAIL**



**CROSS SECTION DETAIL**



3847 WABASH DR.  
MIRA LOMA, CA 91725

PHONE (951) 685-1101  
FAX (619) 872-9799

SUBMITTED TO: \_\_\_\_\_  
 COMPANY: \_\_\_\_\_  
 JOB NAME: \_\_\_\_\_  
 EQUIPMENT: \_\_\_\_\_  
 NOTES: \_\_\_\_\_

FORM NO:  
CBKD-206

PART NUMBER:  
CBKDBBX Series

DATE:  
2/10/2014

REV:  
2

DRAWN BY:  
CNG