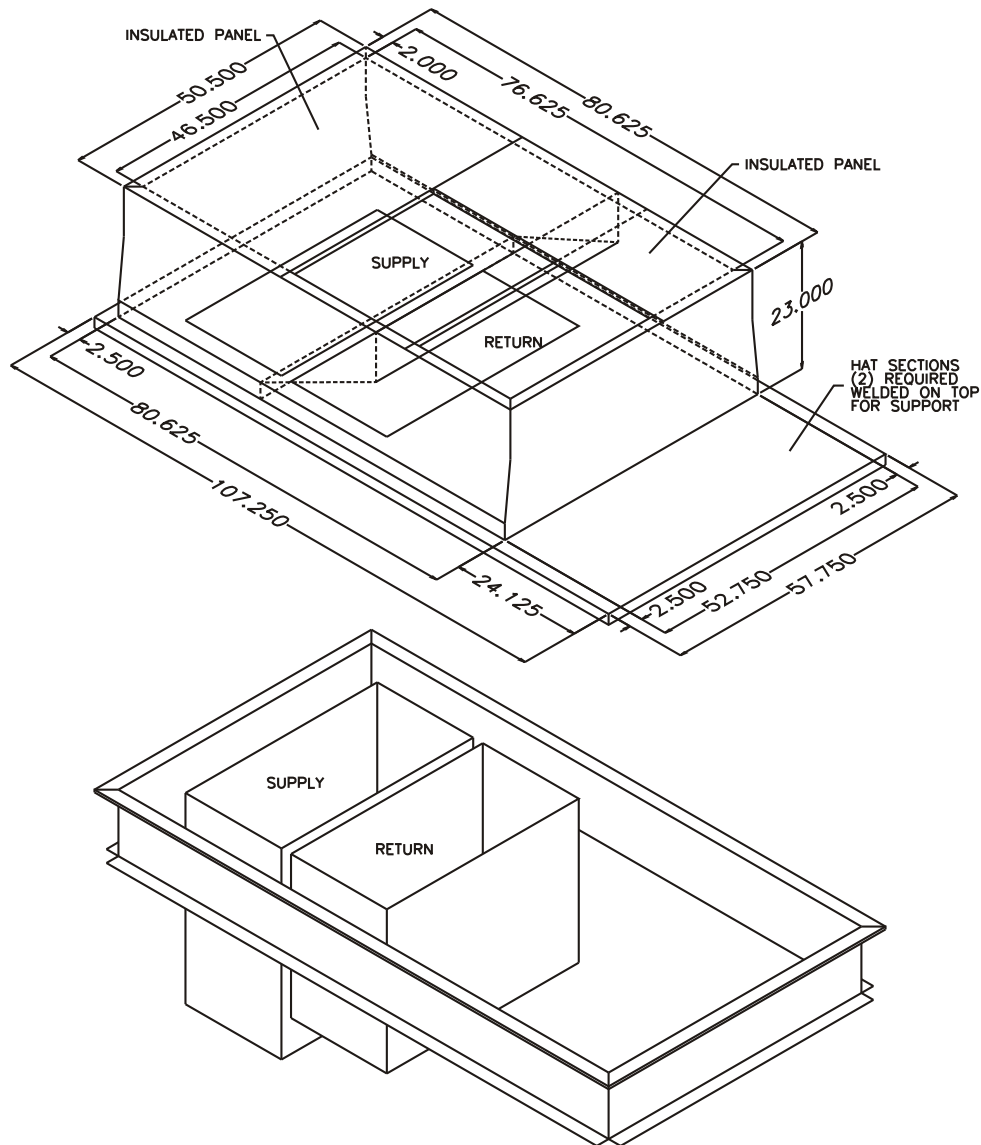




CURB ADAPTOR FOR YORK INTERNATIONAL
OLD UNIT: GCS3/CHA3/8 1353
NEW UNIT: ZJ/ZH 037, 049, 061, 078-150
ZR/ZF/XP/DM/DF/DH/BP 078-150 / DJ/DR 090-150

Notes:

1. Fully welded G90 galvanized construction.
2. Fully insulated.
3. Gaskets shipped with adaptor.
4. Separate supply and return ducts only.
(No concentrics - Consult factory.)
5. Adaptor matches existing duct.
6. Existing curb O.D. Is 1 inch less than bottom skirt of adapter.



RRS ADAPTOR MODEL	DUCT TYPE	EXISTING CURB DIMENSIONS	HEIGHT
80-290-2927PV	NON-CONCENTRIC	106.25 x 56.75	23"

FOR LIST PRICES: FORM# YKCALP29

JUNE 9, 2011 FORM# 290-2927P

