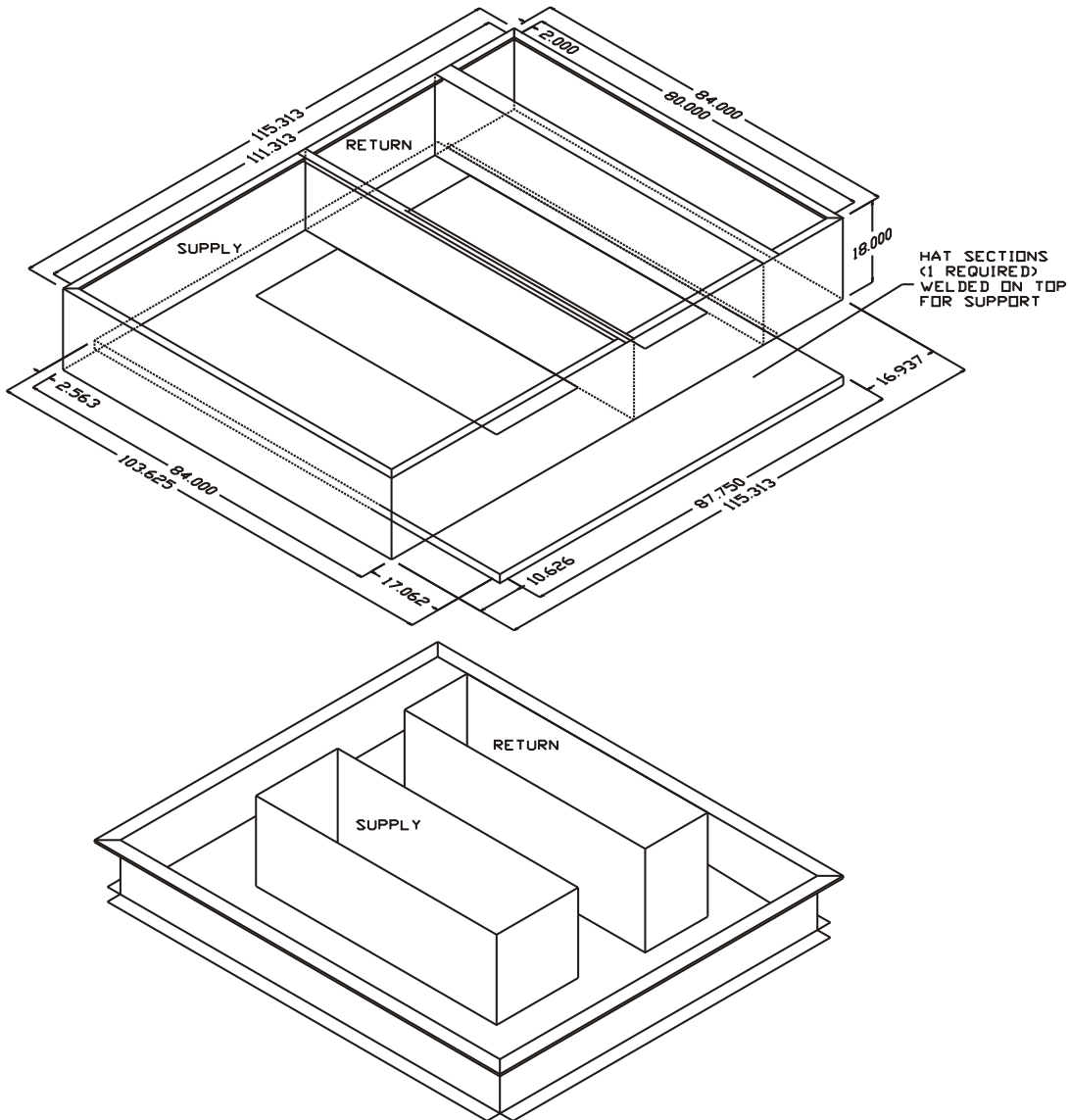




**CURB ADAPTOR FOR YORK INTERNATIONAL  
 OLD UNIT: LGA/LCA/LHA 180-240  
 NEW UNIT: DM/DH 180 / BP 180**

**Notes:**

1. Fully welded G90 galvanized construction.
2. Fully insulated.
3. Gaskets shipped with adaptor.
4. Separate supply and return ducts only.  
 (No concentrics - Consult factory.)
5. Adaptor matches existing duct.
6. Existing curb O.D. Is 1 inch less than bottom skirt of adapter.



RRS ADAPTOR MODEL	DUCT TYPE	EXISTING CURB DIMENSIONS	HEIGHT
80-290-1950PV	NON-CONCENTRIC	102.50 x 86.50	18"

FOR LIST PRICES: FORM#

MAY 25, 2011 FORM# 290-1950P

