

FEATURES

- Roof curb sides and ends are 16 ga. galvanized steel.
- Fully welded construction.
- Gasketing package provided.
- Heat treated wood nailer provided.
- Insulated deck pans provided.
- Pitched, different height, taller and calculated curbs are available.
- Restraints and springs have OSHPD Pre-Approval, OPA #0070.

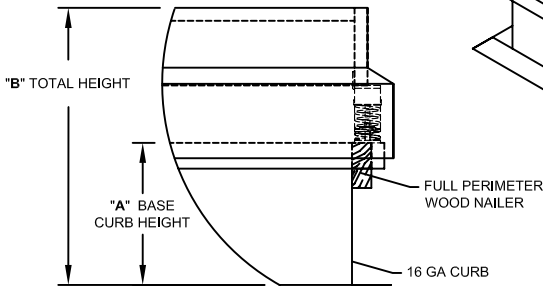
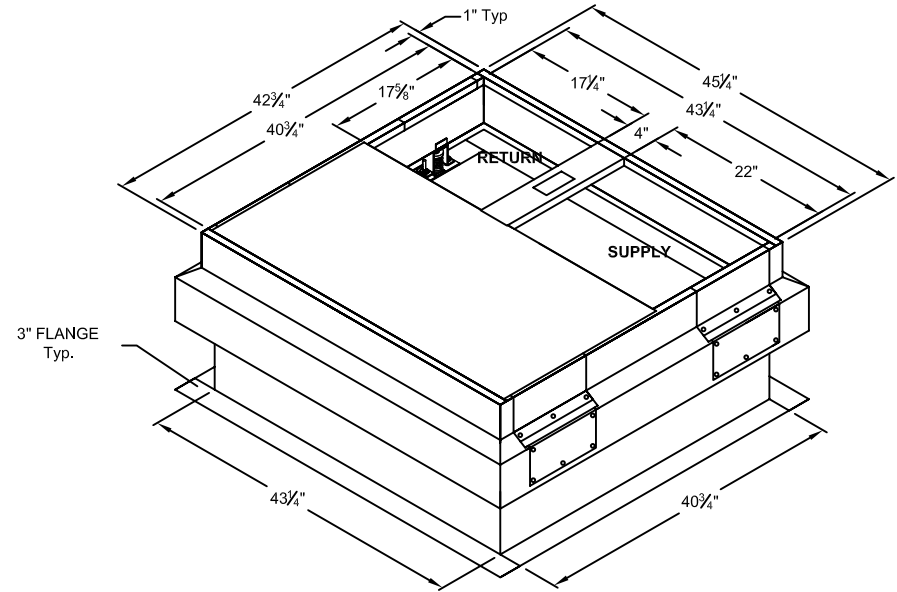
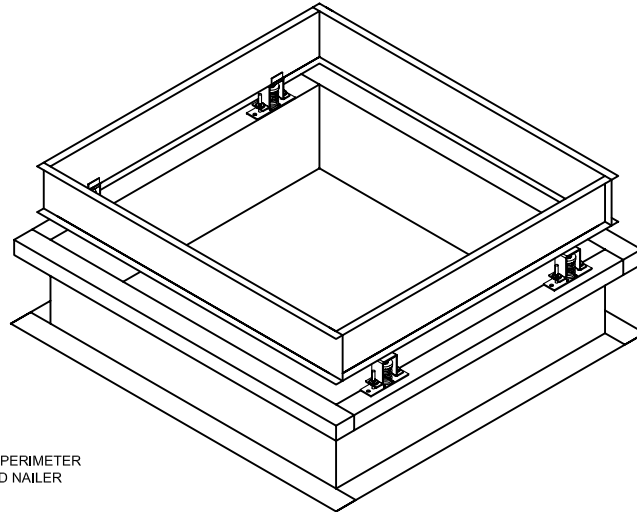
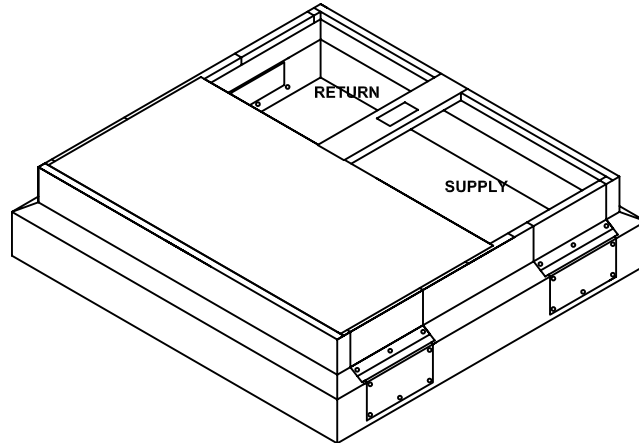
NOTES

- Attach ductwork to roof curb. Flanges of duct rest on top of curb. Support ductwork below the curb.
- Thru the curbs utilities are available. Contact your York distributor or Provent directly.

VIBRATION ISOLATION CURBS FOR YORK UNITS

DEB/BHH/BHA 018-060: DNZ/DEZ/DNP/DEM/BHZ/BHP 024-060: DEX 024-048: DNH/DEH 030-060: DNA 036-060: DNY/BHX 024, 036, 048, 060: DNX 024, 036, 048: DEY 060

ProVent P/N	A	B	WEIGHT
CBISAFF186018	8"	18"	210 Lbs
CBISAFF186021	11"	21"	220 Lbs
CBISAFF186024	14"	24"	230 Lbs



PROFILE DETAIL



1392 E. PALOMAR ST., # 403-234
 CHULA VISTA, CA 91913
 PHONE (619) 498-9246
 FAX (619) 498-9247

SUBMITTED TO: _____
 COMPANY: _____
 JOB NAME: _____
 EQUIPMENT: _____
 NOTES: _____

FORM NO:
 CBIS-101
 DATE:
 10/20/08

PART NUMBER:
 CBISAFF1860 SERIES
 DRAWN BY:
 CILB