

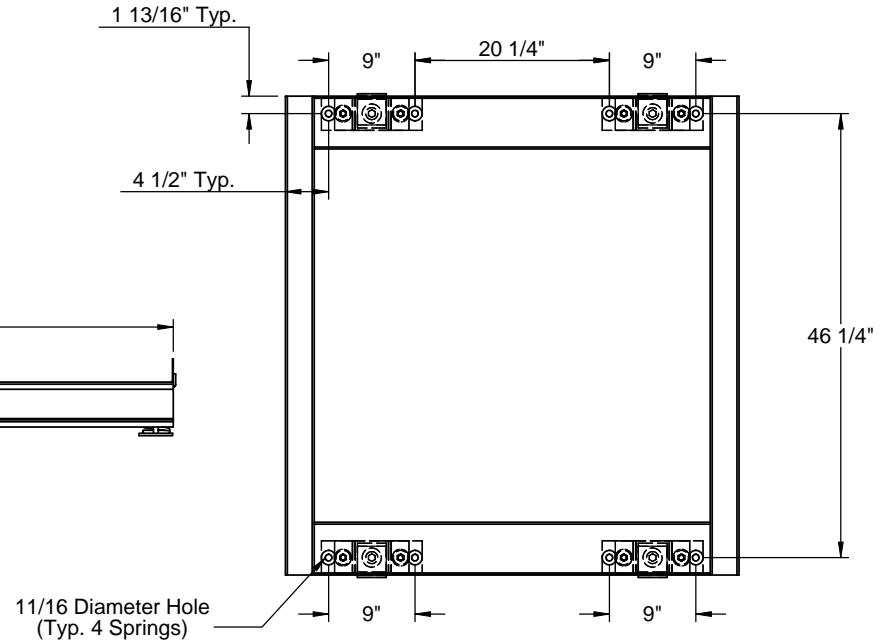
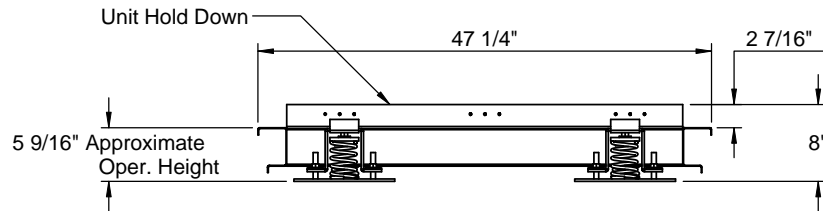
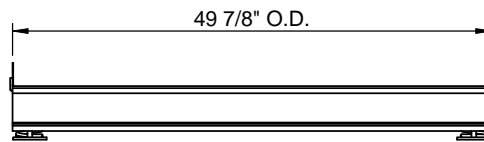
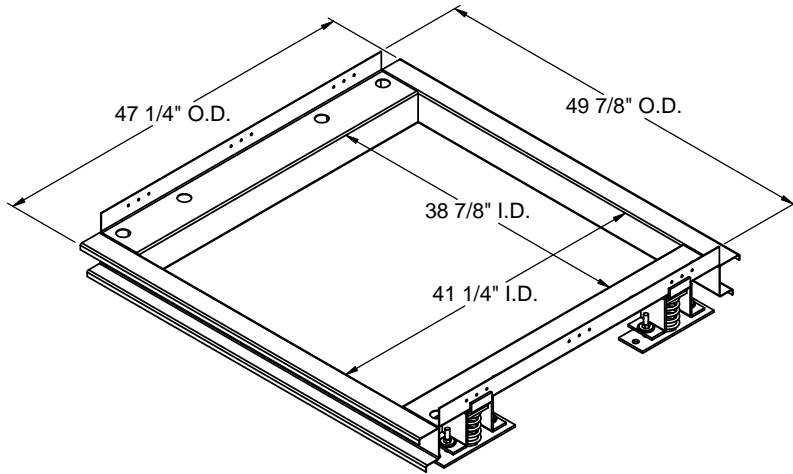
FEATURES

- Fully welded construction.
- 14 Ga. galvanized support frame.
- Estimated weight - 97 Lbs.
- Gasketing package provided.
- Restraints and springs have OSHPD pre-approval, OPA #0070.

VIBRATION ISOLATION FRAME FOR HORIZONTAL YORK UNITS - LOW PROFILE

DEB, BHH, BHA 018-060; DEX 024-048
 DNZ, DEZ, DNP, DEM, BHZ, BHP 024-060
 DNH, DEH 030-060; DNX 024, 036, 048; DEY 060
 DNA 036-060; DNY, BHX 024, 036, 048, 060

Unit Model	Power Exhaust?	Provent P/N
DNZ, DNQ 024-030 BHZ, BHQ, BHX 024-036 DEZ, DEQ, DEX 024-048 DEZ, DEQ, DEY 060	NO	CBISHAFF18601
DNZ, DNQ 036-060; DNX 024-048 BHZ, BHQ 042-060; BHX 048-060	NO	CBISHAFF18602
DNZ, DNQ 024-030 BHZ, BHQ, BHX 024-036 DEZ, DEQ, DEX 024-048 DEZ, DEQ, DEY 060	YES	CBISHAFF1860P1
DNZ, DNQ 036-060; DNX 024-048 BHZ, BHQ 042-060; BHX 048-060	YES	CBISHAFF1860P2



Anchorage Location Detail



3847 WABASH DRIVE
 MIRA LOMA, CA 91752

PHONE (951) 685-1101
 FAX (619) 872-9799

SUBMITTED TO: _____
 COMPANY: _____
 JOB NAME: _____
 EQUIPMENT: _____
 NOTES: _____

FORM NO:
 CBISH-109

PART NUMBER:
 CBISHAFF1860 - SERIES

DATE:
 10/18/2012

REV:
 2

DRAWN BY:
 CNG