

For wood, concrete and steel attachment see Roof Anchorage Detail, Form No. CB-62.

Welded isolation springs housing are standard. For bolted spring housing, neoprene pads and spring cups see Weldment and Bolting Detail, Form No. CB-61

**FEATURES**

- Roof curb base 12 ga.
- Roof curb upper rail 14 ga.
- Fully welded construction.
- Gasketing package provided.
- Heat treated wood nailer provided.
- insulated deck pans provided.
- Pitched curbs and taller curbs are available.

**NOTES**

- Attach ductwork to roof curb. Flanges of duct rest on top of the curb, Support ductwork below the curb.
- Thru the curb utilities are available. Contact you York distributor or Provent directly.

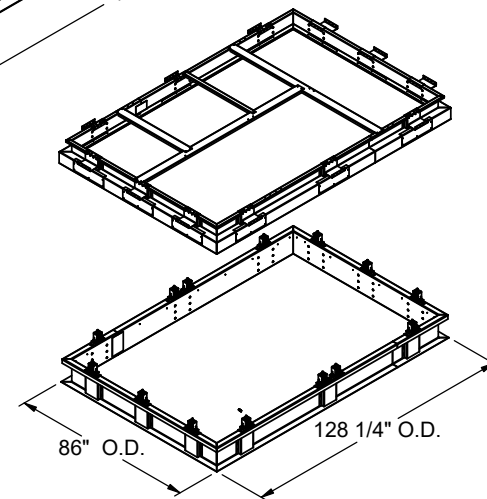
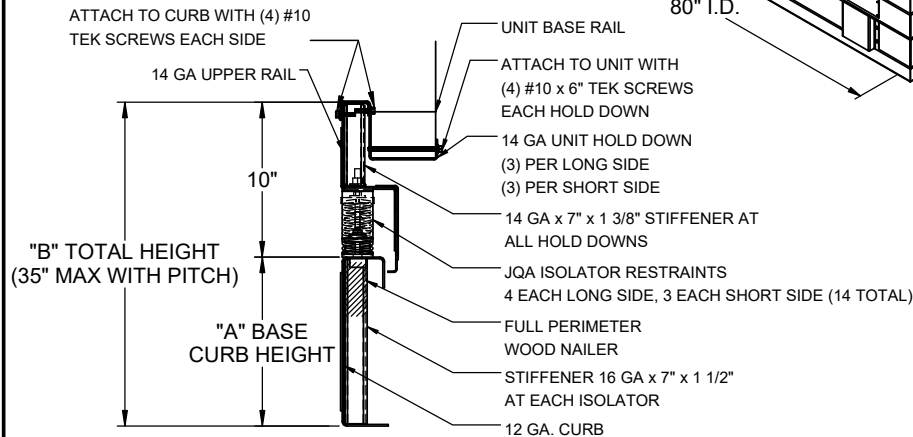
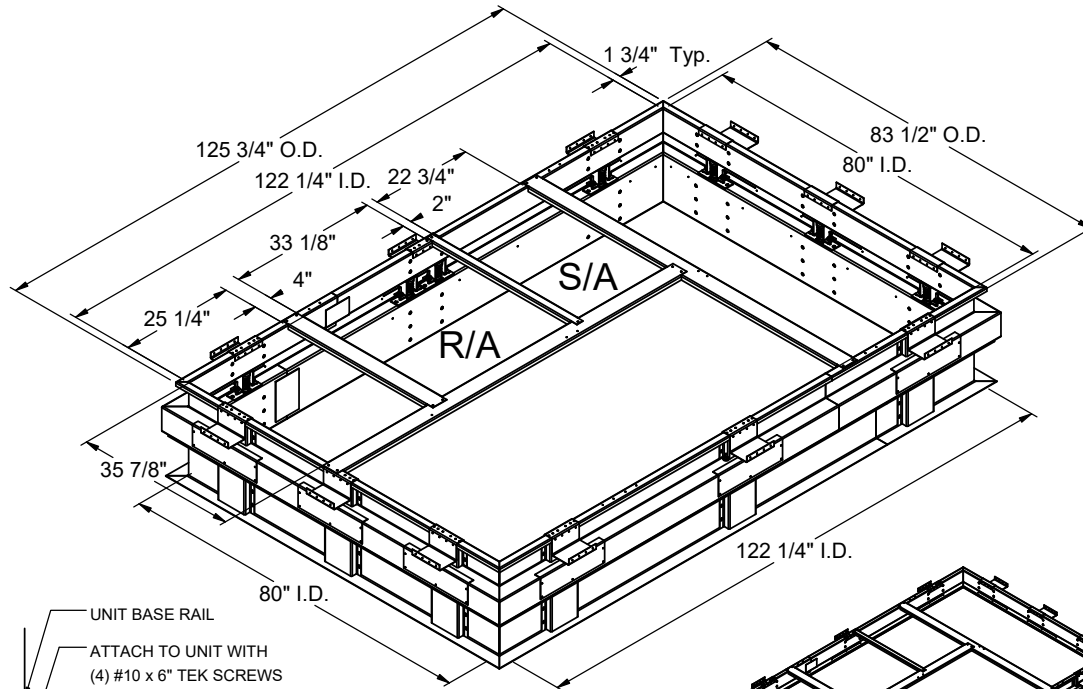
**VIBRATION ISOLATION ROOF CURBS  
YORK UNITS**

ZJ, ZR 180-300; XP 180-240  
ZF 210-300; ZT 180-276

PROVENT P/N	A	B	EST. WEIGHT
CBISCSLM183018**	8"	18"	556 Lbs
CBISCSLM183021**	11"	21"	606 Lbs
CBISCSLM183024**	14"	24"	656 Lbs

\*\*Note: Spring configuration must be added to part number at time of order

Meets seismic requirements for the following codes:  
CBC 2019  
IBC 2018



3847 WABASH DRIVE  
MIRA LOMA, CA 91752  
  
PHONE (951) 685-1101  
FAX (619) 872-9799

SUBMITTED TO: \_\_\_\_\_  
COMPANY: \_\_\_\_\_  
JOB NAME: \_\_\_\_\_  
EQUIPMENT: \_\_\_\_\_  
NOTES: \_\_\_\_\_

FORM NO:  
CBISC-08  
  
DATE:  
4/2/2021

PART NUMBER:  
-  
  
REV:  
2  
  
DRAWN BY:  
ALL