

**FEATURES**

- Roof curb perimeter made of 16 ga. galvanized steel.
- Gasketing package provided.
- Heat treated wood nailer provided.
- Corner flanges are pre-threaded for easy bolt on assembly.
- Insulated deck pans provided.
- Pitched, adjustable pitch/adjustable height, welded, different height, isolation and calculated curbs are available.

**NOTES**

- Attach ductwork to roof curb. Flanges of duct rest on top of curb. Support ductwork below the curb.
- Thru the curbs utilities are available. Contact your York distributor or Provent directly.

**KNOCK-DOWN ROOF CURBS FOR YORK UNITS**

**ZH/ZJ 037, 049, 061**  
**ZF/ZH/ZJ/ZR/XP/DH/DM/DF/DR/BP 078-150: DJ 150**

**ProVent P/N**

- CBKDPRD371508
- CBKDPRD371511
- CBKDPRD371514
- CBKDPRD371524

**A**

- 8"
- 11"
- 14"
- 24"

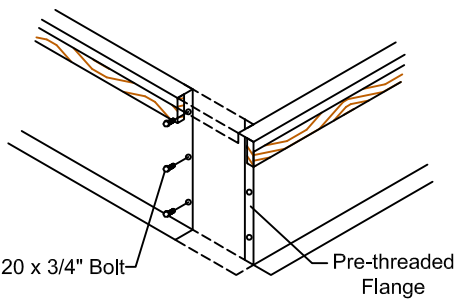
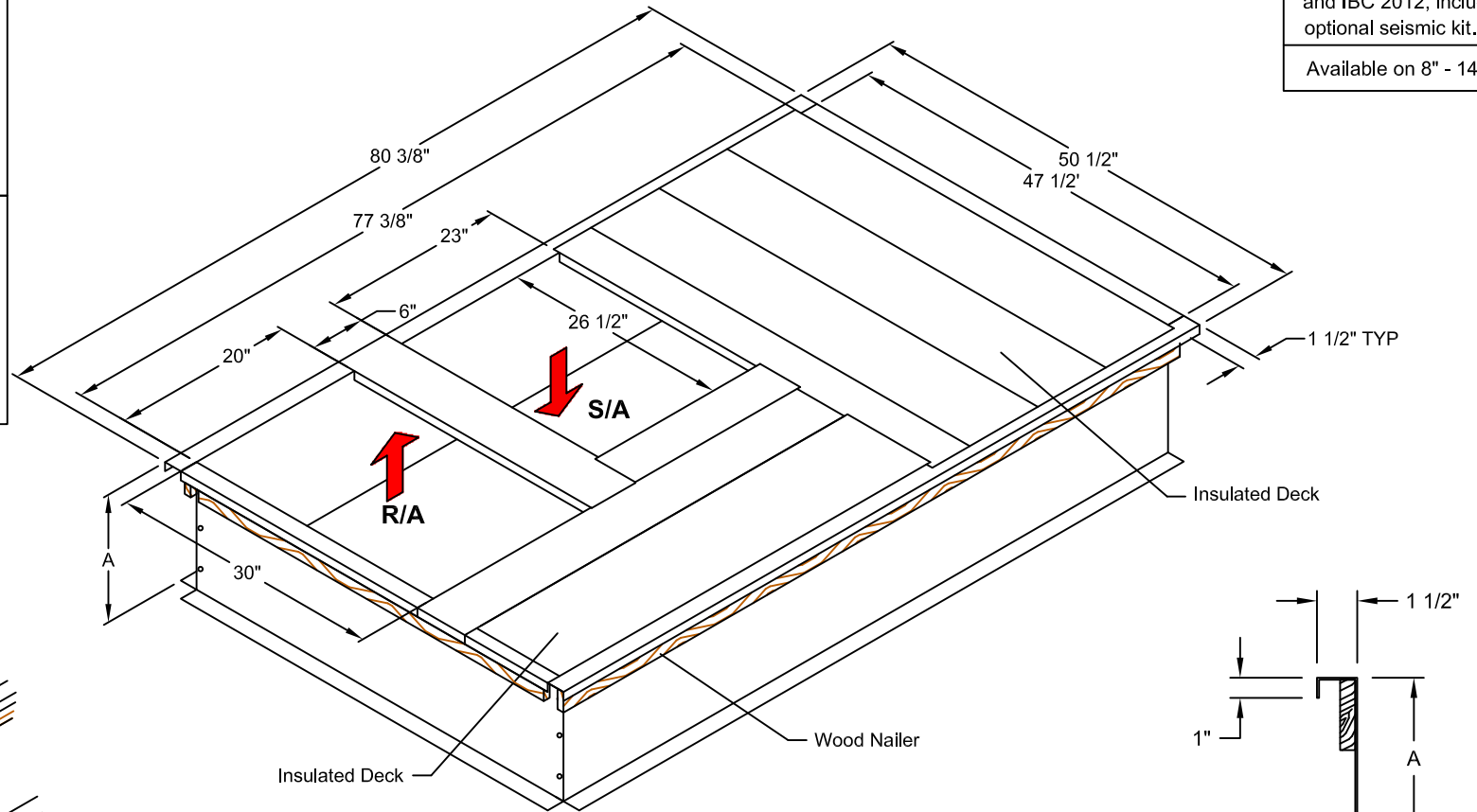
**WEIGHT**

- 115 Lbs
- 129 Lbs
- 144 Lbs
- 192 Lbs

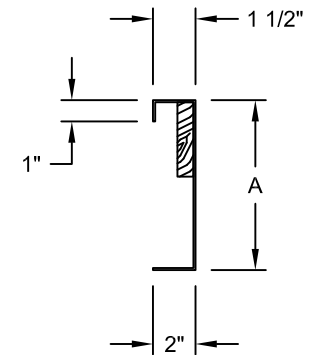
**SEISMIC KIT P/N**

- KDKITPRD3715

When conforming to CBC 2013 and IBC 2012, include optional seismic kit.  
 Available on 8" - 14".



**CORNER DETAIL**



**CROSS SECTION DETAIL**



3847 WABASH DRIVE  
 MIRA LOMA, CA 91752  
 PHONE (951) 685-1101  
 FAX (619) 498-9247

SUBMITTED TO: \_\_\_\_\_  
 COMPANY: \_\_\_\_\_  
 JOB NAME: \_\_\_\_\_  
 EQUIPMENT: \_\_\_\_\_  
 NOTES: \_\_\_\_\_

FORM NO:  
 CBKD-114

DATE:  
 10/6/14

REV:  
 2

PART NUMBER:  
 CBKDPRD3715 SERIES

DRAWN BY:  
 CNG