

For wood, concrete and steel attachments see Roof Anchorage Detail, Form No. CB-60

STRUCTURALLY CALCULATED HOLD DOWN CLIPS FOR KNOCK-DOWN ROOF CURBS FOR YORK UNITS

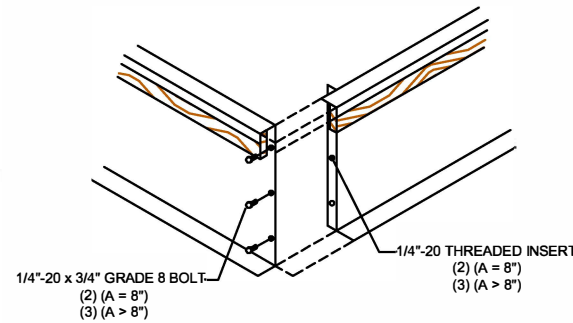
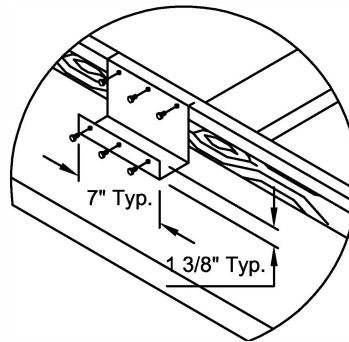
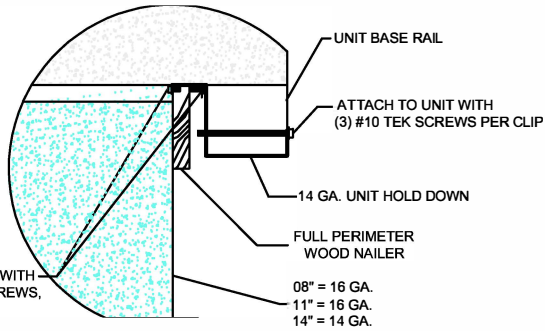
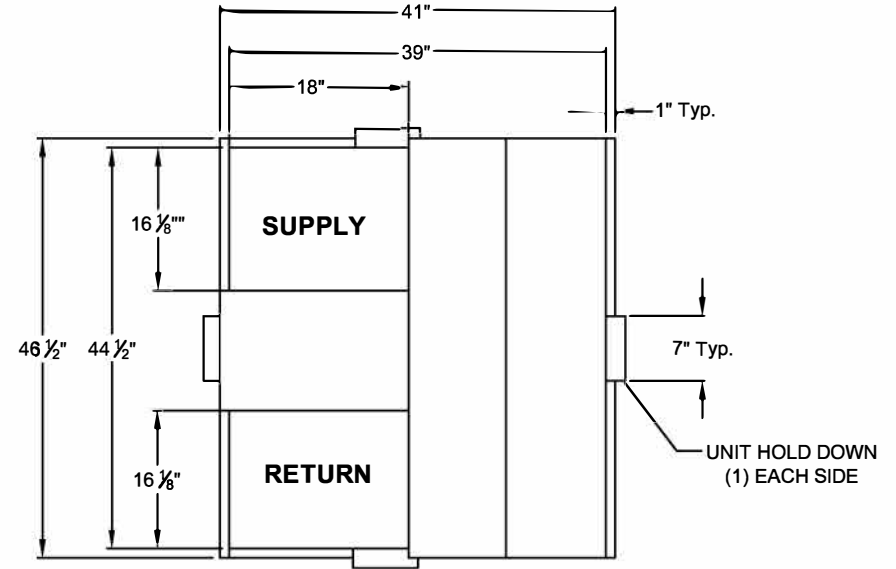
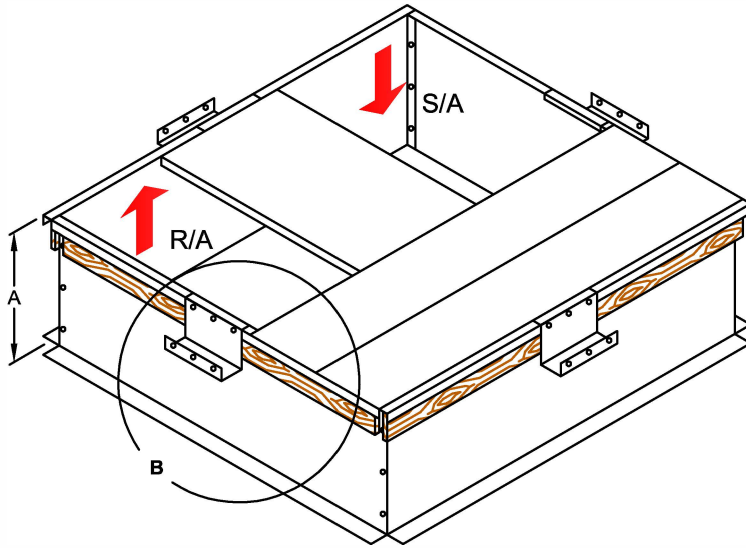
ProVent P/N	A	WEIGHT
CBKDLXL08	8"	53 Lbs
CBKDLXL11	11"	64 Lbs
CBKDLXL14	14"	75 Lbs

SEISMIC KIT P/N	WEIGHT
KDKITLX	5 Lbs

Will conform to seismic code requirements for knock-down or pre-assembled application. (Contact factory for assembled version.)

P*B ALL MODELS**

Meets seismic requirements for the following codes:
CBC 2019
IBC 2018



3847 WABASH DRIVE
 MIRA LOMA, CA 91725
 PHONE (951) 685-1101
 FAX (619) 872-9799

SUBMITTED TO: _____
 COMPANY: _____
 JOB NAME: _____
 EQUIPMENT: _____
 NOTES: _____

FORM NO:
 CBKD-153

DATE:
 3/26/2021

REV:
 7

PART NUMBER:
 KDKITLX

DRAWN BY:
 ALL