

For wood, concrete and steel attachments see Roof Anchorage Detail, Form No. CB-25A.

Will conform to wind load code requirements for knock-down or pre-assembled application. (Contact factory for assembled version.)

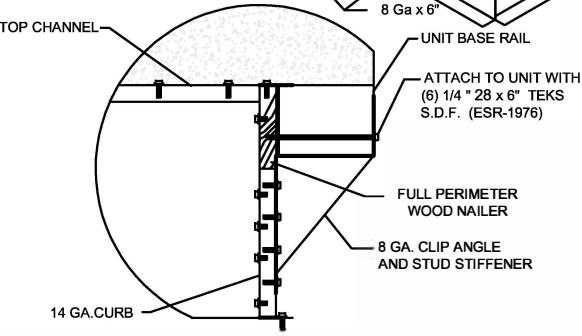
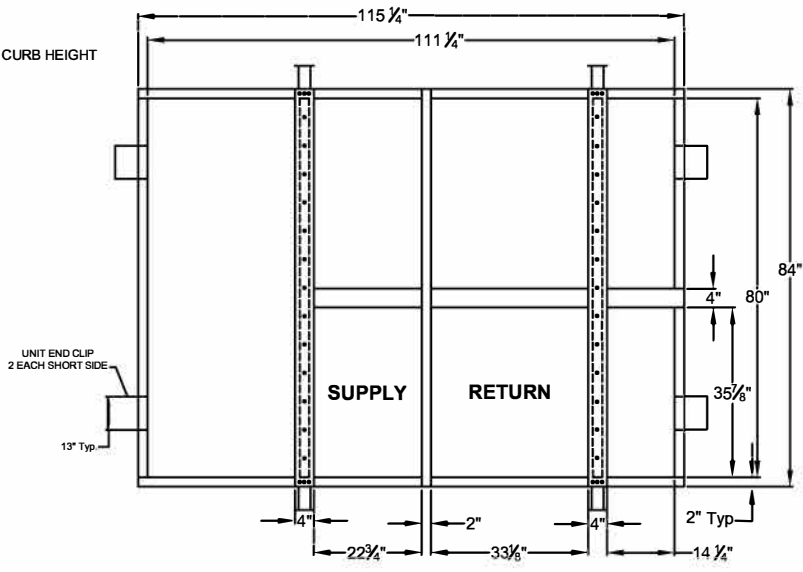
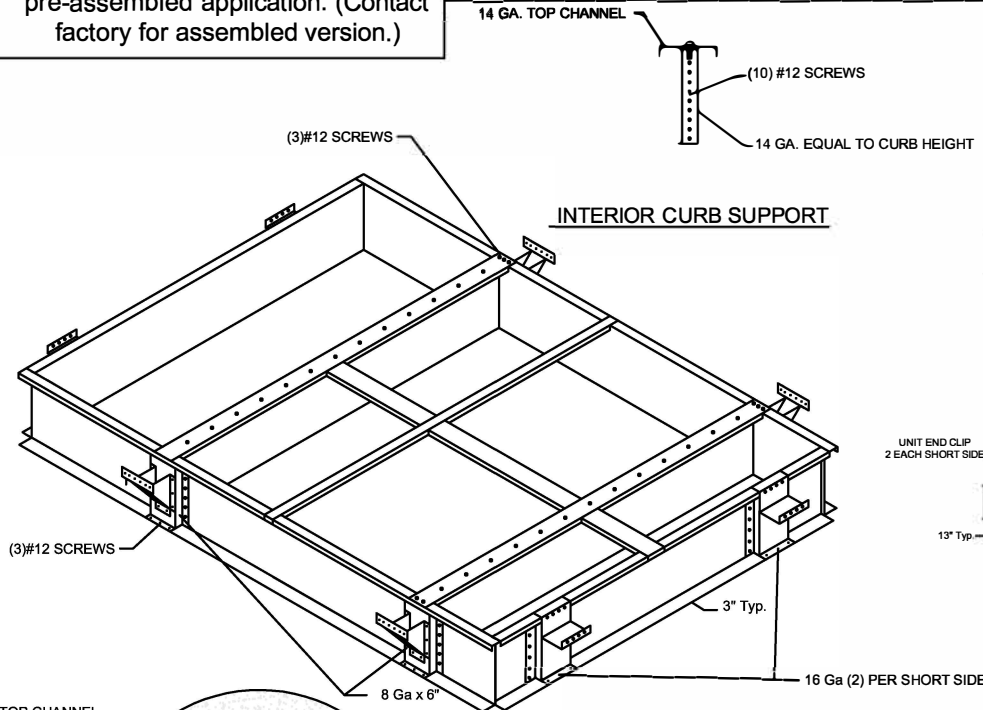
**CALCULATED WIND ROOF CURBS FOR YORK UNITS
SERIES 20/ LARGE SUNLINE- SHORT RAIL**

ZF 180

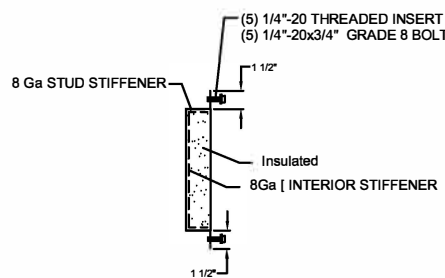
ProVent P/N	A	WEIGHT
80-265-1914	14"	328 Lbs
80-265-1918	18"	426 Lbs

Meets wind requirements for the following codes:
FBC 2020
based on ASCE 7-16.

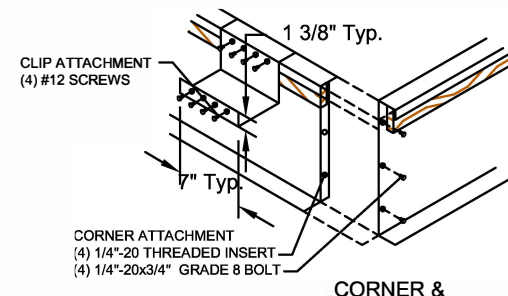
Wind:
190 mph exposure D category III or IV building, max BLDG height: 60 ft
Kzt=1.00 max



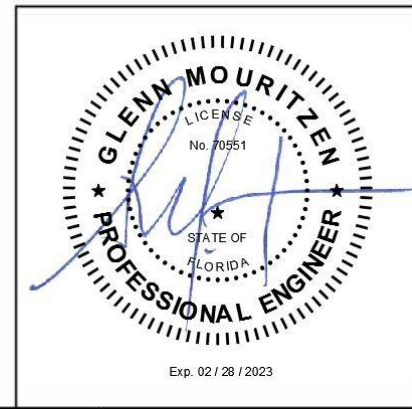
HOLD DOWN DETAIL



STUD STIFFENER



CORNER & END CLIP DETAIL



Exp. 02 / 28 / 2023



1625 DIPLOMAT DRIVE
CARROLTON, TX 75006

PHONE (972) 247-7447
FAX (972) 243-0940

SUBMITTED TO: _____
COMPANY: _____
JOB NAME: _____
EQUIPMENT: _____
NOTES: _____

FORM NO:
CBKD-92A

DATE:
3/29/2021

REV:
1

PART NUMBER:
80-265-19

DRAWN BY:
ALL