

For wood, concrete and steel attachments see Roof Anchorage Detail, Form No. CB-60.

STRUCTURALLY CALCULATED WELDED ROOF CURBS FOR YORK UNITS

**ZJ, ZR 180-300; XP 180-240
ZF 210-300; ZT 180-276**

ProVent P/N	A	WEIGHT
CBWCSLM183008	8"	159 Lbs
CBWCSLM183011	11"	185 Lbs
CBWCSLM183014	14"	211 Lbs
CBWCSLM183024	24"	370 Lbs

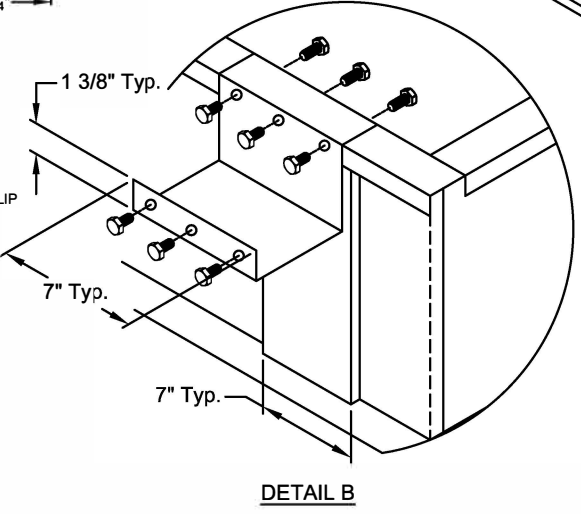
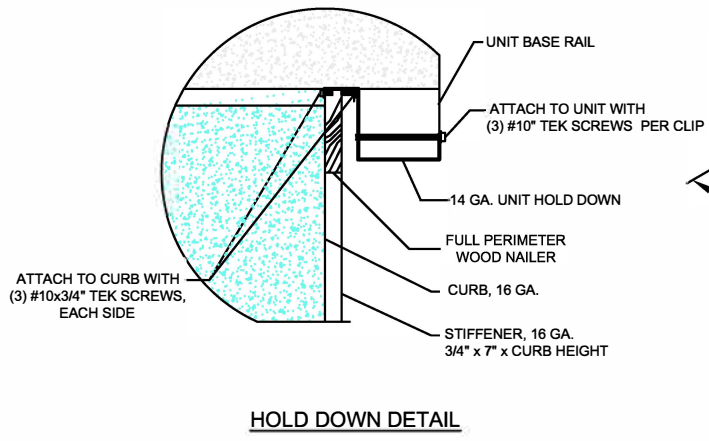
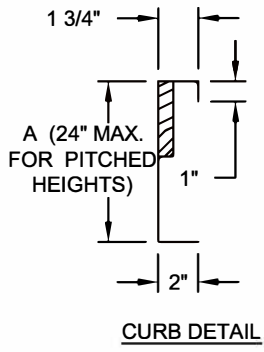
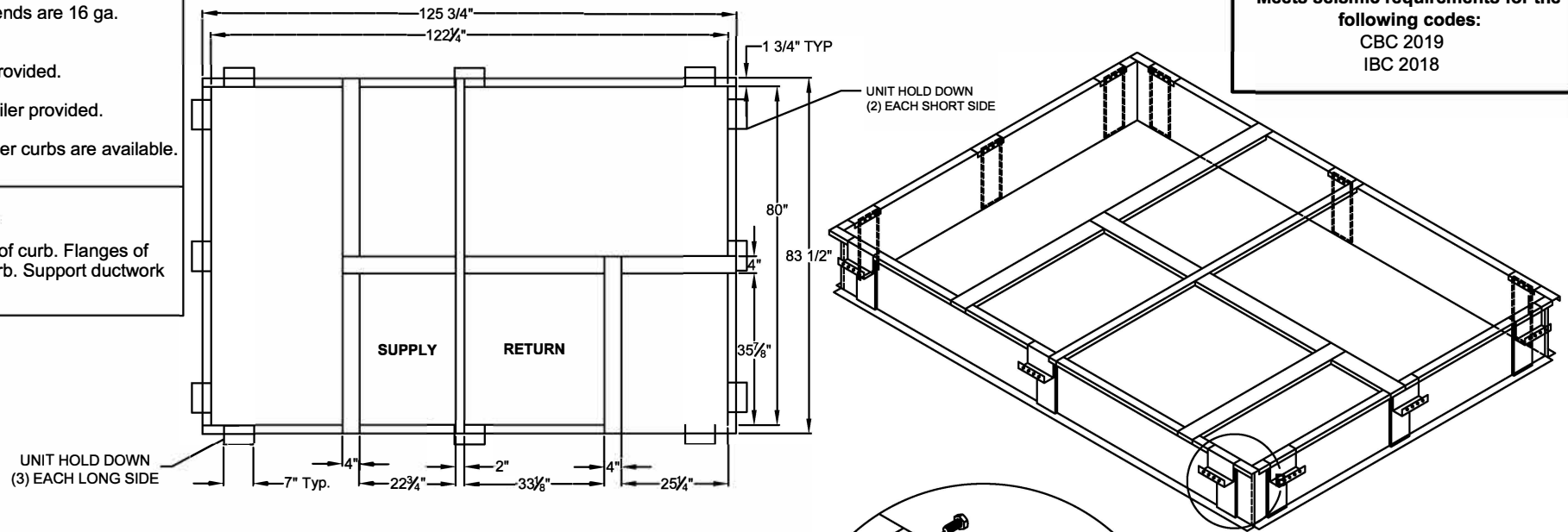
Meets seismic requirements for the following codes:
CBC 2019
IBC 2018

FEATURES

- Roof curb sides and ends are 16 ga. galvanized steel.
- Gasketing package provided.
- Heat treated wood nailer provided.
- Pitched curbs and taller curbs are available.

NOTES

- Attach ductwork to roof curb. Flanges of duct rest on top of curb. Support ductwork below the curb.



3847 WABASH DRIVE
MIRA LOMA, CA 91725

PHONE (951) 685-1101
FAX (619) 872-9799

SUBMITTED TO: _____
COMPANY: _____
JOB NAME: _____
EQUIPMENT: _____
NOTES: _____

FORM NO: CBWC-115

DATE: 9/9/2021
REV: 8

PART NUMBER: CBWCSLM1830 SERIES

DRAWN BY: ALL