

For wood, concrete, and steel attachments, see Roof Anchorage Detail Forms CB-27, CB28

Welded isolation spring housings are standard. For bolted spring housings, neoprene pads, and spring cups, see Weldment and Bolting Detail, Form No ISCAL-135

STRUCTURALLY CALCULATED VIBRATION ISOLATION ROOF CURB FOR YORK UNITS

ZX, ZY 04-06; ZX 07

PROVENT P/N	A	B	WEIGHT
ISCALPRS18**	8"	18"	276 Lbs.
ISCALPRS21**	11"	21"	287 Lbs.
ISCALPRS24**	14"	24"	299 Lbs.

**Note: Spring configuration must be added to part number at time of order.

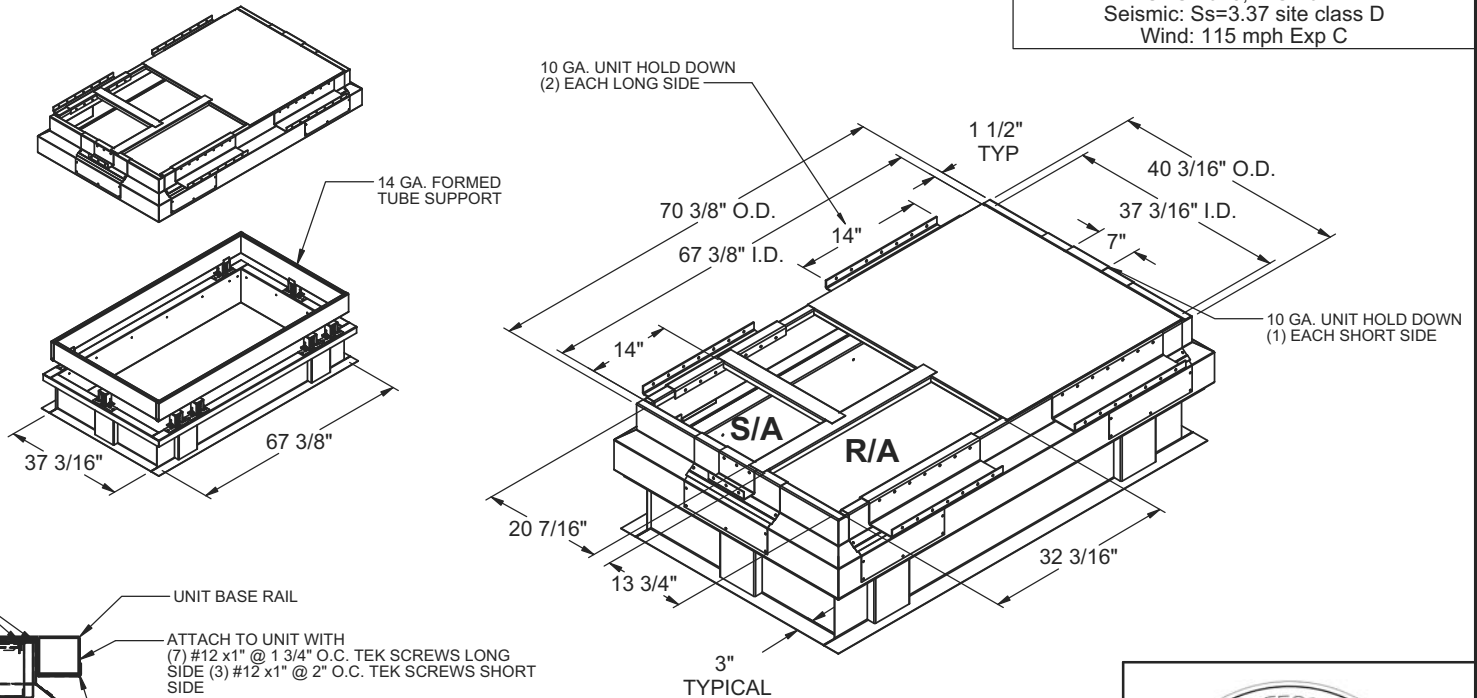
Meet seismic requirements for the following codes:
 CBC 2013, IBC 2012
 Seismic: Ss=3.37 site class D
 Wind: 115 mph Exp C

FEATURES:

- Roof curb sides and ends are 16 ga. galvanized steel.
- Fully welded construction.
- Gasketing package provided.
- Heat treated wood nailer provided.
- Insulated deck pan provided.
- Pitched curbs and taller curbs are available.
- CalDyn OSHPD pre-approved 2" deflection seismic restraints. (OPA-0070) JQA.

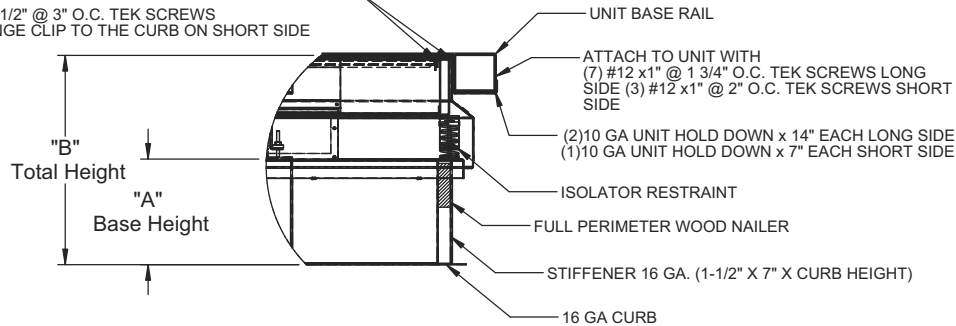
NOTES

Attach ductwork to roof curb. Flanges of duct rest on top of curb. Support ductwork below the curb.



ATTACH TO CURB WITH
 (7) #12 x 1/2" @ 3" O.C. TEK SCREWS
 EA FLANGE CLIP TO THE CURB ON LONG SIDE

(3) #10 x 1/2" @ 3" O.C. TEK SCREWS
 EA FLANGE CLIP TO THE CURB ON SHORT SIDE



SIDE VIEW DETAIL



3847 WABASH DR.
 MIRA LOMA, CA 91752

PHONE (951) 685-1101
 FAX (619) 872-9799

JOB NAME: _____
 ADDRESS: _____

 NOTES: _____

FORM NO:
 ISCAL-133

DATE:
 12/16/2014

PART NUMBER:
 ISCALPRS SERIES

REV:
 5

DRAWN BY:
 JG