

For wood, concrete and steel attachments see Roof Anchorage Detail, Form No. CB-24A.

Welded isolation spring housings are standard. For bolted spring housings, neoprene pads and spring cups see Weldment and Bolting Detail, Form No. ISCAL-131.

**FEATURES**

- Roof curb sides and ends are 14 ga. galvanized steel.
- Fully welded construction.
- Gasketing package provided.
- Heat treated wood nailer provided.
- Insulated deck pans provided.
- Pitched curbs and taller curbs are available.
- CalDyn OSHPD pre-approved 2" or 3" deflection seismic restraints. (OPA-0070), (JQBX).
- Optional bottom bumper CalDyn #KT-382B, with a 1/2" washer and nut installed on seismic restraints.

**NOTES**

- Attach ductwork to roof curb. Flanges of duct rest on top of curb. Support ductwork below the curb.

**STRUCTURALLY CALCULATED VIBRATION ISOLATION CURBS FOR YORK UNITS**

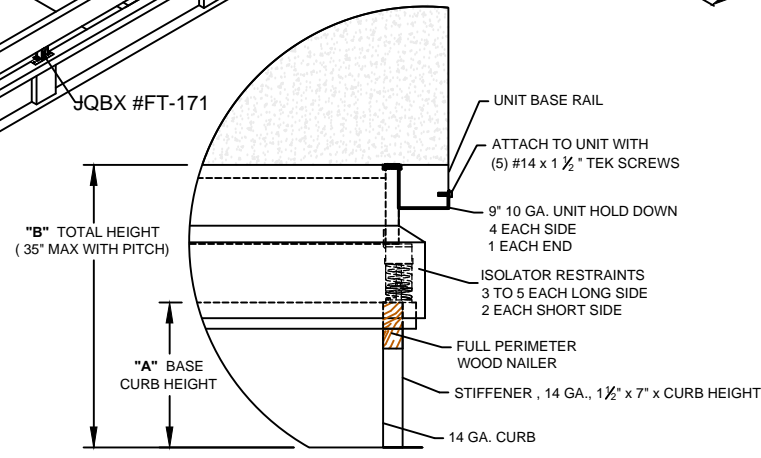
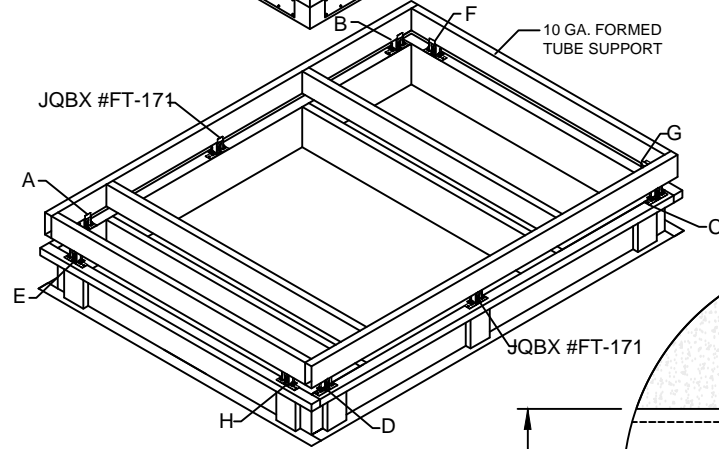
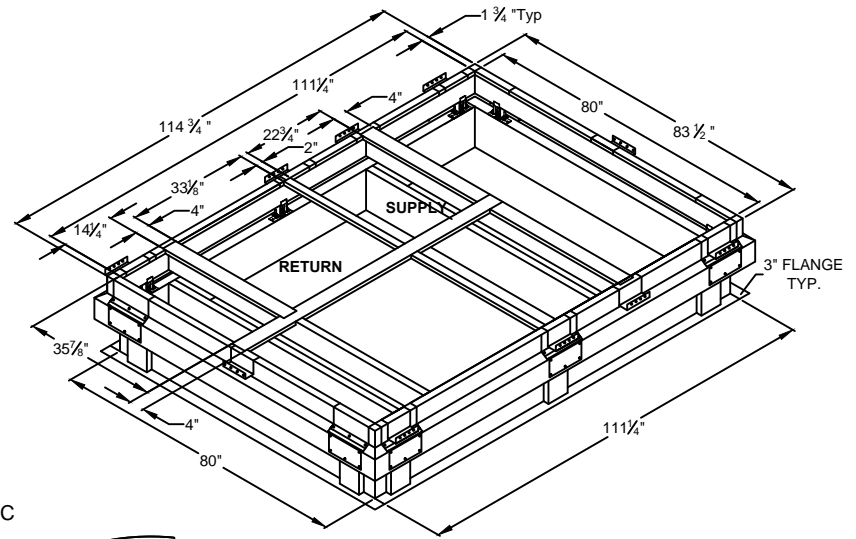
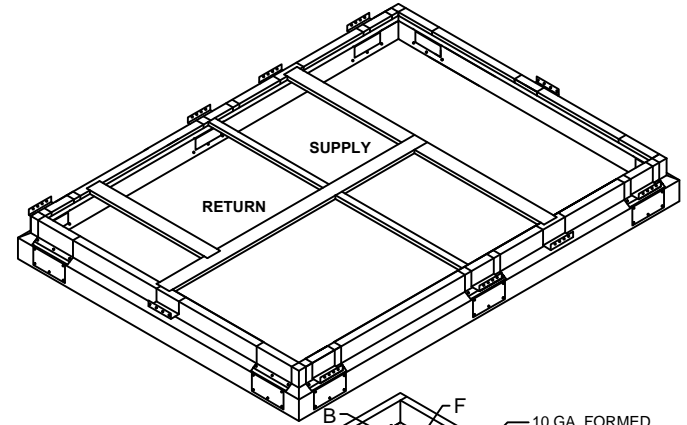
**ZF 180**

ProVent P/N (2" Deflection)	A	B	WEIGHT
ISCALSLU18019**	8"	19"	779 Lbs
ISCALSLU18022**	11"	22"	808 Lbs
ISCALSLU18025**	14"	25"	837 Lbs

ProVent P/N (3" Deflection)	A	B	WEIGHT
ISCALSLU180193**	8"	19"	779 Lbs
ISCALSLU180223**	11"	22"	808 Lbs
ISCALSLU180253**	14"	25"	837 Lbs

**\*\*Note:** Spring configuration must be added to part number at time of order.

**Meets seismic requirements for the following codes:**  
CBC 2013  
IBC 2012



**PROFILE DETAIL**



CORNER	ZF 180	WITH PE ZF 180
A	453	348-171
B	453	348-171
C	348-171	348-171
D	348-171	348-171
E	348	348
F	348	348
G	348	348
H	348	348



3847 WABASH DR.  
MIRA LOMA, CA 91725  
  
PHONE (951) 685-1101  
FAX (619) 872-9247

SUBMITTED TO: \_\_\_\_\_  
COMPANY: \_\_\_\_\_  
JOB NAME: \_\_\_\_\_  
EQUIPMENT: \_\_\_\_\_  
NOTES: \_\_\_\_\_

FORM NO:  
ISCAL-128  
  
DATE:  
7/22/14

PART NUMBER:  
ISCALSLU180 SERIES  
  
DRAWN BY:  
JG