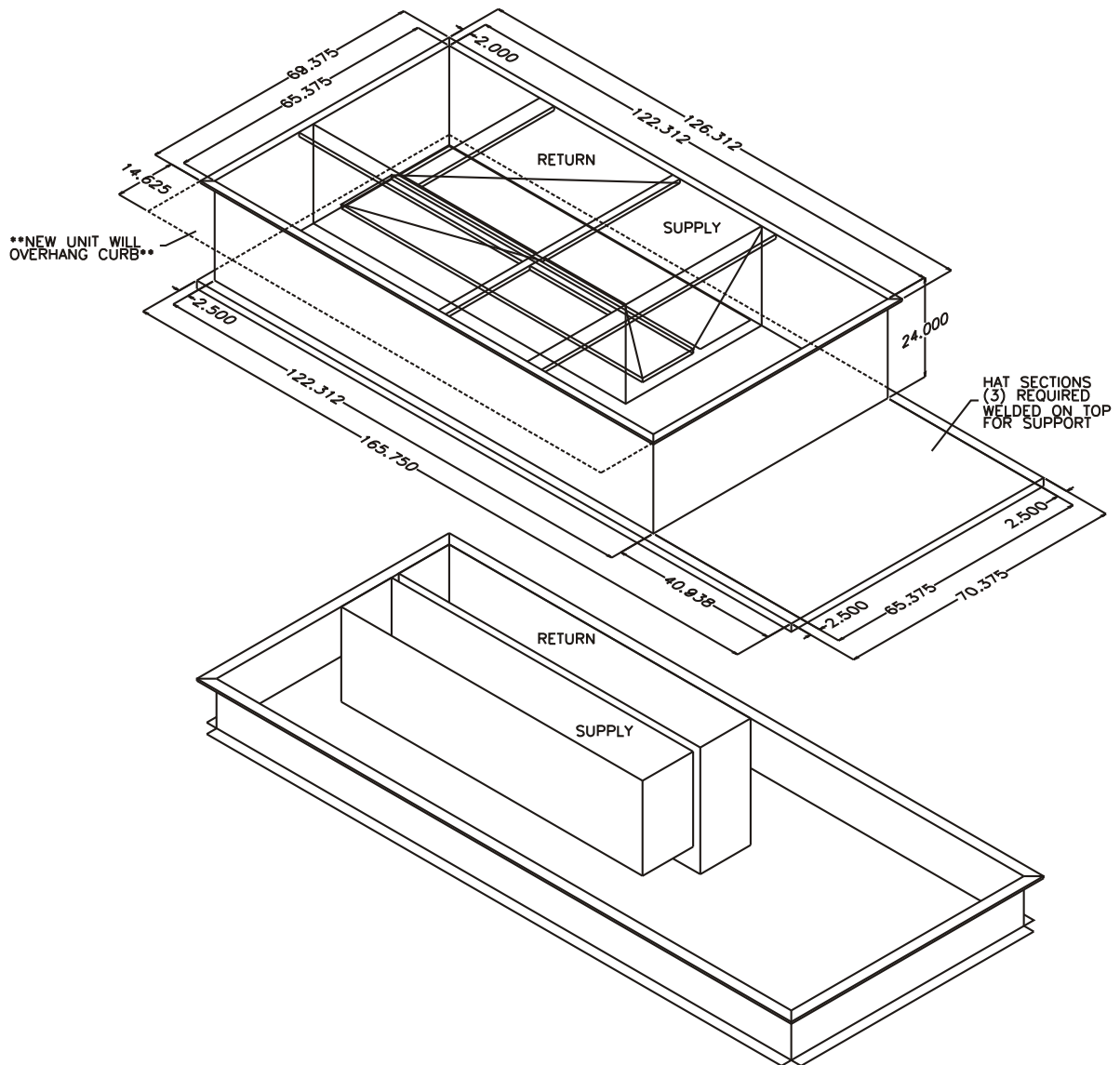




CURB ADAPTOR FOR YORK INTERNATIONAL
OLD UNIT: 559/579/599C 300-360
NEW UNIT: DM/DH 240-300 / DJ/DR 180-300
BQ/BP 240

Notes:

1. Fully welded G90 galvanized construction.
2. Fully insulated.
3. Gaskets shipped with adaptor.
4. Separate supply and return ducts only.
(No concentrics - Consult factory.)
5. Adaptor matches existing duct.
6. Existing curb O.D. Is 1 inch less than bottom skirt of adapter.



RRS ADAPTOR MODEL	DUCT TYPE	EXISTING CURB DIMENSIONS	HEIGHT
80-290-1812PV	NON-CONCENTRIC	164.750 x 69.375	24"

FOR LIST PRICES: FORM#

JUNE 3, 2011 FORM# 290-1812P

