

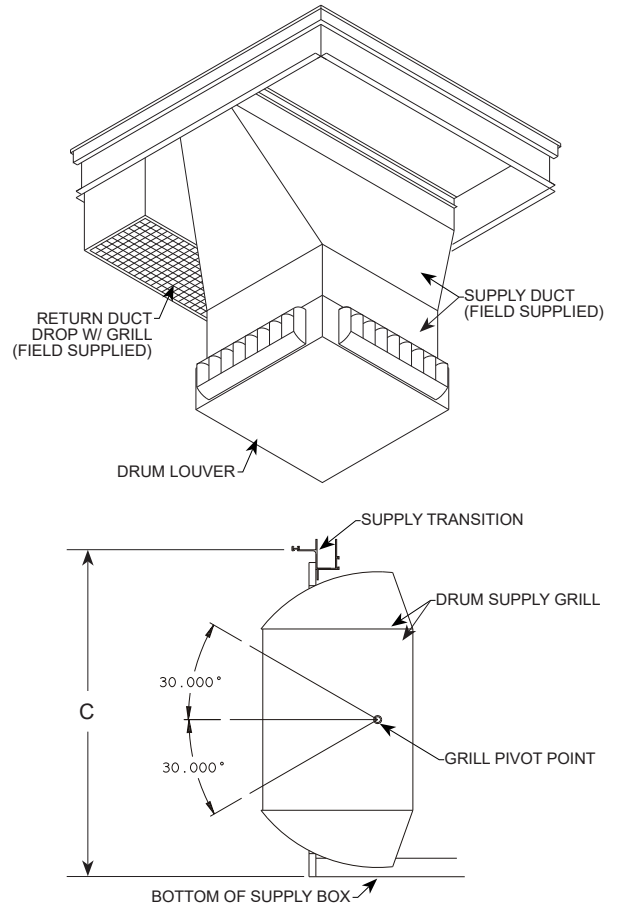
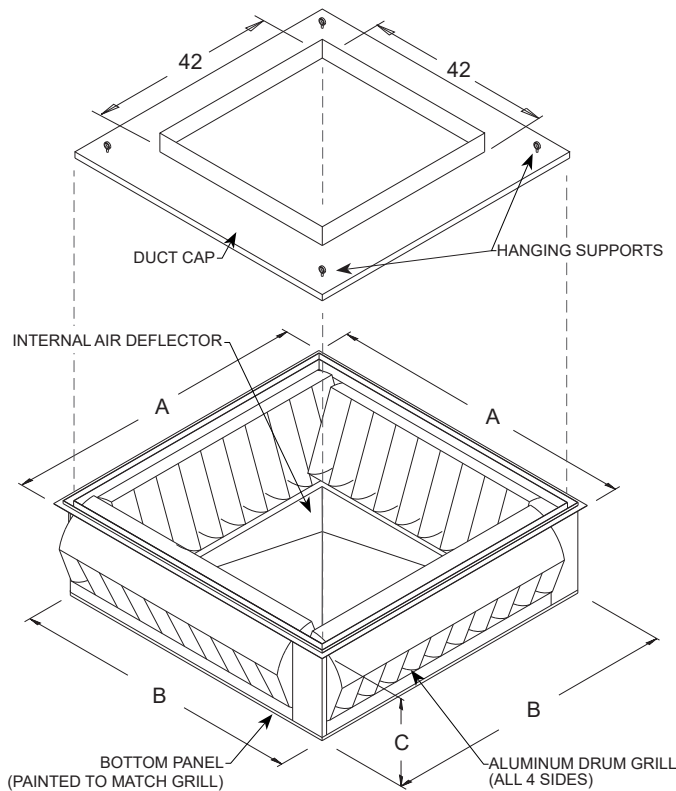
### Application

The Ruskin Rooftop Systems 575 series supply diffuser systems are designed to provide an air distribution system with the benefit of having directional air control. The system is ideal for open ceiling applications that need single point supply air with long throws. The Drum Louver allows you to "spot" the air where you need it most.

### Features

- Lightweight aluminum construction
- Drum louver diffusers for high installations
- Internal precision tuned 575 air deflector (standard)
- **Built in duct cap with hanging duct supports**

### Typical Installation



### Recommended Specification

Drum Louver diffuser shall be aluminum construction and provide minimum 30 degree vertical adjustment with full horizontal blade adjustment to deliver single point supply air for large space applications. Manufacturers published data sheet shall include CFM rating, noise, static, and throw information. Drum louver shall be in all respects equivalent to Ruskin Rooftop Systems model 575. Critical: Drum louver shall incorporate a standard 575 precision tuned internal air deflector to ensure quite even airflow to all sides with low pressure drop.

#### DIMENSIONAL DATA

RRS MODEL#	A	B	C	GRILL SIZE	WEIGHT
01-575-401042B	49.625	47.500	13.000	40 x 10	124 LBS

#### ENGINEERING DATA

RRS MODEL#	CFM	30° DEFLECTION			0° DEFLECTION			GRILL COLOR	DUCT CAP
		NOISE	STATIC	THROW	NOISE	STATIC	THROW		
01-575-401042B	10000	<45	.528	46	<40	.33	62	ALUMINUM/GRAY	INCLUDED

NOVEMBER 12, 2020 FORM# RRS\_575401042

SUPERSEDES: 04-03-20