

FEATURES

- Access for motor, blower, and blower drives.
- Adjustable motor sheave.
- Motor with automatic internal thermal protection.
- Modulating option includes fully programmable (factory set) variable frequency drive controlled by a differential pressure transducer designed to continuously monitor space pressure.
- Constant Volume option includes a contactor to controls on/off operation by communicating with the economizer logic.

HORIZONTAL DISCHARGE CENTRIFUGAL POWER EXHAUST FOR SSE YORK UNITS

ZH, ZF, ZR 102-150; ZJ, XP, ZT, ZB, KJ, WP, KT, KB 078-150

VOLTAGE	External Static (in. W.G)				FLA	Hp	Wt
	0.1	0.2	0.3	0.4			
230V/3Ph	4,200 cfm	4,000 cfm	3,900 cfm	3,800 cfm	5.6	2	148 Lbs.
460V/3Ph					2.8		

PLEASE NOTE:

1. Return air duct, dampers, return air grills are specific for each unit.
2. For proper electrical wire sizing, Provent power exhaust full load amps need to be added to equation.

ProVent P/N

CONSTANT VOLUME

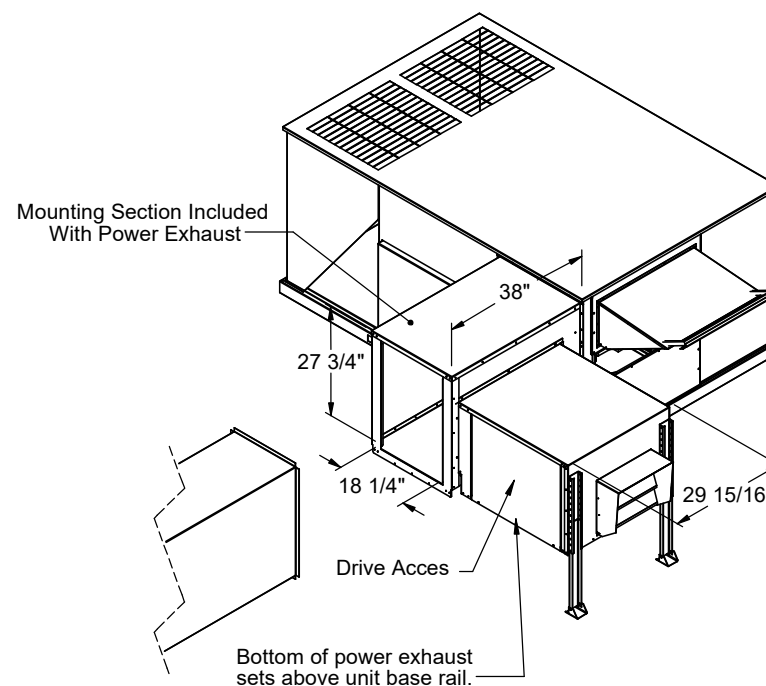
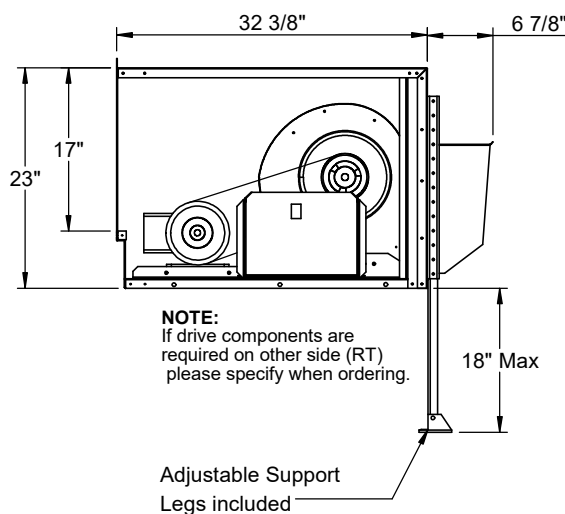
PEHCPRDLC25CS
208/230V 3Ph

PEHCPRDLC46CS
460V 3Ph

MODULATING

PEHCPRDLC25MS
208/230V 3Ph

PEHCPRDLC46MS
460V 3Ph



Ruskin Company Model CD-60 is AMCA Certified



3847 WABASH DR.
MIRA LOMA, CA 91752

PHONE (951) 685-1101
FAX (619) 872-9799

SUBMITTED TO: _____
COMPANY: _____
JOB NAME: _____
EQUIPMENT: _____
NOTES: _____

FORM NO:
PE-128

DATE:
5/2/2025

PART NUMBER:
PEHCPRDLC SERIES

REV:
-

DRAWN BY:
CNG