

FEATURES

- Includes fully modulating economizer. (See Form ECO-200 for Economizer Specs).
- LEED economizer option.
- Access for motor, blower, and blower drives.
- Adjustable motor sheave.
- Motor with automatic internal thermal protection.
- Modulating option includes fully programmable (factory set) variable frequency drive controlled by a differential pressure transducer designed to continuously monitor space pressure.
- Constant Volume option includes a contactor to controls on/off operation by communicating with the economizer logic.

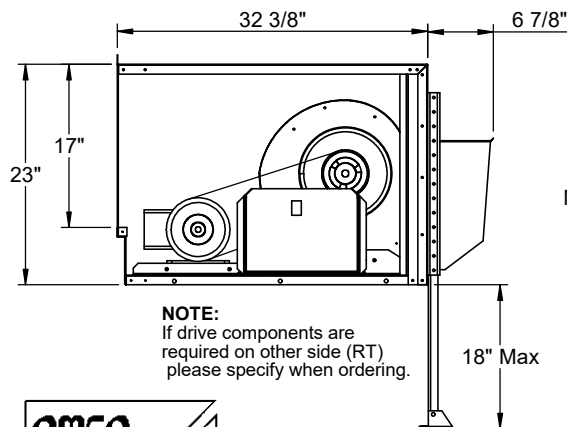
HORIZONTAL DISCHARGE CENTRIFUGAL POWER EXHAUST AND ECONOMIZER FOR SSE YORK UNITS

ZH, ZF, ZR 102-150; ZJ, XP, ZT, ZB, KJ, WP, KT, KB 078-150

VOLTAGE	External Static (in. W.G)				FLA	Hp	Wt
	0.1	0.2	0.3	0.4			
230V/3Ph					5.6	2	238 Lbs. (Includes Economizer)
460V/3Ph	4,200 cfm	4,000 cfm	3,900 cfm	3,800 cfm	2.8		

PLEASE NOTE:

- Return air duct, dampers, return air grills are specific for each unit.
- For proper electrical wire sizing, Provent power exhaust full load amps need to be added to equation.



Ruskin Company Model CD-60 is AMCA Certified

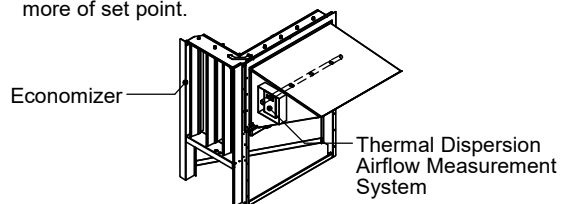
ProVent P/N

CONSTANT VOLUME	MODULATING
PEHCPRDLCDB25CS 208/230V 3Ph Selectable Dry Bulb	PEHCPRDLCDB25MS 208/230V 3Ph Selectable Dry Bulb
PEHCPRDLCEN25CS 208/230V 3Ph Enthalpy	PEHCPRDLCEN25MS 208/230V 3Ph Enthalpy
PEHCPRDLCDB46CS 460V 3Ph Selectable Dry Bulb	PEHCPRDLCDB46MS 460V 3Ph Selectable Dry Bulb
PEHCPRDLCEN46CS 460V 3Ph Enthalpy	PEHCPRDLCEN46MS 460V 3Ph Enthalpy

Note: For factory installed LEED economizer / power exhaust option, part number, FLOWECPRD3715, must be added.

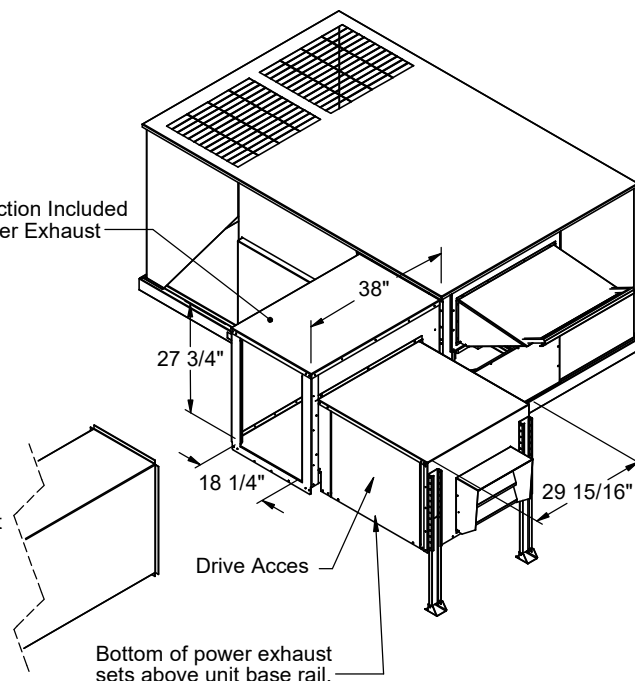
LEED ECONOMIZER / POWER EXHAUST OPTION

- ProVent P/N: FLOWECPRD3715
- Outside air measurement for dilution utilizing thermal dispersion technology and ASHRAE 62.1 compliant. Provides LEED credit by supplying feedback on ventilation system performance ensuring that the ventilation system maintains design requirements.
- Factory installed onto economizer/power exhaust standard.
- Provides analog outputs for BMS, visual or audible alert, and generates an alarm when conditions vary by 10% or more of set point.



Mounting Section Included With Power Exhaust

Adjustable Support Legs included



3847 WABASH DR.
MIRA LOMA, CA 91752

PHONE (951) 685-1101
FAX (619) 872-9799

SUBMITTED TO: _____
COMPANY: _____
JOB NAME: _____
EQUIPMENT: _____
NOTES: _____

FORM NO:
PE-90

DATE:
5/2/2025

PART NUMBER:
PEHCPRDLC SERIES

REV:
4

DRAWN BY:
CNG

