

FEATURES

- Includes fully modulating economizer. (See Form ECO-200 for Economizer Specs).
- LEED economizer option.
- Access for motor, blower, and blower drives.
- Adjustable motor sheave.
- Motor with automatic internal thermal protection.
- Modulating option includes fully programmable (factory set) variable frequency drive controlled by a differential pressure transducer designed to continuously monitor space pressure.
- Constant Volume option includes a contactor to controls on/off operation by communicating with the economizer logic.

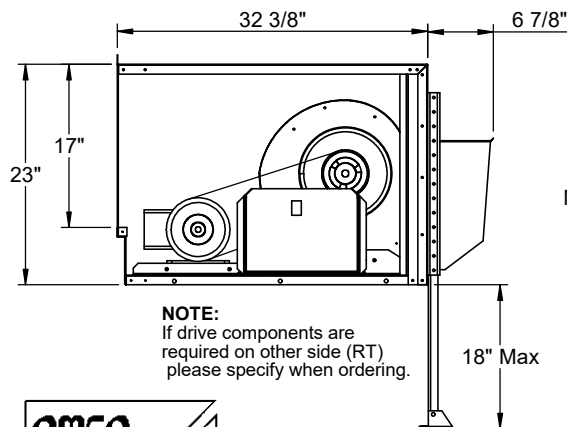
HORIZONTAL DISCHARGE CENTRIFUGAL POWER EXHAUST AND ECONOMIZER FOR SSE YORK UNITS

ZF, ZH, ZR 078-090

VOLTAGE	External Static (in. W.G)				FLA	Hp	Wt
	0.1	0.2	0.3	0.4			
230V/3Ph	2,640 cfm	2,472 cfm	2,344 cfm	2,148 cfm	3.2	1	228 Lbs. (Includes Economizer)
460V/3Ph					1.6		

PLEASE NOTE:

- Return air duct, dampers, return air grills are specific for each unit.
- For proper electrical wire sizing, Provent power exhaust full load amps need to be added to equation.



Ruskin Company Model CD-60 is AMCA Certified

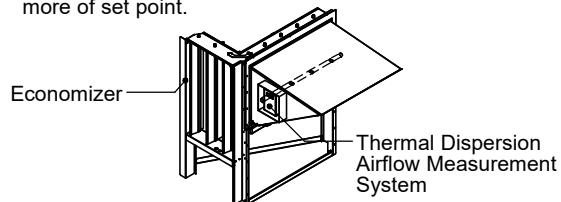
ProVent P/N

CONSTANT VOLUME	MODULATING
PEHCPRDSCDB25CS 208/230V 3Ph Selectable Dry Bulb	PEHCPRDSCDB25MS 208/230V 3Ph Selectable Dry Bulb
PEHCPRDSCEN25CS 208/230V 3Ph Enthalpy	PEHCPRDSCEN25MS 208/230V 3Ph Enthalpy
PEHCPRDSCDB46CS 460V 3Ph Selectable Dry Bulb	PEHCPRDSCDB46MS 460V 3Ph Selectable Dry Bulb
PEHCPRDSCEN46CS 460V 3Ph Enthalpy	PEHCPRDSCEN46MS 460V 3Ph Enthalpy

Note: For factory installed LEED economizer / power exhaust option, part number, FLOWECPRD3715, must be added.

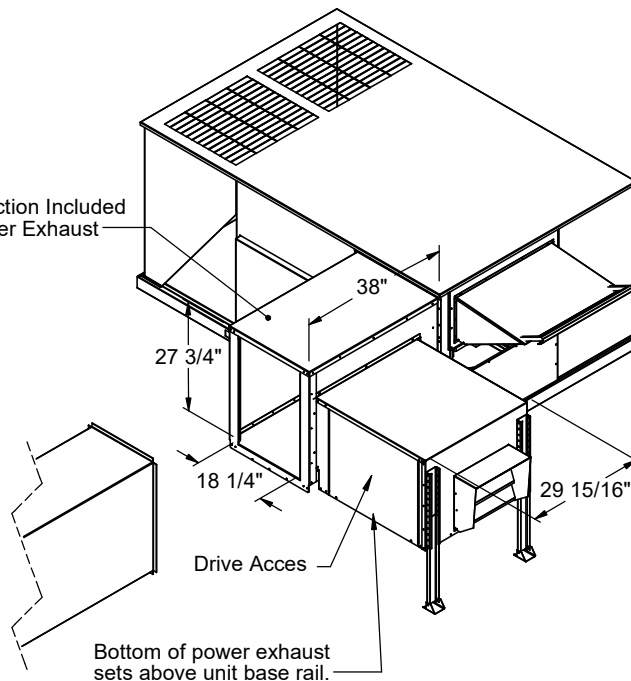
LEED ECONOMIZER / POWER EXHAUST OPTION

- ProVent P/N: FLOWECPRD3715
- Outside air measurement for dilution utilizing thermal dispersion technology and ASHRAE 62.1 compliant. Provides LEED credit by supplying feedback on ventilation system performance ensuring that the ventilation system maintains design requirements.
- Factory installed onto economizer/power exhaust standard.
- Provides analog outputs for BMS, visual or audible alert, and generates an alarm when conditions vary by 10% or more of set point.



Mounting Section Included With Power Exhaust

Adjustable Support Legs included



3847 WABASH DR.
MIRA LOMA, CA 91752

PHONE (951) 685-1101
FAX (619) 872-9799

SUBMITTED TO: _____
COMPANY: _____
JOB NAME: _____
EQUIPMENT: _____
NOTES: _____

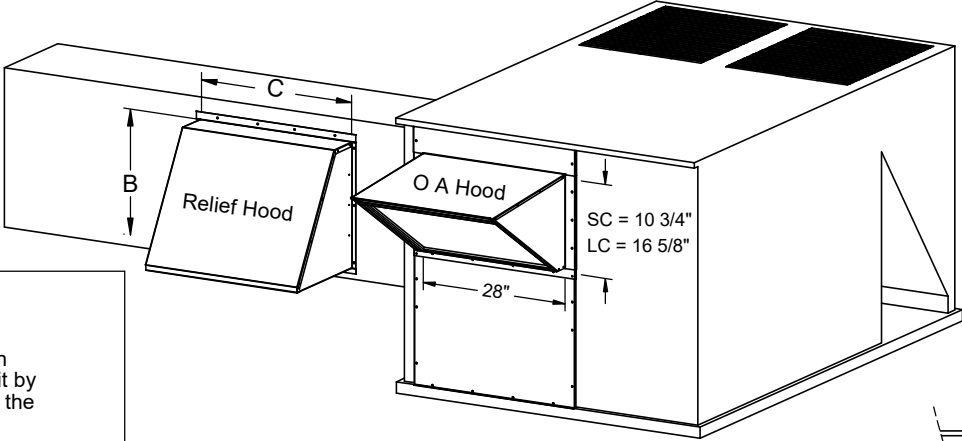
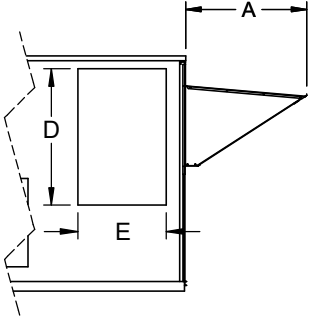


FORM NO:
PE-91

DATE:
5/2/2025

PART NUMBER:
PEHCPRDSCS SERIES

REV:
3

DRAWN BY:
CNG

<div><div><div>FEATURES</div><div><ul style="list-style-type: none">• CA Title 24 Compliant.• Direct coupled style actuator standard.• Stainless steel damper side seals.• AMCA certified CD-60 Airfoil dampers blades.• Meets leakage rate as required by ASHRAE 90.1.• External linkage system.• Mechanically secured outside air intake filter.• Capable of introducing up to 100% outdoor air.• Metal Filter Included: 25-1/2" x 26-3/8"x 7/8" (exact) for Large cabinet 18-3/8" x 26-3/8" x 7/8" (exact) for Small cabinet</div></div><div><div>FEATURES (When Ordered With Control Options)</div><div><ul style="list-style-type: none">• Controls are FDD Compliant• Fully modulating damper controls with enthalpy, dry bulb and differential temperature sensor options.• Selectable economizer changeover temperature set point.• Requires part number 6210-0046 for Dual Enthalpy.• DCV standard for CO2 controls. Wall or duct mounted CO2 sensor provided as option: CO2WM - Wall Mount CO2DM - Duct Mount</div></div></div>		<div><div>HORIZONTAL DISCHARGE ECONOMIZER WITH BAROMETRIC RELIEF FOR YORK UNITS</div><div>ZT/ZR/ZH/ZJ/KT/KJ 037-150 ZF/XP/ZB/WP/KB/DH/DM/DF/DR/DJ/BP 078-150</div><table><tr><th>PROVENT P/N</th><th>YORK UNITS</th><th>A</th><th>B</th><th>C</th><th>D</th><th>E</th></tr><tr><td>ECOHPRDSC** (Small Cabinet)</td><td>ZT, ZH, ZR, ZJ, KT, KJ 037-061 ZF, ZH, ZR 078, 090 DH 078-102 DF, DM 090, 102; BP 090</td><td>20 11/16"</td><td>17"</td><td>29 3/4"</td><td>27 3/4"</td><td>18"</td></tr><tr><td>ECOHPRDLC** (Large Cabinet)</td><td>ZF, ZH, ZR 102-150 ZJ, XP, ZT, ZB 078-150 KJ, WP, KT, KB 078-150 BP 078, 102-150; DJ 150 DH 120, 150; DF 078, 150 DM 078, 120, 150; DR 090-150</td><td>25 5/16"</td><td>17"</td><td>29 3/4"</td><td>28 1/4"</td><td>18"</td></tr></table></div>							PROVENT P/N	YORK UNITS	A	B	C	D	E	ECOHPRDSC** (Small Cabinet)	ZT, ZH, ZR, ZJ, KT, KJ 037-061 ZF, ZH, ZR 078, 090 DH 078-102 DF, DM 090, 102; BP 090	20 11/16"	17"	29 3/4"	27 3/4"	18"	ECOHPRDLC** (Large Cabinet)	ZF, ZH, ZR 102-150 ZJ, XP, ZT, ZB 078-150 KJ, WP, KT, KB 078-150 BP 078, 102-150; DJ 150 DH 120, 150; DF 078, 150 DM 078, 120, 150; DR 090-150	25 5/16"	17"	29 3/4"	28 1/4"	18"	<div><div>PROVENT P/N</div><div>ECOHPRDSCAC (2-10V Actuator Only)</div><div>ECOHPRDSCDBJ (Fully Modulating Dry Bulb)</div><div>ECOHPRDSCENJ (Fully Modulating Enthalpy)</div><div>ECOHPRDSCDBS (SSE Controller Dry Bulb)</div><div>ECOHPRDSCENS (SSE Controller Enthalpy)</div></div> <div>76 Lb.</div>
PROVENT P/N	YORK UNITS	A	B	C	D	E																								
ECOHPRDSC** (Small Cabinet)	ZT, ZH, ZR, ZJ, KT, KJ 037-061 ZF, ZH, ZR 078, 090 DH 078-102 DF, DM 090, 102; BP 090	20 11/16"	17"	29 3/4"	27 3/4"	18"																								
ECOHPRDLC** (Large Cabinet)	ZF, ZH, ZR 102-150 ZJ, XP, ZT, ZB 078-150 KJ, WP, KT, KB 078-150 BP 078, 102-150; DJ 150 DH 120, 150; DF 078, 150 DM 078, 120, 150; DR 090-150	25 5/16"	17"	29 3/4"	28 1/4"	18"																								
<div><div>LEED ECONOMIZER OPTION</div><div><ul style="list-style-type: none">• ProVent P/N: FLOWECPRDSC or FLOWECPRDLC• Outside air measurement for dilution utilizing thermal dispersion technology and ASHRAE 62.1 compliant. Provides LEED credit by supplying feedback on ventilation system performance ensuring the ventilation system maintains design requirements.• Factory or field installed in economizer OA hood.• Provides analog outputs for BMS, visual or audible alert, and generates an alarm when conditions vary by 10% or more of set point.</div></div> <div><div><div>Economizer</div><div>Return Air</div><div>Outside Air Hood</div><div>Thermal Dispersion Airflow Measurement System</div></div></div>		<div><div></div><div></div></div> <div><div><div>Ruskin Company Model CD-60 is AMCA Certified</div></div></div>							<div><div>Note: For factory installed LEED economizer option, part number, FLOWECPRD**, must be added.</div></div> <div>87 Lb.</div>																					
<div><div></div></div>		<div>3847 WABASH DR. MIRA LOMA, CA 91725</div> <div>PHONE (951) 685-1101 FAX (619) 872-9799</div>		<div>SUBMITTED TO: _____</div> <div>COMPANY: _____</div> <div>JOB NAME: _____</div> <div>EQUIPMENT: _____</div> <div>NOTES: _____</div>		<div>FORM NO: ECO-200</div> <div>DATE: 12/10/2024</div>	<div>PART NUMBER: ECOHPRD Series</div> <div>REV: 11</div>	<div>DRAWN BY: CNG</div>																						