

FEATURES

- Roof curb perimeter made of 14 ga. galvanized steel.
- Gasketing package provided.
- Heat treated wood nailer provided.
- Corner flanges are pre-threaded for easy bolt on assembly.
- Pitched, adjustable pitch/adjustable height, welded, different height, isolation and calculated curbs are available.

NOTES

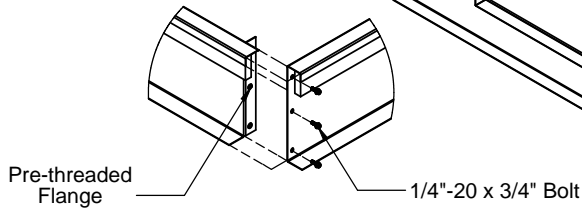
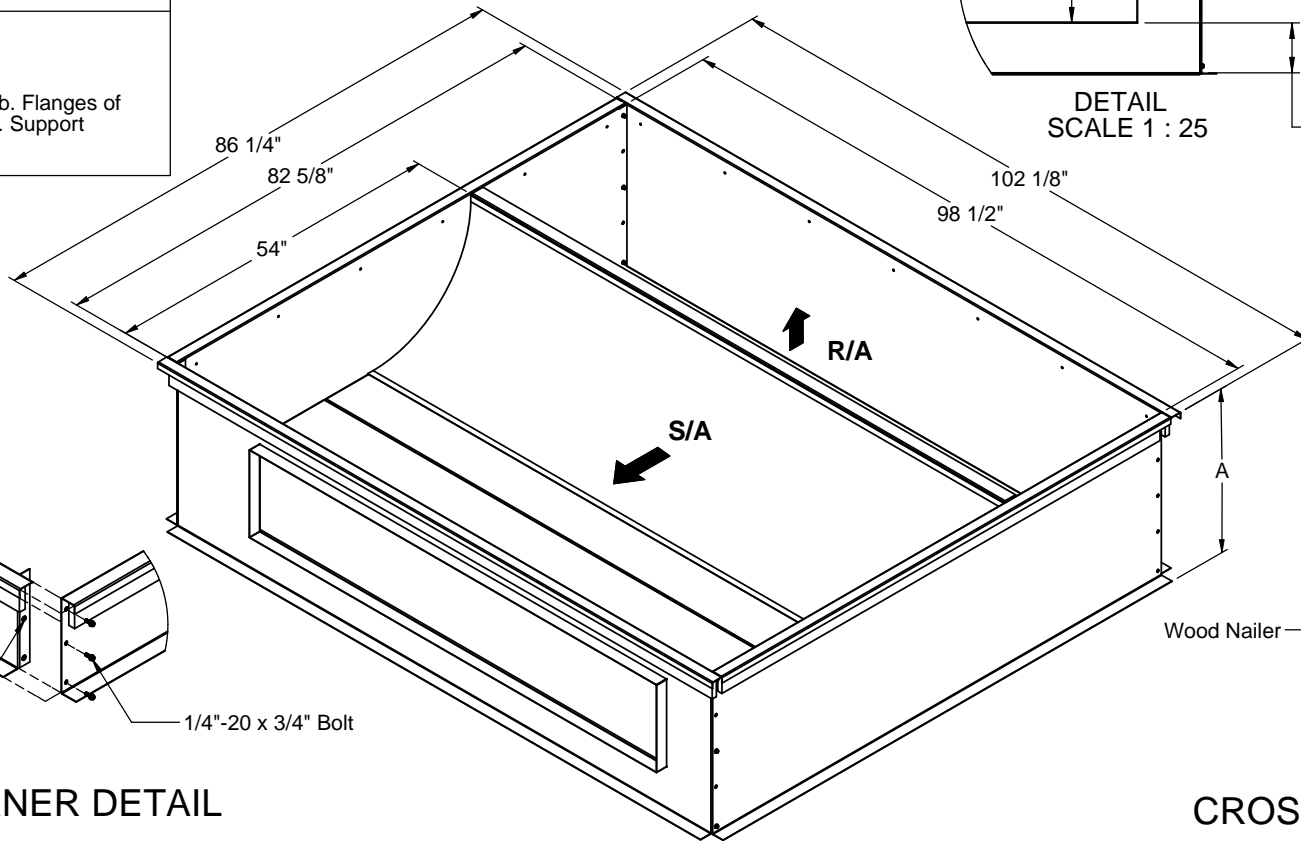
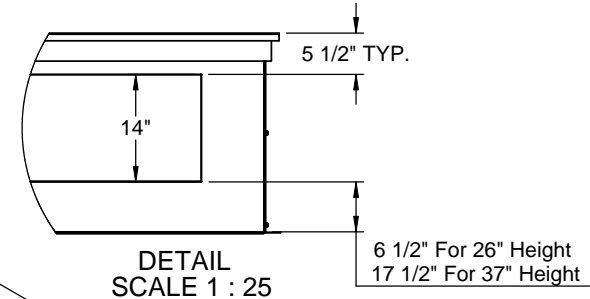
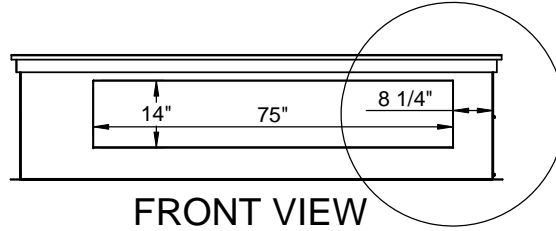
- Attach ductwork to roof curb. Flanges of duct rest on top of the curb. Support ductwork below the curb.

KNOCK-DOWN ROOF CURBS FOR HORIZONTAL ALLIED UNITS

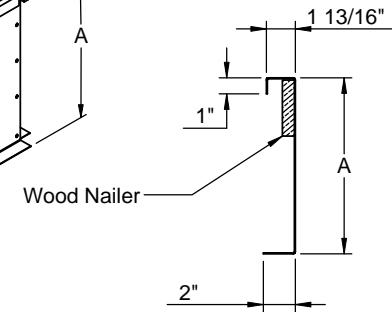
LGH/LCH 156-240H, 300S
KGA/KCA 180-300S, KHA 180-240S

PROVENT P/N	A	EST. WEIGHT
CBKDHCXB152426	26"	386 Lbs.
CBKDHCXB152437	37"	502 Lbs.
*CBKDHCXB3030	30"	441 Lbs
*CBKDHCXB3041	41"	529 Lbs

* For KGA, KCA, LGH, LCH 300 S UNITS



CORNER DETAIL



CROSS SECTION DETAIL



3847 WABASH DR.
MIRA LOMA, CA 91725

PHONE (951) 685-1101
FAX (619) 872-9799

SUBMITTED TO: _____
COMPANY: _____
JOB NAME: _____
EQUIPMENT: _____
NOTES: _____

FORM NO:
-

DATE:
1/9/2013

PART NUMBER:
CBKDHCXB Series

REV:
-

DRAWN BY:
CNG