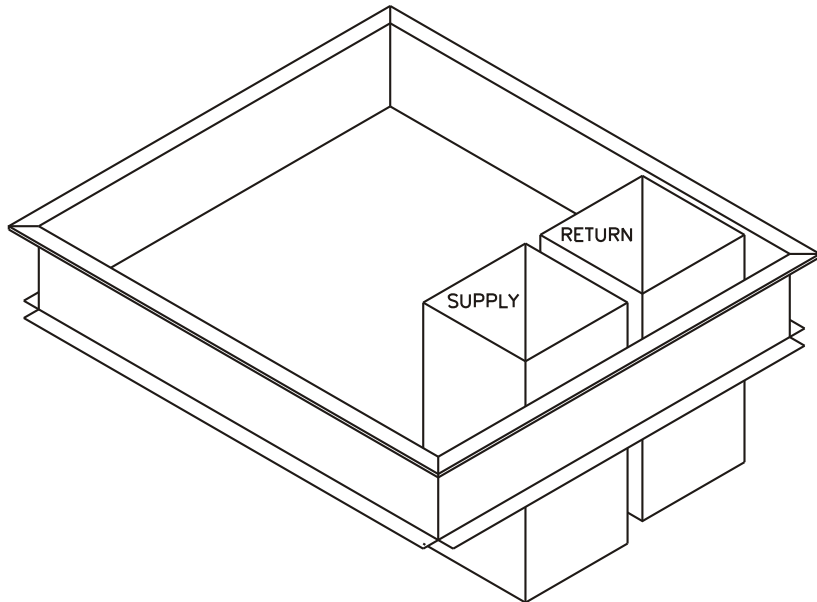
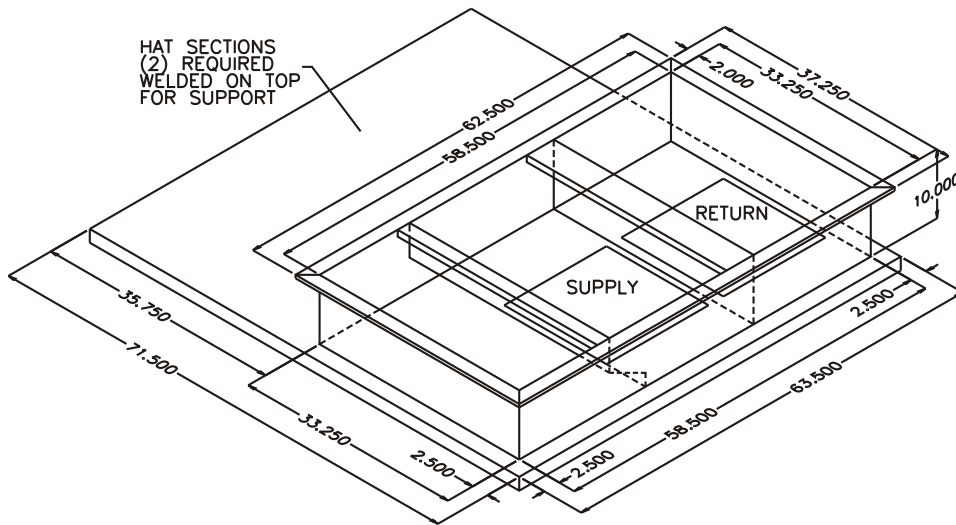




CURB ADAPTOR FOR YORK INTERNATIONAL
OLD UNIT: 585E-H 048-060 / 579 E-J 060
NEW UNIT: ZF/ZR/ZJ/DY/DJ/XP/BQ/BCH 036-060
DR/BP 036-072 / DF/DM 072

Notes:

1. Fully welded G90 galvanized construction.
2. Fully insulated.
3. Gaskets shipped with adaptor.
4. Separate supply and return ducts only.
(No concentrics - Consult factory.)
5. Adaptor matches existing duct.
6. Existing curb O.D. Is 1 inch less than bottom skirt of adapter.



RRS ADAPTOR MODEL	DUCT TYPE	EXISTING CURB DIMENSIONS	HEIGHT
80-290-1327PV	NON-CONCENTRIC	70.50 x 62.50	10"

FOR LIST PRICES: FORM#

JUNE 3, 2011 FORM# 290-1327P

