

For wood, concrete and steel attachment, see Roof Anchorage Detail Form No. CB-62.

VIBRATION ISOLATION ROOF CURB FOR YORK UNITS

ZX, KX04-07; XX, WX, ZX, KXA7
ZY, ZQ, XY, XQ, ZL, KY, KQ, WY, WQ, KL04-06

FEATURES

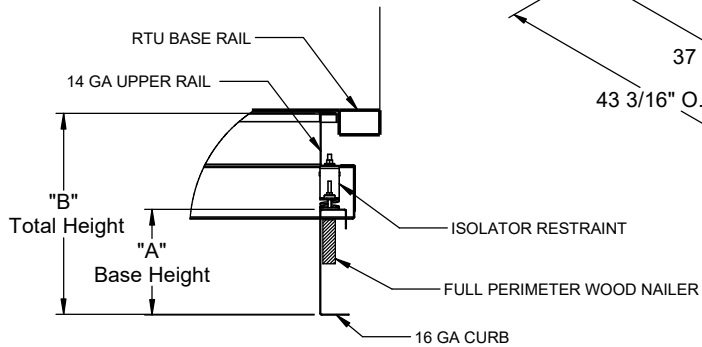
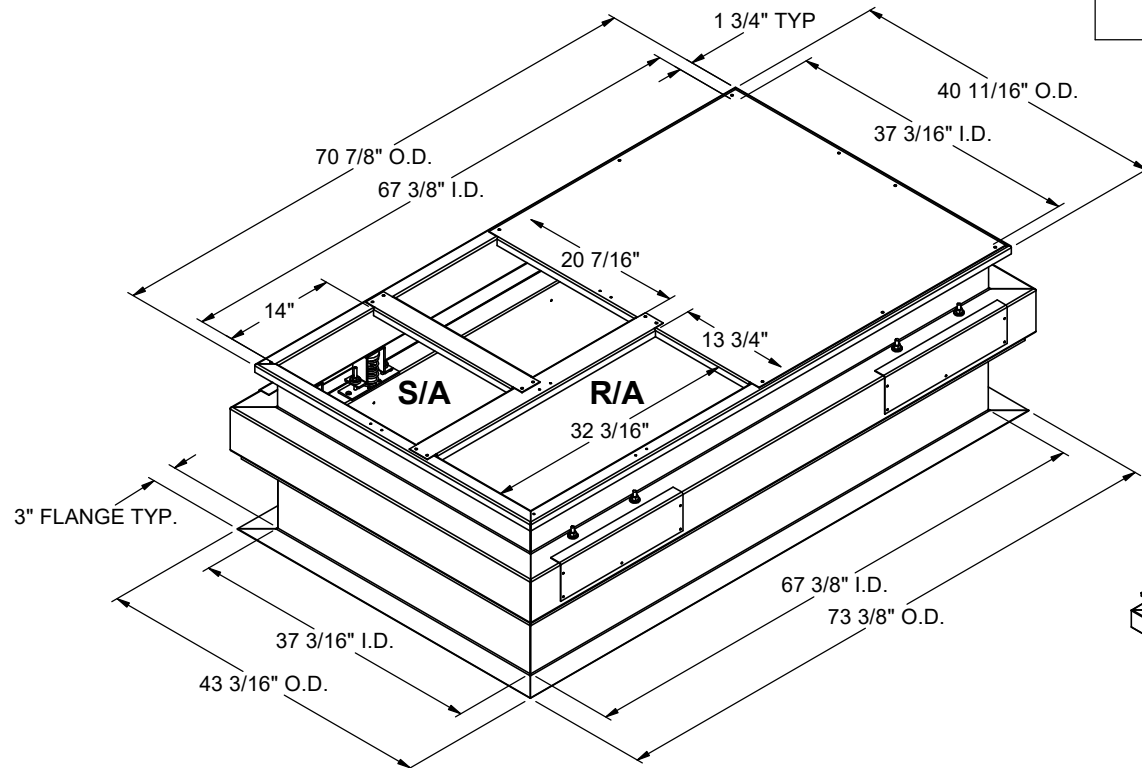
- Roof curbs sides and ends are 16 ga.
- Fully welded construction.
- Gasketing package provided.
- Heat treated wood nailer provided.
- insulated deck pans provided.
- Pitched curbs and taller curbs are available.

NOTES

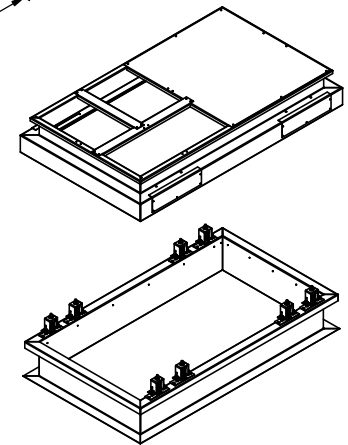
- Attach ductwork to roof curb. Flanges of duct rest on top of the curb, Support ductwork below the curb.

| PROVENT P/N | A | B | EST. WEIGHT |
|-------------|-----|-----|-------------|
| CBISPRS18** | 8" | 18" | 230 Lbs. |
| CBISPRS21** | 11" | 21" | 250 Lbs. |
| CBISPRS24** | 14" | 24" | 270 Lbs. |

****Note:** Spring configuration must be added to part number at time of order. See Price Guide for details.



SIDE VIEW DETAIL



EXPLODED DETAIL



3847 WABASH DR.
MIRA LOMA, CA 91752

PHONE (951) 685-1101
FAX (619) 872-9799

JOB NAME: _____
ADDRESS: _____
NOTES: _____

FORM NO:
CBIS-117

DATE:
1/10/2025

PART NUMBER:
CBISPRS SERIES

REV:
6

DRAWN BY:
CNG