

For wood, concrete and steel attachment see Roof Anchorage Detail, Form No. CB-60.

Welded isolation springs housing are standard. For bolted spring housing, neoprene pads and spring cups see Weldment and Bolting Detail, Form No. CB-61

FEATURES

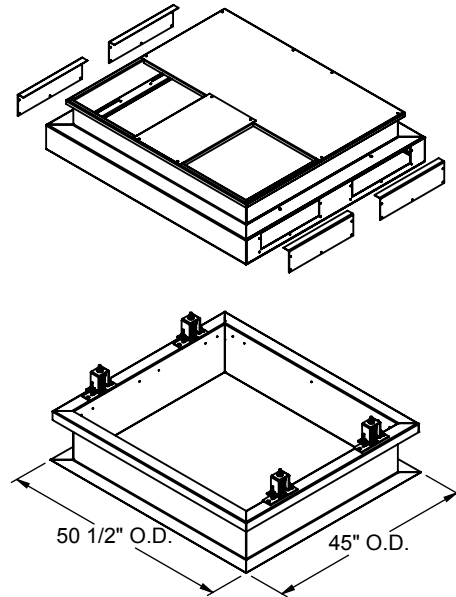
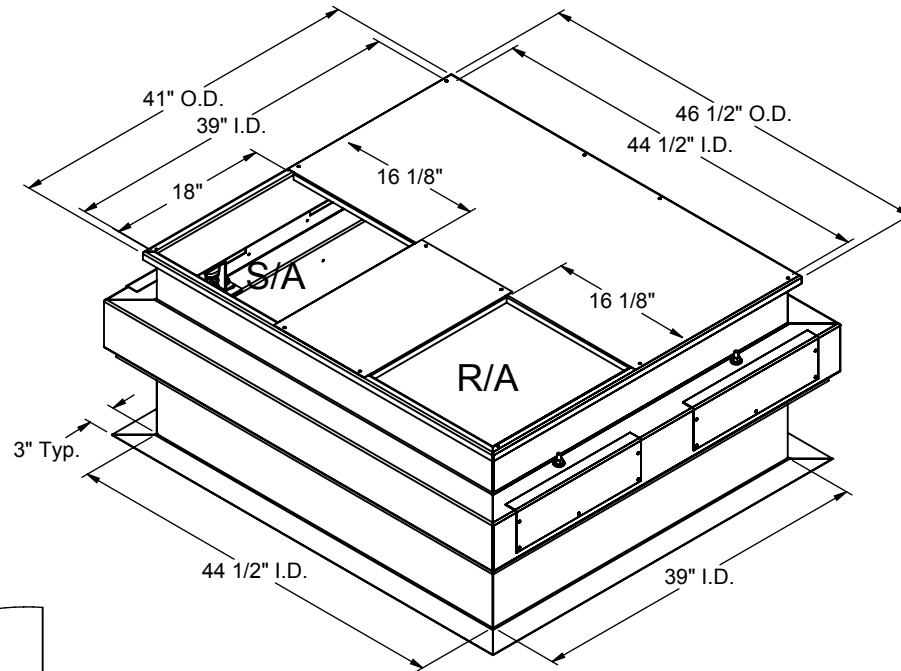
- Roof curbs sides and ends are 16 ga.
- Fully welded construction.
- Gasketing package provided.
- Heat treated wood nailer provided.
- insulated deck pans provided.
- Pitched curbs and taller curbs are available.

NOTES

- Attach ductwork to roof curb. Flanges of duct rest on top of the curb, Support ductwork below the curb.
- Thru the curb utilities are available. Contact you York distributor or Provent directly.

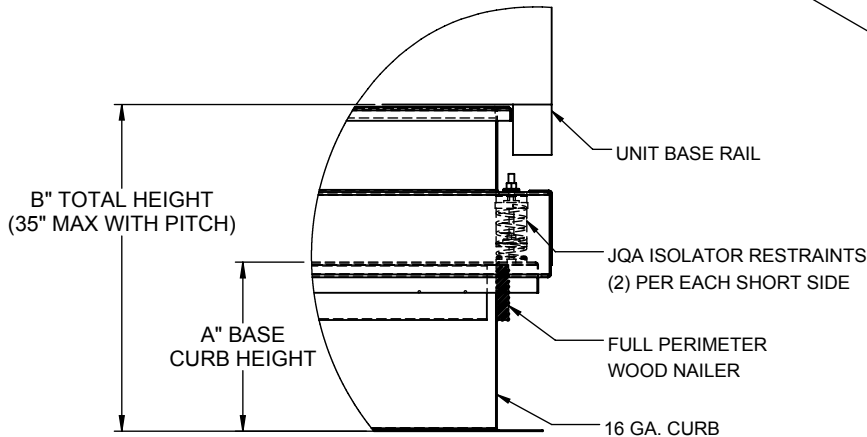
VIBRATION ISOLATION ROOF CURB FOR YORK UNITS

P***B CABINET



PROVENT P/N	A	B	EST. WEIGHT
CBISLXL18*	8"	18"	175 Lbs.
CBISLXL21**	11"	21"	193 Lbs.
CBISLXL24**	14"	24"	211 Lbs.

**Note: Spring configuration must be added to part number at time of order



PROFILE DETAIL



3847 WABASH DRIVE
MIRA LOMA, CA 91752
PHONE (951) 685-1101
FAX (619) 872-9799

SUBMITTED TO: _____
COMPANY: _____
JOB NAME: _____
EQUIPMENT: _____
NOTES: _____

FORM NO:
CBIS-120

PART NUMBER:
CBISLXL SERIES

DATE:
11/2/2018

REV:
-

DRAWN BY:
ALL