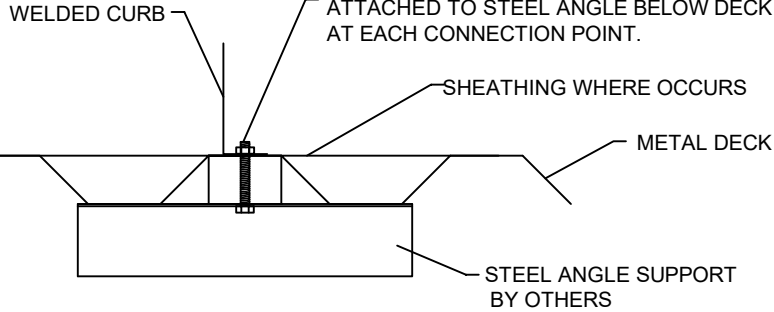


**STEEL ATTACHMENT**

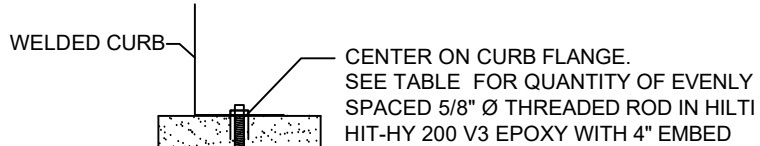
CENTER ON CURB FLANGE. SEE TABLE FOR QUANTITY OF EVENLY SPACED 1/2" Ø A307 BOLTS ATTACHED TO STEEL ANGLE BELOW DECK AT EACH CONNECTION POINT.



**ASSUMES:**

CONC SLAB  
 $f_c = 4000\text{PSI}$  MINIMUM  
 6" MIN THICKNESS  
 NORMAL WEIGHT CONCRETE  
 MIN. 9-1/8" EDGE DISTANCE.

**CONCRETE ATTACHMENT**



Meets seismic requirements for the following codes:  
 CBC 2022  
 IBC 2021

ROOF ANCHORAGE DETAIL
<b>CBISC Series</b>
LXS
LXL
SUN3672
PRD3715
PRS
PRL
SAV1518
SAV2025
SAV28

**NO. OF ANCHORAGE BOLTS REQUIRED**

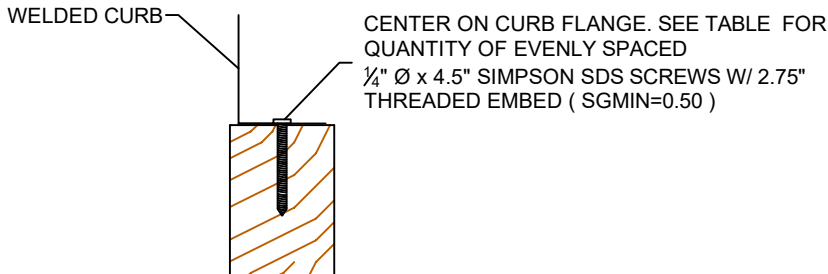
CURB	LONG SIDE	SHORT SIDE
LXS	3 @ 19.25" O.C.	2 @ 23" O.C.
LXL	3 @ 19.25" O.C.	2 @ 33" O.C.
SUN3672	4 @ 21" O.C.	2 @ 27.25" O.C.
PRD3715	6 @ 14.28" O.C.	3 @ 20.75" O.C.
PRS	4 @ 20.46" O.C.	2 @ 31.13" O.C.
PRL	5 @ 17.44" O.C.	2 @ 41.5" O.C.
SAV1518	6 @ 22.43" O.C.	3 @ 35.56" O.C.
SAV2025	7 @ 21.02" O.C.	3 @ 35.56" O.C.
SAV28	7 @ 23.75" O.C.	3 @ 35.56" O.C.

**NO. OF ANCHORAGE BOLTS REQUIRED**

CURB	LONG SIDE	SHORT SIDE
LXS	4 @ 12.83" O.C.	2 @ 23.0" O.C.
LXL	4 @ 12.83" O.C.	3 @ 16.50" O.C.
SUN3672	4 @ 21.0" O.C.	2 @ 27.25" O.C.
PRD3715	9 @ 8.92" O.C.	6 @ 8.30" O.C.
PRS	5 @ 15.34" O.C.	3 @ 15.56" O.C.
PRL	7 @ 11.63" O.C.	4 @ 13.83" O.C.
SAV1518	8 @ 16.02" O.C.	6 @ 14.23" O.C.
SAV2025	9 @ 15.77" O.C.	6 @ 14.23" O.C.
SAV28	10 @ 15.83" O.C.	6 @ 14.23" O.C.

\* SIX INCHES FROM EACH CORNER EVENLY SPACED.  
 \*\* CENTERED.

**WOOD ATTACHMENT**



**NO. OF ANCHORAGE SCREWS REQUIRED**

CURB	LONG SIDE	SHORT SIDE
LXS	8 @ 6.07" O.C.	5 @ 6.75" O.C.
LXL	7 @ 7.08" O.C.	7 @ 6.17" O.C.
SUN3672	9 @ 8.38" O.C.	5 @ 7.81" O.C.
PRD3715	15 @ 5.38" O.C.	10 @ 5.06" O.C.
PRS	10 @ 7.26" O.C.	6 @ 7.03" O.C.
PRL	12 @ 6.70" O.C.	8 @ 6.50" O.C.
SAV1518	15 @ 8.29" O.C.	10 @ 8.35" O.C.
SAV2025	18 @ 7.65" O.C.	10 @ 8.35" O.C.
SAV28	20 @ 7.71" O.C.	10 @ 8.35" O.C.

FOUR INCHES FROM EACH CORNER EVENLY SPACED



3847 WABASH DRIVE  
 MIRA LOMA, CA 91752  
 PHONE (951) 685-1101  
 FAX (619) 872-9799

SUBMITTED TO: \_\_\_\_\_  
 COMPANY: \_\_\_\_\_  
 JOB NAME: \_\_\_\_\_  
 EQUIPMENT: \_\_\_\_\_  
 NOTES: \_\_\_\_\_

FORM NO: CB-62  
 DATE: 6/28/2023  
 REV: 4  
 DRAWN BY: FMM