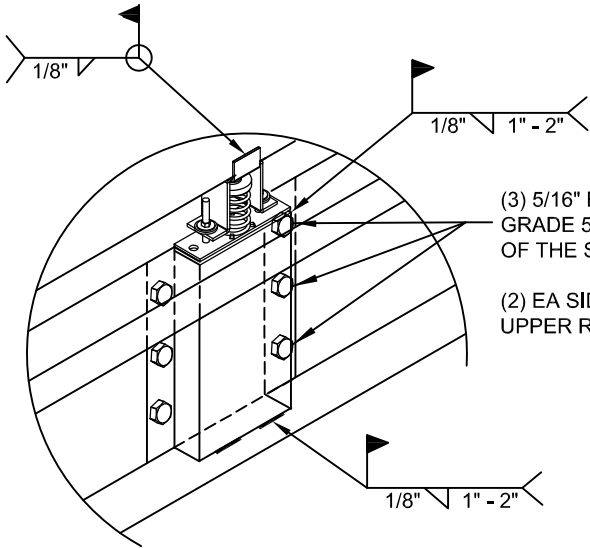


**WELDMENT AND BOLTING DETAIL**

OPTIONAL  
WELD I.L.O.  
BOLTED STUD



(3) 5/16" BOLTS  
GRADE 5 EA SIDE  
OF THE STIFFENER

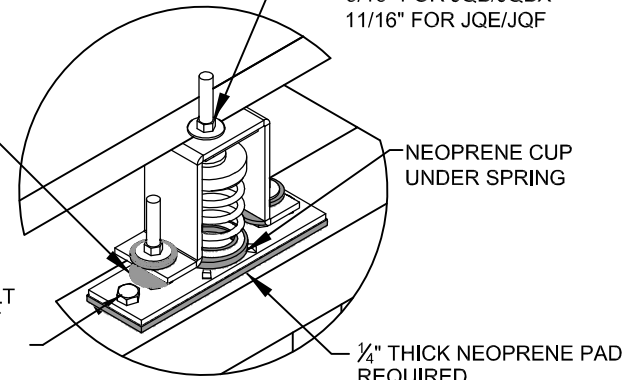
(2) EA SIDE FOR  
UPPER RAIL SUPPORT

**BASE CURB SUPPORT**

OPTIONAL BOTTOM  
BUMPER FOR:  
ISCALSLU180  
ISCALSLM1830

FOR JQA:  
3/16" Ø HOLE USE 1/2" Ø A307 BOLT  
WITH FLAT WASHER AND NUT

FOR JQB, JQBX, JQE, JQF:  
1/16" Ø HOLE USE 5/8" Ø A307 BOLT  
WITH FLAT WASHER AND NUT



HOLE FOR ISOLATOR STUD,  
W/ FLAT WASHER REQUIRED  
UNDER NUT  
7/16" FOR JQA  
9/16" FOR JQB/JQBX  
11/16" FOR JQE/JQF

NEOPRENE CUP  
UNDER SPRING

1/4" THICK NEOPRENE PAD  
REQUIRED

**FOR BOLT ON ISOLATORS**



3847 WABASH DRIVE  
MIRA LOMA, CA 91725

PHONE (951) 685-1101  
FAX (619) 872-9799

SUBMITTED TO: \_\_\_\_\_  
COMPANY: \_\_\_\_\_  
JOB NAME: \_\_\_\_\_  
EQUIPMENT: \_\_\_\_\_  
NOTES: \_\_\_\_\_

FORM NO:  
CB-61

DATE:  
02/08/18

REV:  
1

DRAWN BY:  
ALL