

For wood, concrete and steel attachment see Roof Anchorage Detail, Form No. CB-62.

Welded Isolation springs housing are standard. For bolted spring housing, neoprene pads and spring cups see Weldment and Bolting Detail, Form No. CB-61

FEATURES

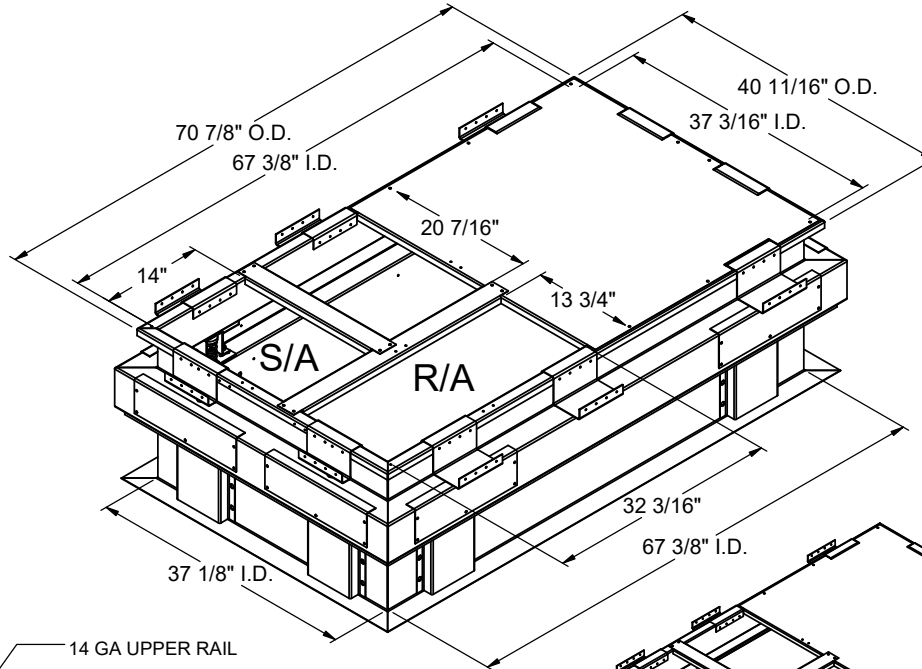
- Roof curbs sides and ends are 14 ga.
- Fully welded construction.
- Gasketing package provided.
- Heat treated wood nailer provided.
- Insulated deck pans provided.
- Pitched curbs and taller curbs are available.

NOTES

- Attach ductwork to roof curb. Flanges of duct rest on top of the curb, Support ductwork below the curb.
- Thru the curb utilities are available. Contact your York distributor or Provent directly.

STRUCTURALLY CALCULATED VIBRATION ISOLATION ROOF CURB FOR YORK UNITS

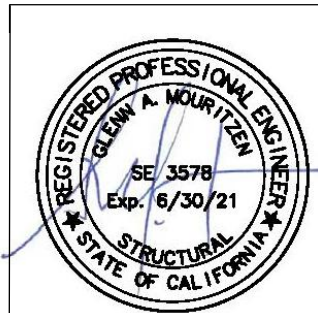
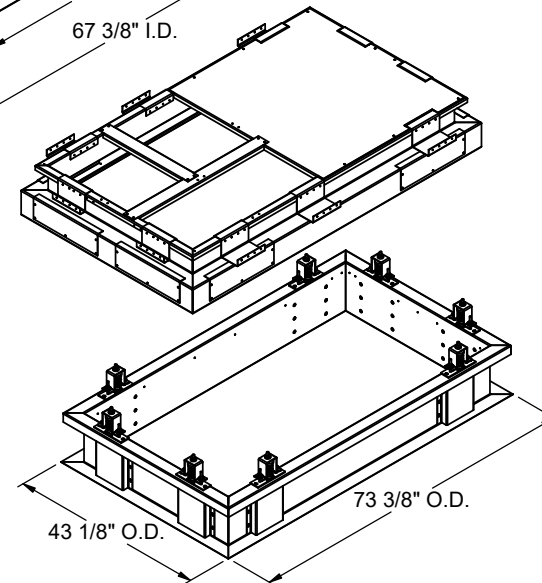
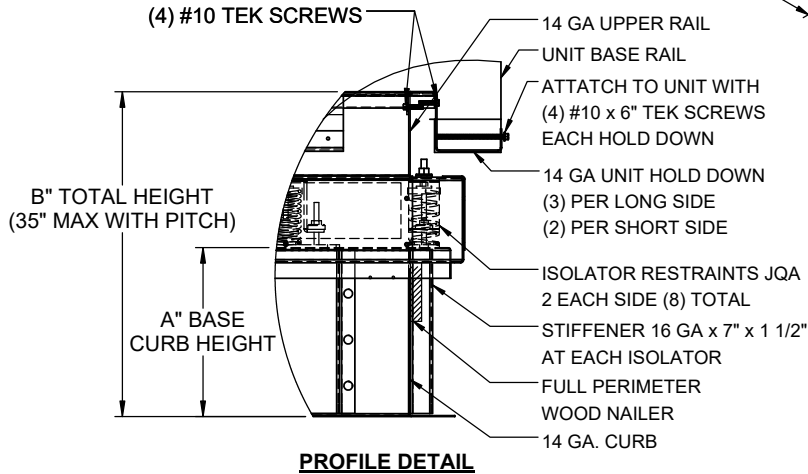
ZX 04-07; XX A7, ZX A7, ZY, ZQ, XY, XQ 04-06



PROVENT P/N	A	B	EST. WEIGHT
CBISPRS18**	8"	18"	305 Lbs.
CBISPRS21**	11"	21"	320 Lbs.
CBISPRS24**	14"	24"	335 Lbs.

**Note: Spring configuration must be added to part number at time of order

Meets seismic requirements for the following codes:
CBC 2019
IBC 2018



3847 WABASH DRIVE
MIRA LOMA, CA 91752
PHONE (951) 685-1101
FAX (619) 872-9799

SUBMITTED TO: _____
COMPANY: _____
JOB NAME: _____
EQUIPMENT: _____
NOTES: _____

FORM NO:
CBISC-05
DATE:
4/2/2021

PART NUMBER:
-
REV:
2
DRAWN BY:
ALL