

For wood, concrete and steel attachment see Roof Anchorage Detail, Form No. CB-62.

Welded isolation springs housing are standard. For bolted spring housing, neoprene pads and spring cups see Weldment and Bolting Detail, Form No. CB-61

## STRUCTURALLY CALCULATED VIBRATION ISOLATION ROOF CURB FOR YORK UNITS

ZX 04-07; XX A7, ZX A7, ZY, ZQ, XY, XQ, ZL 04-06

PROVENT P/N	A	B	EST. WEIGHT
CBISCPRS18**	8"	18"	305 Lbs.
CBISCPRS21**	11"	21"	320 Lbs.
CBISCPRS24**	14"	24"	335 Lbs.

\*\*Note: Spring configuration must be added to part number at time of order

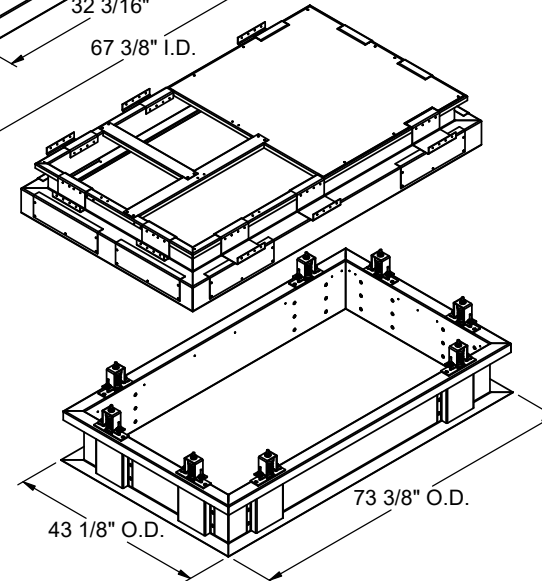
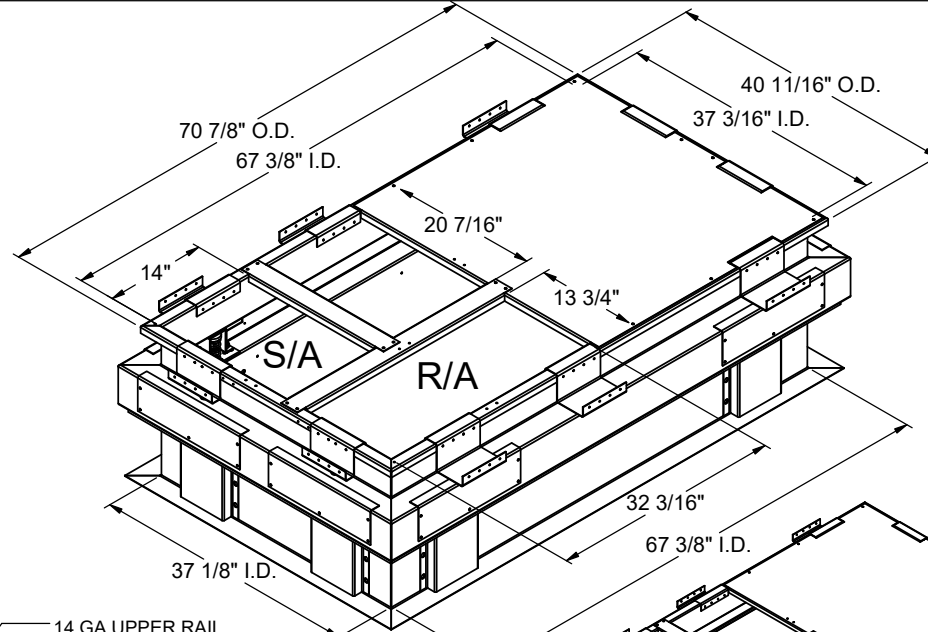
Meets seismic requirements for the following codes:  
CBC 2019  
IBC 2018

### FEATURES

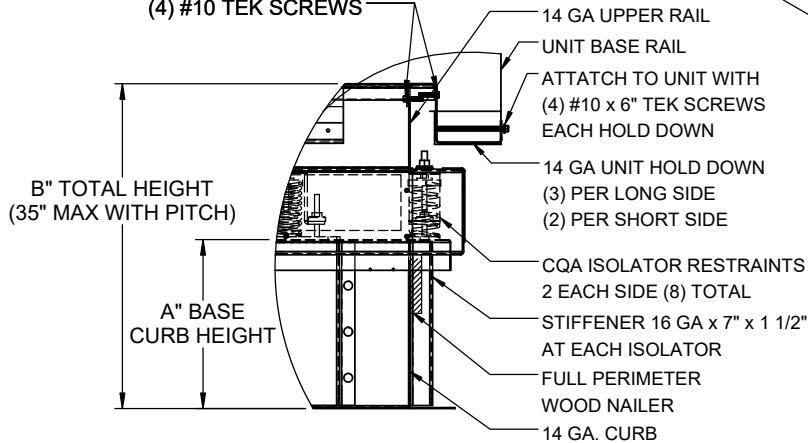
- Roof curbs sides and ends are 14 ga.
- Fully welded construction.
- Gasketing package provided.
- Heat treated wood nailer provided.
- Insulated deck pans provided.
- Pitched curbs and taller curbs are available.
- CalDyn OSHPd pre-approved seismic restraints. (OPM-0401-13), (CQA).

### NOTES

- Attach ductwork to roof curb. Flanges of duct rest on top of the curb. Support ductwork below the curb.
- Thru the curb utilities are available. Contact your York distributor or Provent directly.



(4) #10 TEK SCREWS



**PROFILE DETAIL**



3847 WABASH DRIVE  
MIRA LOMA, CA 91752

PHONE (951) 685-1101  
FAX (619) 872-9799

SUBMITTED TO: \_\_\_\_\_  
COMPANY: \_\_\_\_\_  
JOB NAME: \_\_\_\_\_  
EQUIPMENT: \_\_\_\_\_  
NOTES: \_\_\_\_\_

FORM NO:  
CBISC-05

DATE:  
4/25/2022

PART NUMBER:

-

REV:  
3

DRAWN BY:  
FMM