

For wood, concrete and steel attachment see Roof Anchorage Detail, Form No. CB-62.
 Welded isolation springs housing are standard. For bolted spring housing, neoprene pads and spring cups see Weldment and Bolting Detail, Form No. CB-61

CALCULATED VIBRATION ISOLATION ROOF CURBS SUNCHOICE UNITS

AV 15-18, AD 15-18, AH 15, AL 15, HV 13

PROVENT P/N	A	B	EST. WEIGHT
CBISCSAV151818**	8"	18"	556 Lbs
CBISCSAV151821**	11"	21"	606 Lbs
CBISCSAV151824**	14"	24"	656 Lbs

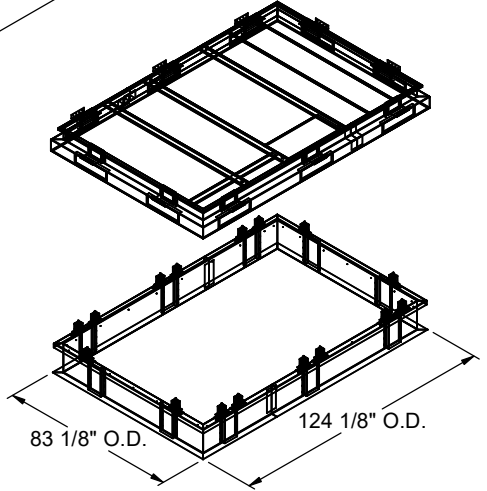
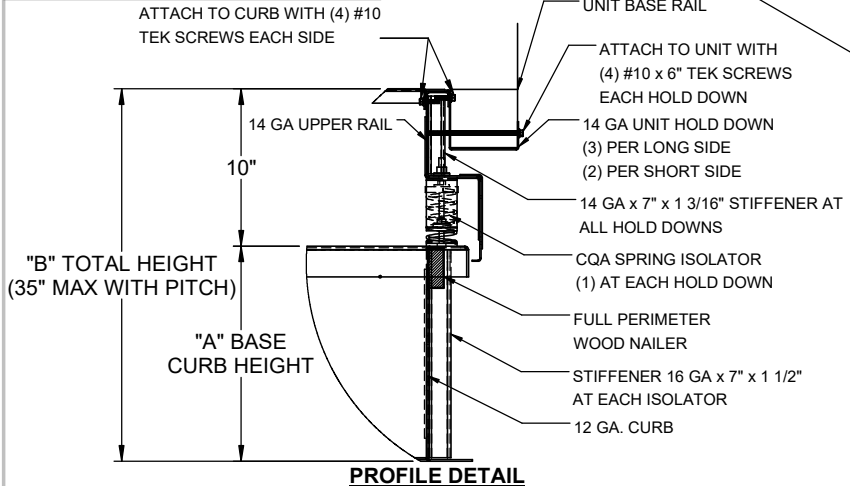
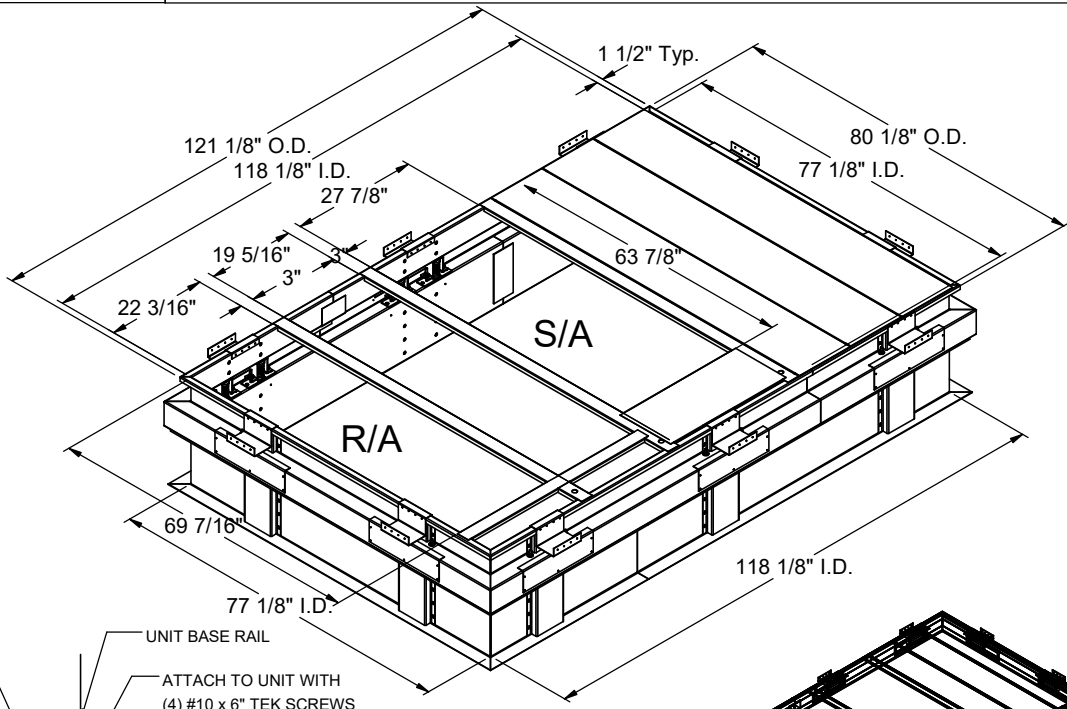
**Note: Spring configuration must be added to part number at time of order

Weight of upper portion supported by spring isolators = 295 Lbs.

Meets seismic requirements for the following codes:
 CBC 2022
 IBC 2021

- FEATURES**
- Roof curb base 12 ga.
 - Roof curb upper rail 14 ga.
 - Fully welded construction.
 - Gasketing package provided.
 - Heat treated wood nailer provided.
 - Insulated deck pans provided.
 - Pitched curbs and taller curbs are available.
 - CalDyn OSHPd pre-approved seismic restraints. (OPM-0401-13), (CQA).

- NOTES**
- Attach ductwork to roof curb. Flanges of duct rest on top of the curb, support ductwork below the curb.
 - Thru the curb utilities are available. Contact your York distributor or Provent directly.



3847 WABASH DRIVE
 MIRA LOMA, CA 91752
 PHONE (951) 685-1101
 FAX (619) 872-9799

SUBMITTED TO: _____
 COMPANY: _____
 JOB NAME: _____
 EQUIPMENT: _____
 NOTES: _____

FORM NO:
 CBISC-12
 DATE:
 8/14/2023

PART NUMBER:
 -
 REV:
 3
 DRAWN BY:
 FMM