

For wood, concrete and steel attachment see Roof Anchorage Detail, Form No. CB-62.

Welded isolation springs housing are standard. For bolted spring housing, neoprene pads and spring cups see Weldment and Bolting Detail, Form No. CB-61

VIBRATION ISOLATION ROOF CURBS SUNCHOICE UNITS

AV 20-25

PROVENT P/N	A	B	EST. WEIGHT
CBISCSAV202518**	8"	18"	615 Lbs
CBISCSAV202521**	11"	21"	660 Lbs
CBISCSAV202524**	14"	24"	710 Lbs

**Note: Spring configuration must be added to part number at time of order

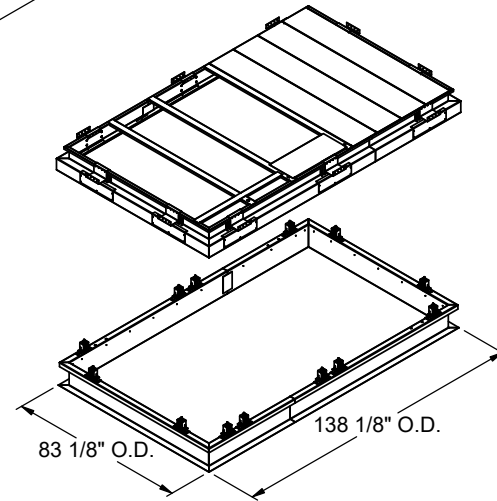
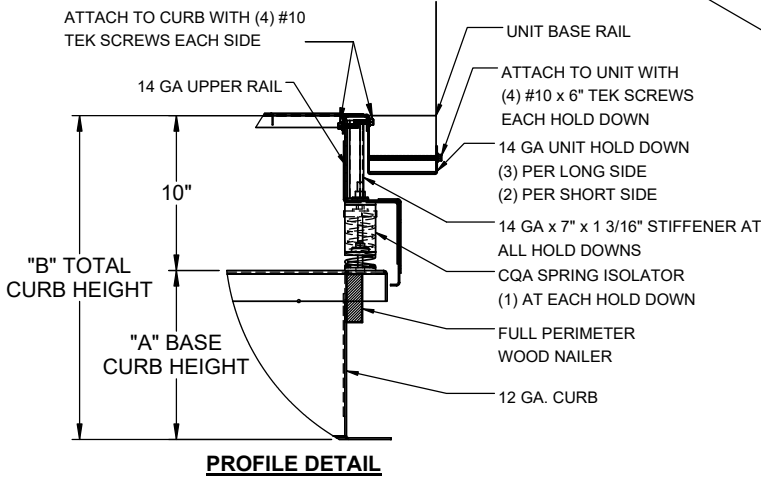
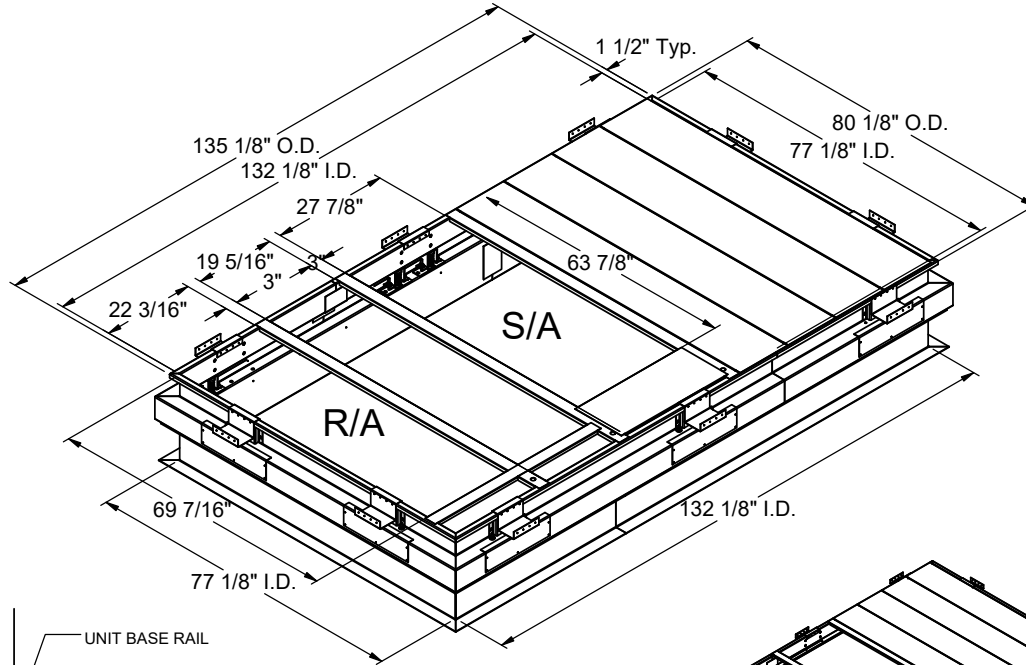
Meets seismic requirements for the following codes:
CBC 2019
IBC 2018

FEATURES

- Roof curb base 12 ga.
- Roof curb upper rail 14 ga.
- Fully welded construction.
- Gasketing package provided.
- Heat treated wood nailer provided.
- Insulated deck pans provided.
- Pitched curbs and taller curbs are available.
- CalDyn OSHPd pre-approved seismic restraints. (OPM-0401-13), (CQA).

NOTES

- Attach ductwork to roof curb. Flanges of duct rest on top of the curb, support ductwork below the curb.
- Thru the curb utilities are available. Contact you York distributor or Provent directly.



3847 WABASH DRIVE
MIRA LOMA, CA 91752

PHONE (951) 685-1101
FAX (619) 872-9799

SUBMITTED TO: _____
COMPANY: _____
JOB NAME: _____
EQUIPMENT: _____
NOTES: _____

FORM NO:
CBISC-13

DATE:
4/20/2022

PART NUMBER:
CBISCSAV2025 SERIES

REV:
1

DRAWN BY:
FMM