

For wood, concrete and steel attachment see Roof Anchorage Detail, Form No. CB-62.

Welded isolation springs housing are standard. For bolted spring housing, neoprene pads and spring cups see Weldment and Bolting Detail, Form No. CB-61

CALCULATED VIBRATION ISOLATION ROOF CURBS SUNCHOICE UNITS

AV 20-25, AD 20-25, AE 13-15, AW 13-15, AH 18-20, AL 18-20, HV 15-20

| PROVENT P/N | A | B | EST. WEIGHT |
|------------------|-----|-----|-------------|
| CBISCSAV202518** | 8" | 18" | 615 Lbs |
| CBISCSAV202521** | 11" | 21" | 660 Lbs |
| CBISCSAV202524** | 14" | 24" | 710 Lbs |

**Note: Spring configuration must be added to part number at time of order

Weight of upper portion supported by spring isolators = 325 Lbs.

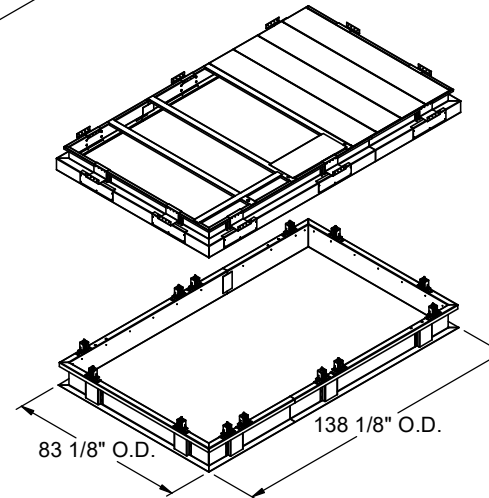
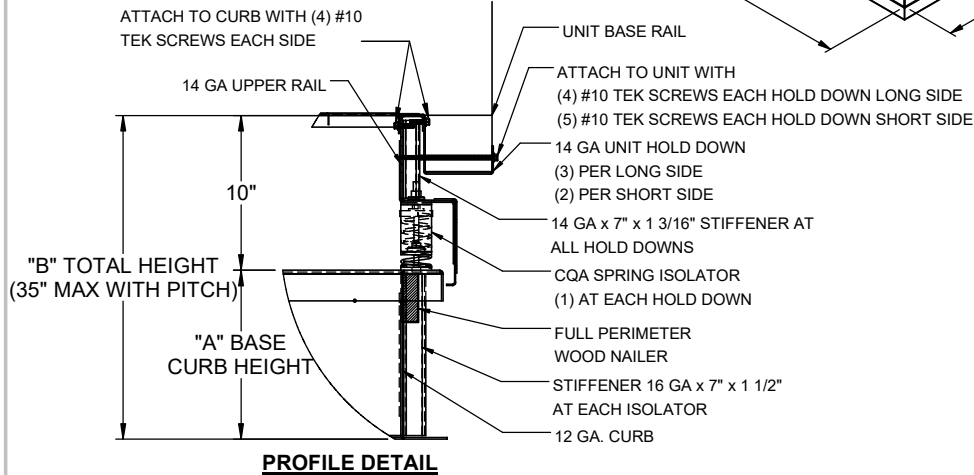
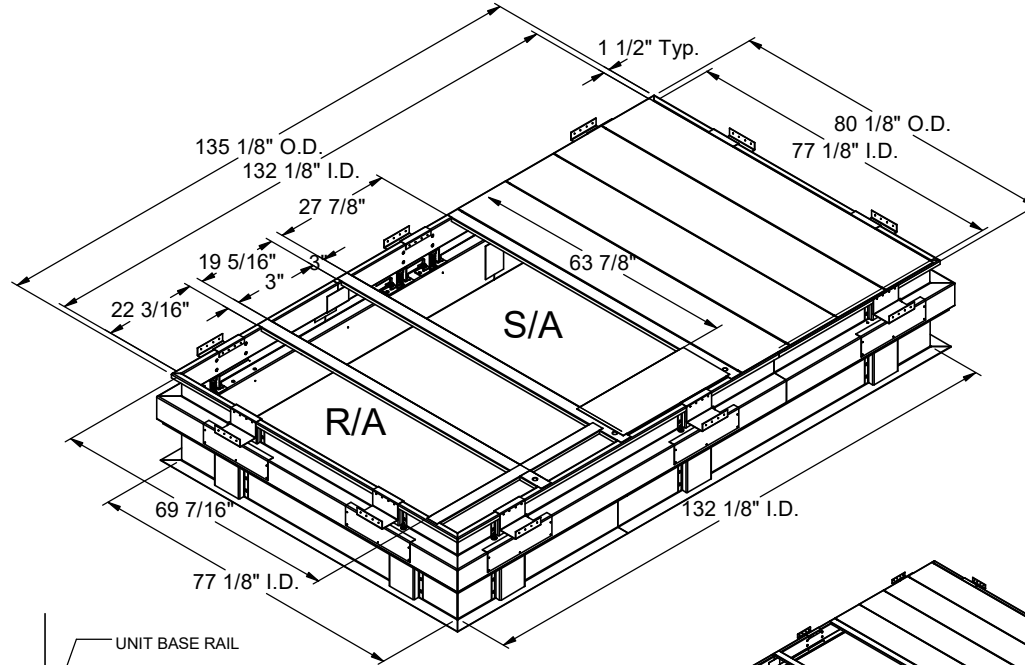
Meets seismic requirements for the following codes:
CBC 2022
IBC 2021

FEATURES

- Roof curb base 12 ga.
- Roof curb upper rail 14 ga.
- Fully welded construction.
- Gasketing package provided.
- Heat treated wood nailer provided.
- Insulated deck pans provided.
- Pitched curbs and taller curbs are available.
- CalDyn OSHPd pre-approved seismic restraints. (OPM-0401-13), (CQA).

NOTES

- Attach ductwork to roof curb. Flanges of duct rest on top of the curb, Support ductwork below the curb.
- Thru the curb utilities are available. Contact you York distributor or Provent directly.



3847 WABASH DRIVE
MIRA LOMA, CA 91752

PHONE (951) 685-1101
FAX (619) 872-9799

SUBMITTED TO: _____
COMPANY: _____
JOB NAME: _____
EQUIPMENT: _____
NOTES: _____

FORM NO:
CBISC-13

DATE:
8/14/2023

PART NUMBER:
CBISCSAV2025 SERIES

REV:
2

DRAWN BY:
FMM