

For wood, concrete and steel attachment see Roof Anchorage Detail, Form No. CB-62.  
 Welded isolation springs housing are standard. For bolted spring housing, neoprene pads and spring cups see Weldment and Bolting Detail, Form No. CB-61

## VIBRATION ISOLATION ROOF CURBS SUNCHOICE UNITS

AV 28

PROVENT P/N	A	B	EST. WEIGHT
CBISCSAV2818**	8"	18"	653 Lbs
CBISCSAV2821**	11"	21"	698 Lbs
CBISCSAV2824**	14"	24"	748 Lbs

\*\*Note: Spring configuration must be added to part number at time of order

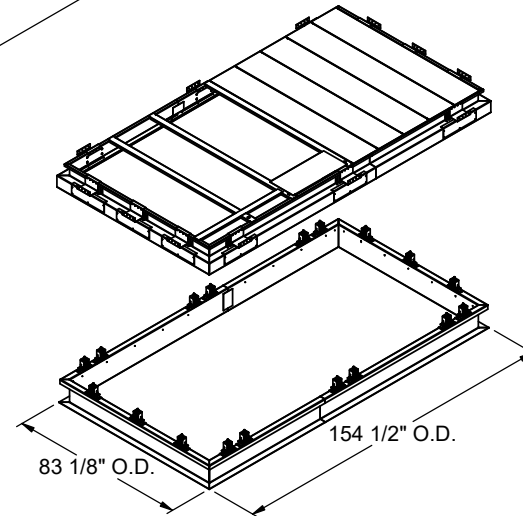
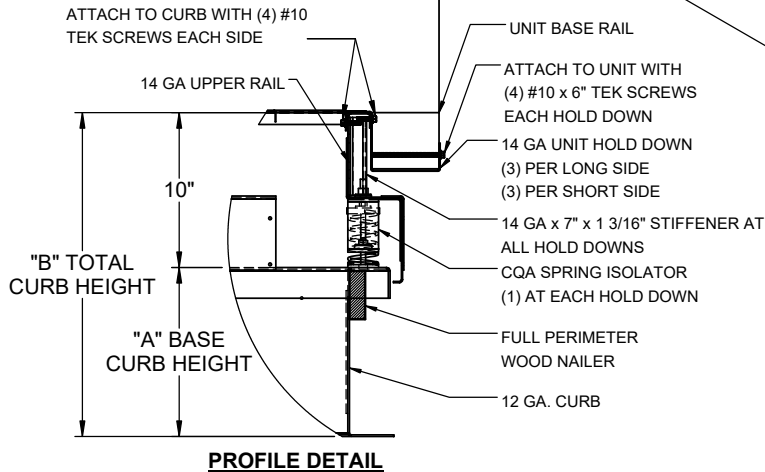
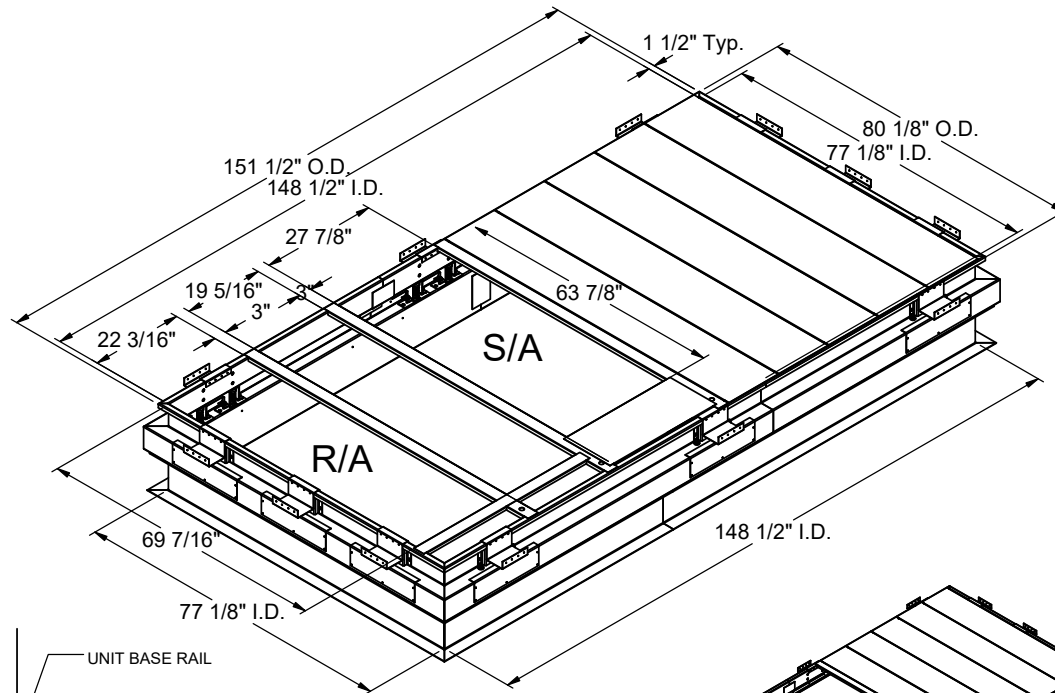
Meets seismic requirements for the following codes:  
 CBC 2019  
 IBC 2018

### FEATURES

- Roof curb base 12 ga.
- Roof curb upper rail 14 ga.
- Fully welded construction.
- Gasketing package provided.
- Heat treated wood nailer provided.
- Insulated deck pans provided.
- Pitched curbs and taller curbs are available.
- CalDyn OSHPd pre-approved seismic restraints. (OPM-0401-13), (CQA).

### NOTES

- Attach ductwork to roof curb. Flanges of duct rest on top of the curb, support ductwork below the curb.
- Thru the curb utilities are available. Contact your York distributor or Provent directly.



3847 WABASH DRIVE  
 MIRA LOMA, CA 91752  
 PHONE (951) 685-1101  
 FAX (619) 872-9799

SUBMITTED TO: \_\_\_\_\_  
 COMPANY: \_\_\_\_\_  
 JOB NAME: \_\_\_\_\_  
 EQUIPMENT: \_\_\_\_\_  
 NOTES: \_\_\_\_\_

FORM NO:  
 CBISC-14  
 DATE:  
 4/20/2022

PART NUMBER:  
 CBISCSAV28 SERIES  
 REV:  
 1  
 DRAWN BY:  
 FMM