

For wood, concrete and steel attachment see Roof Anchorage Detail, Form No. CB-62.

Welded isolation springs housing are standard. For bolted spring housing, neoprene pads and spring cups see Weldment and Bolting Detail, Form No. CB-61

CALCULATED VIBRATION ISOLATION ROOF CURBS SUNCHOICE UNITS

AV 28, AD 28, AE 18-23, AW 18-23, AH 25, AL 25, HV 25

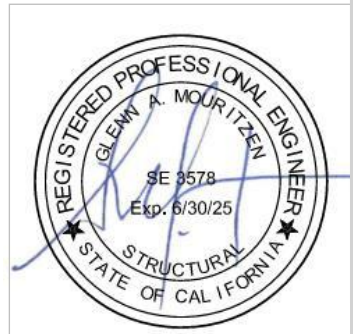
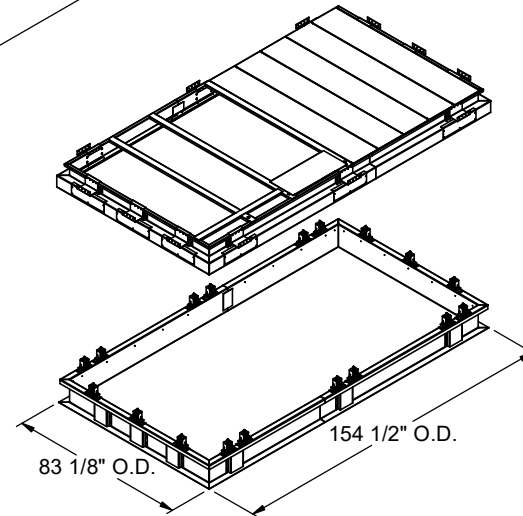
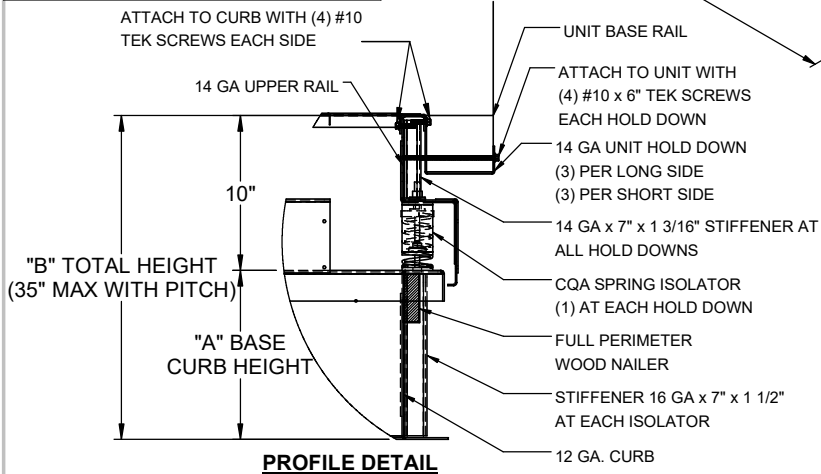
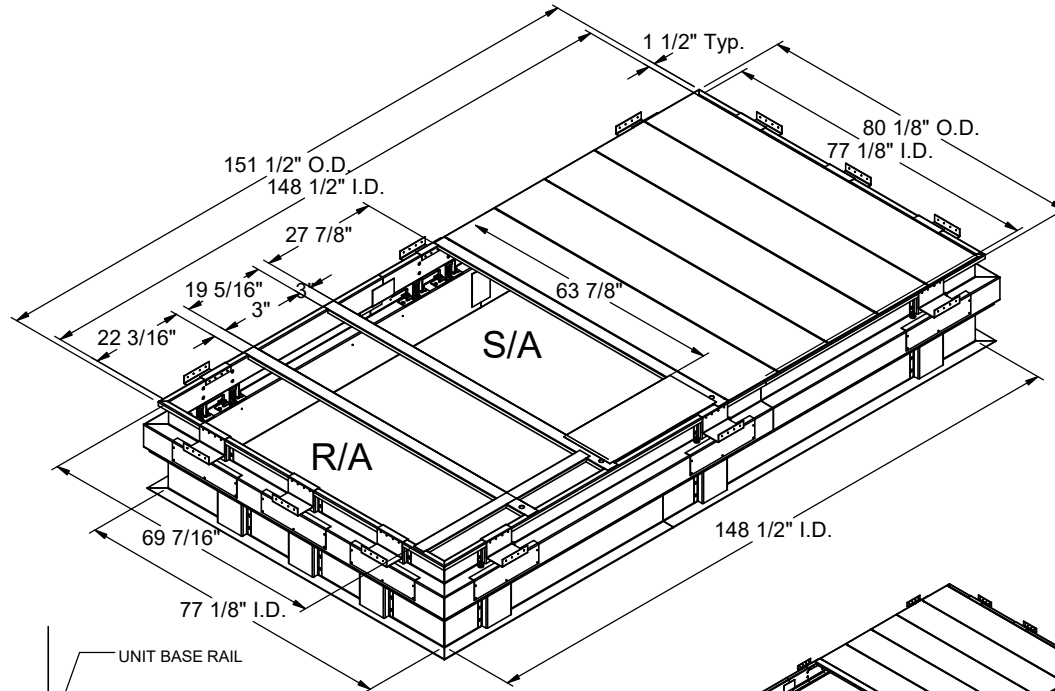
PROVENT P/N	A	B	EST. WEIGHT
CBISCSAV2818**	8"	18"	653 Lbs
CBISCSAV2821**	11"	21"	698 Lbs
CBISCSAV2824**	14"	24"	748 Lbs
**Note: Spring configuration must be added to part number at time of order			
Weight of upper portion supported by spring isolators= 365 Lbs.			
Meets seismic requirements for the following codes: CBC 2022 IBC 2021			

FEATURES

- Roof curb base 12 ga.
- Roof curb upper rail 14 ga.
- Fully welded construction.
- Gasketing package provided.
- Heat treated wood nailer provided.
- Insulated deck pans provided.
- Pitched curbs and taller curbs are available.
- CalDyn OSHPd pre-approved seismic restraints. (OPM-0401-13), (CQA).

NOTES

- Attach ductwork to roof curb. Flanges of duct rest on top of the curb, Support ductwork below the curb.
- Thru the curb utilities are available. Contact you York distributor or Provent directly.



3847 WABASH DRIVE
MIRA LOMA, CA 91752

PHONE (951) 685-1101
FAX (619) 872-9799

SUBMITTED TO: _____
COMPANY: _____
JOB NAME: _____
EQUIPMENT: _____
NOTES: _____

FORM NO:
CBISC-14

DATE:
8/16/2023

PART NUMBER:
CBISCSAV28 SERIES

REV:
2

DRAWN BY:
FMM