

For wood, concrete and steel attachment see Roof Anchorage Detail, Form No. CB-63.
 Welded isolation springs housing are standard. For bolted spring housing, neoprene pads and spring cups see Weldment and Bolting Detail, Form No. CB-61

VIBRATION ISOLATION ROOF CURBS YORK UNITS

SUN SELECT 28-35 TON

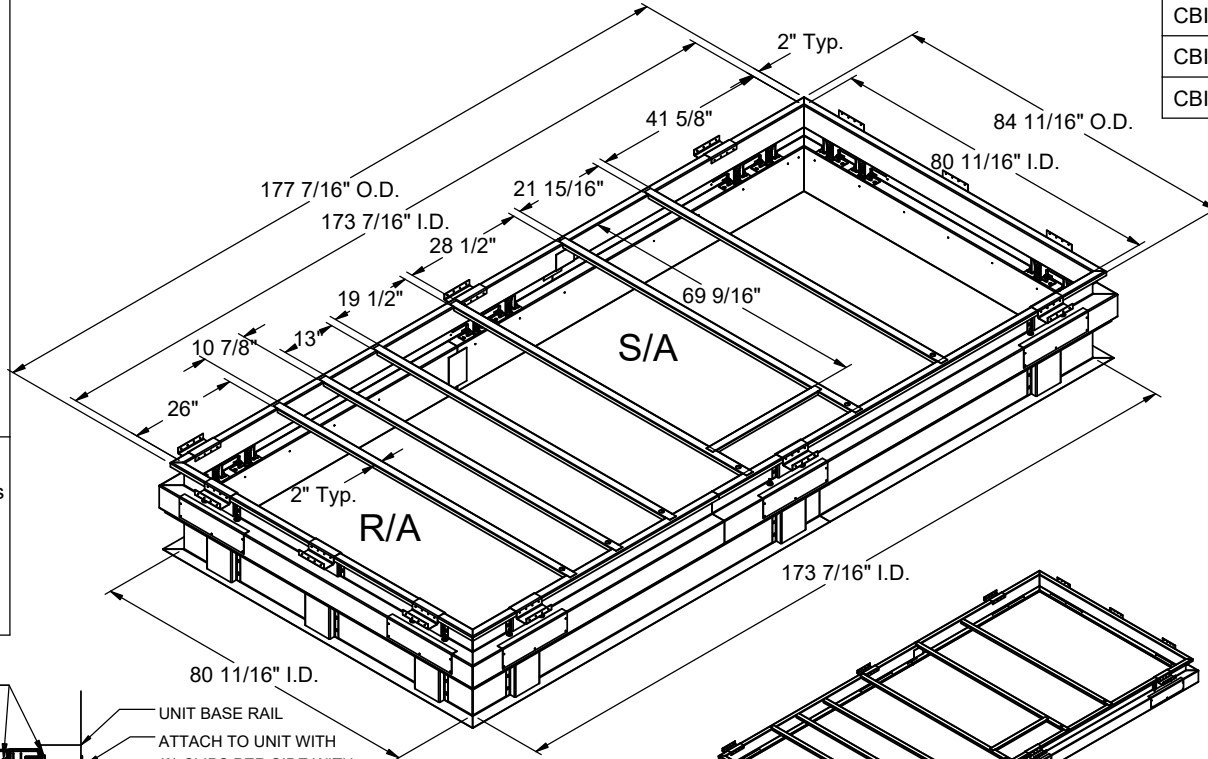
PROVENT P/N	A	B	EST. WEIGHT
CBISCSEL283518**	8"	18"	587 Lbs
CBISCSEL283521**	11"	21"	632 Lbs
CBISCSEL283524**	14"	24"	682 Lbs
CBISCSEL283528**	18"	28"	807 Lbs

FEATURES

- Roof curb base 12 ga.
- Roof curb upper rail 14 ga.
- Fully welded construction.
- Gasketing package provided.
- Heat treated wood nailer provided.
- Insulated deck pans provided.
- Pitched curbs and taller curbs are available.
- CalDyn OSHPd pre-approved seismic restraints. (OPM-0401-13), (CQA).

NOTES

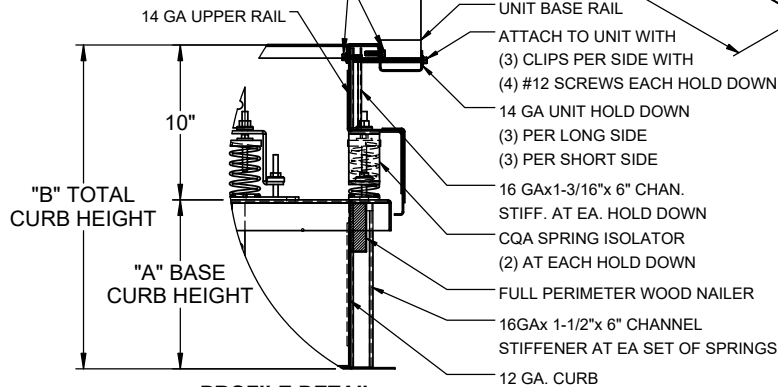
- Attach ductwork to roof curb. Flanges of duct rest on top of the curb, support ductwork below the curb.
- Thru the curb utilities are available. Contact you York distributor or Provent directly.



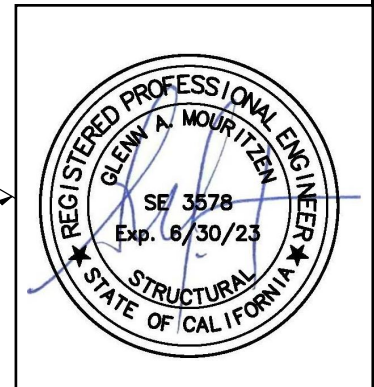
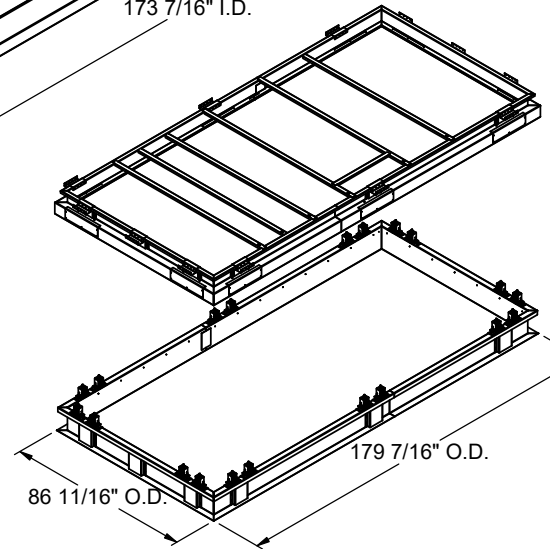
**Note: Spring configuration must be added to part number at time of order

Meets seismic requirements for the following codes:
 CBC 2022
 IBC 2021

ATTACH TO CURB WITH (4) #10 TEK SCREWS EACH SIDE



PROFILE DETAIL



3847 WABASH DRIVE
MIRA LOMA, CA 91752

PHONE (951) 685-1101
FAX (619) 872-9799

SUBMITTED TO: _____
 COMPANY: _____
 JOB NAME: _____
 EQUIPMENT: _____
 NOTES: _____

FORM NO:
CBISC-15

DATE:
1/31/2023

PART NUMBER:
CBISCSEL2835 SERIES

REV: -
DRAWN BY: JG