

For wood, concrete and steel attachment see Roof Anchorage Detail, Form No. CB-63.  
 Welded isolation springs housing are standard. For bolted spring housing, neoprene pads and spring cups see Weldment and Bolting Detail, Form No. CB-61

## VIBRATION ISOLATION ROOF CURBS YORK UNITS

SUN SELECT 40-50 TON

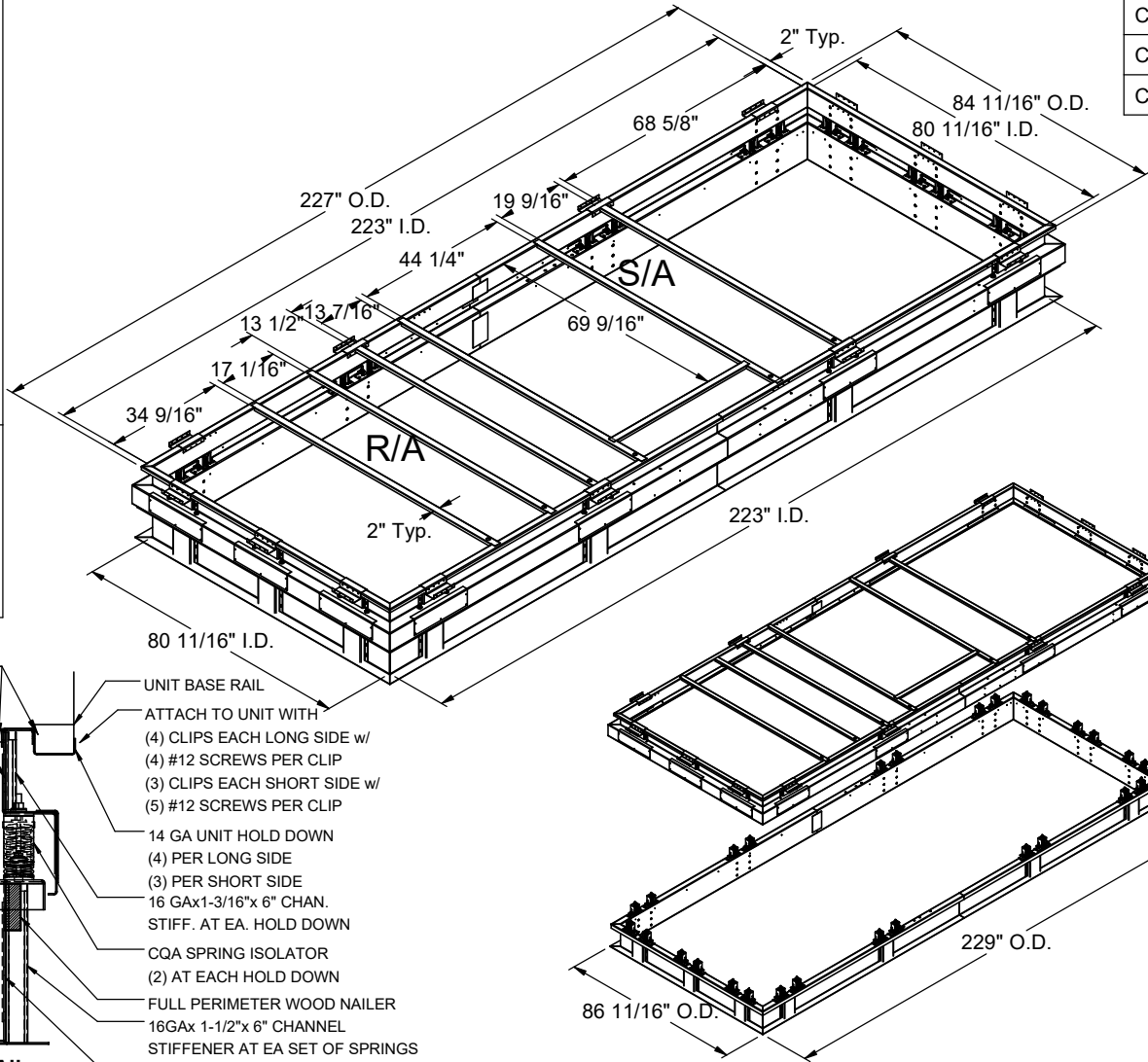
PROVENT P/N	A	B	EST. WEIGHT
CBISCSEL405018**	8"	18"	810 Lbs
CBISCSEL405021**	11"	21"	863 Lbs
CBISCSEL405024**	14"	24"	913 Lbs
CBISCSEL405028**	18"	28"	1,038 Lbs

### FEATURES

- Roof curb base 12 ga.
- Roof curb upper rail 14 ga.
- Fully welded construction.
- Gasketing package provided.
- Heat treated wood nailer provided.
- Insulated deck pans provided.
- Pitched curbs and taller curbs are available.
- CalDyn OSHPd pre-approved seismic restraints. (OPM-0401-13), (CQA).

### NOTES

- Attach ductwork to roof curb. Flanges of duct rest on top of the curb, Support ductwork below the curb.
- Thru the curb utilities are available. Contact you York distributor or Provent directly.



\*\*Note: Spring configuration must be added to part number at time of order

Meets seismic requirements for the following codes:  
 CBC 2022  
 IBC 2021

ATTACH TO CURB WITH (4) #10 TEK SCREWS EACH SIDE

14 GA UPPER RAIL

UNIT BASE RAIL

ATTACH TO UNIT WITH  
 (4) CLIPS EACH LONG SIDE w/  
 (4) #12 SCREWS PER CLIP  
 (3) CLIPS EACH SHORT SIDE w/  
 (5) #12 SCREWS PER CLIP

14 GA UNIT HOLD DOWN  
 (4) PER LONG SIDE  
 (3) PER SHORT SIDE  
 16 GAx1-3/16"x 6" CHAN.  
 STIFF. AT EA. HOLD DOWN

CQA SPRING ISOLATOR  
 (2) AT EACH HOLD DOWN  
 FULL PERIMETER WOOD NAILER  
 16GAx 1-1/2"x 6" CHANNEL  
 STIFFENER AT EA SET OF SPRINGS  
 12 GA. CURB

"B" TOTAL CURB HEIGHT

"A" BASE CURB HEIGHT

### PROFILE DETAIL



3847 WABASH DRIVE  
 MIRA LOMA, CA 91752

PHONE (951) 685-1101  
 FAX (619) 872-9799

SUBMITTED TO: \_\_\_\_\_  
 COMPANY: \_\_\_\_\_  
 JOB NAME: \_\_\_\_\_  
 EQUIPMENT: \_\_\_\_\_  
 NOTES: \_\_\_\_\_

FORM NO:  
 CBISC-16

DATE:  
 11/20/2024

PART NUMBER:  
 CBISCSEL4050 SERIES

REV:  
 1

DRAWN BY:  
 FMM