

For wood, concrete and steel attachment see Roof Anchorage Detail, Form No. CB-62.

VIBRATION ISOLATION ROOF CURBS YORK UNITS

Welded isolation springs housing are standard. For bolted spring housing, neoprene pads and spring cups see Weldment and Bolting Detail, Form No. CB-61

PROVENT P/N	A	B	EST. WEIGHT
CBISCSLU18018**	8"	18"	475 Lbs
CBISCSLU18021**	11"	21"	525 Lbs
CBISCSLU18024**	14"	24"	575 Lbs

**Note: Spring configuration must be added to part number at time of order

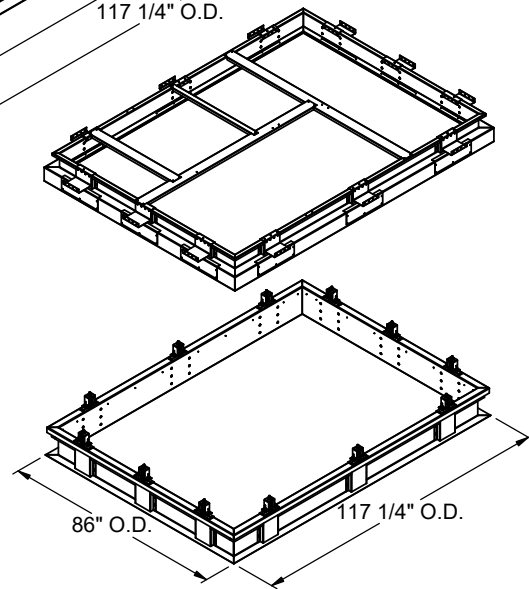
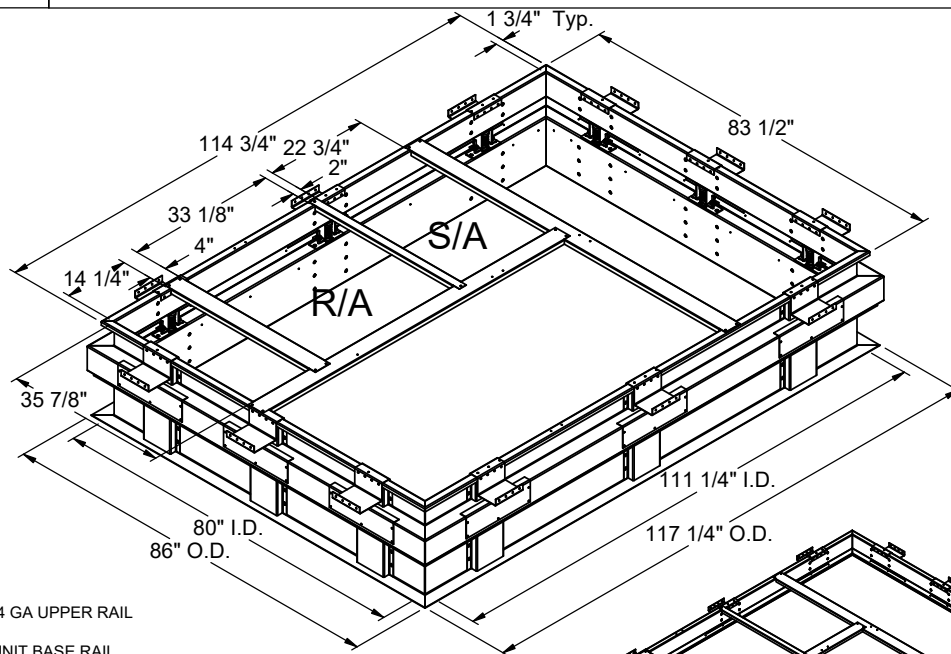
Meets seismic requirements for the following codes:
CBC 2019
IBC 2018

FEATURES

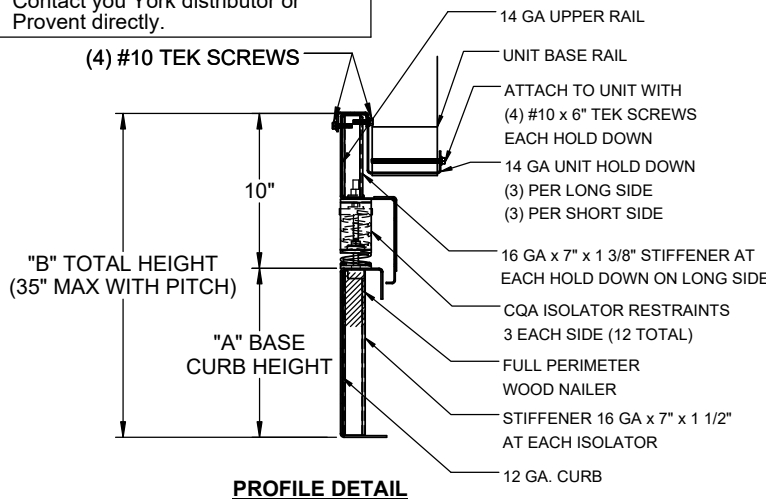
- Roof curb base 12 ga.
- Roof curb upper rail 14 ga.
- Fully welded construction.
- Gasketing package provided.
- Heat treated wood nailer provided.
- insulated deck pans provided.
- Pitched curbs and taller curbs are available.
- CalDyn OSHPd pre-approved seismic restraints. (OPM-0401-13), (CQA).

NOTES

- Attach ductwork to roof curb. Flanges of duct rest on top of the curb, Support ductwork below the curb.
- Thru the curb utilities are available. Contact you York distributor or Provent directly.



(4) #10 TEK SCREWS



PROFILE DETAIL



3847 WABASH DRIVE
MIRA LOMA, CA 91752

PHONE (951) 685-1101
FAX (619) 872-9799

SUBMITTED TO: _____
COMPANY: _____
JOB NAME: _____
EQUIPMENT: _____
NOTES: _____

FORM NO:
CBISC-07

DATE:
01/29/18

PART NUMBER:
-

REV:
1

DRAWN BY:
FMM