

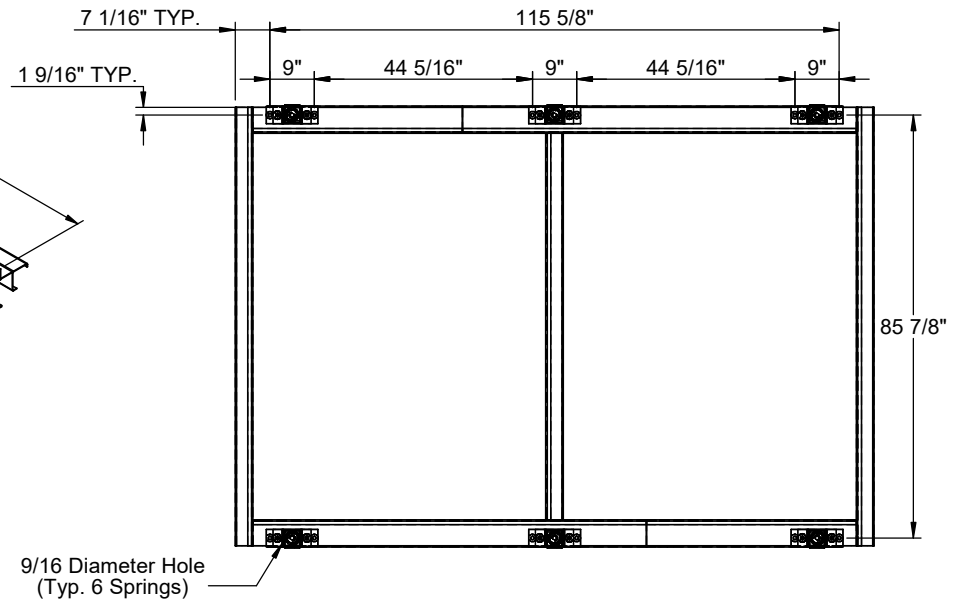
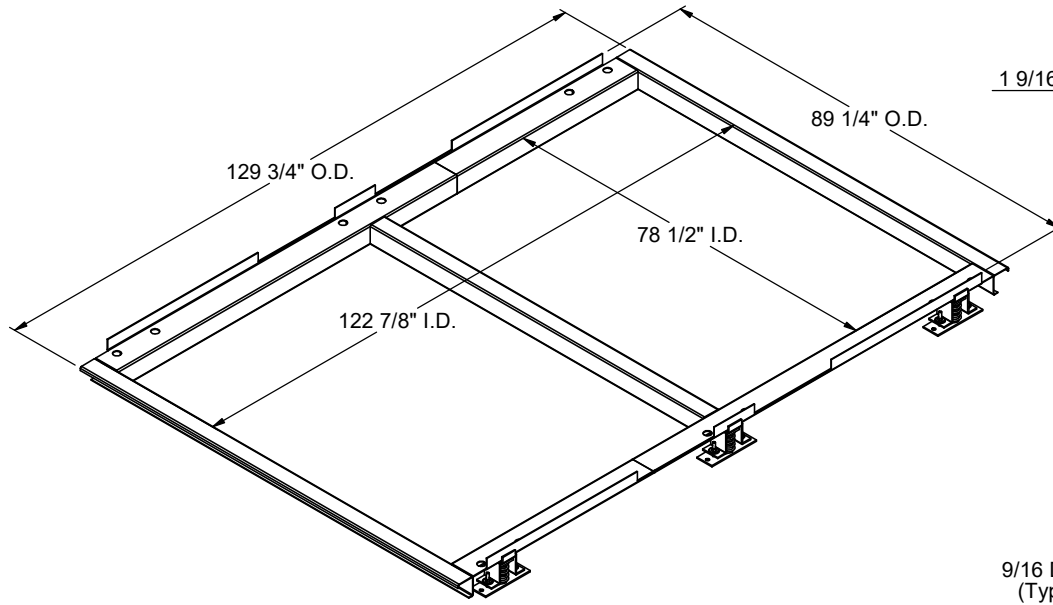
FEATURES

- Fully welded construction.
- 10 Ga. galvanized support frame.
- Estimated weight - 291 Lbs.
- Gasketing package provided.

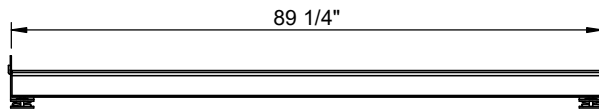
VIBRATION ISOLATION RAIL FOR HORIZONTAL YORK CHOICE UNITS- LOW PROFILE

AV, KV15-18; HV, WV13; AH, AL15, KH, KL15

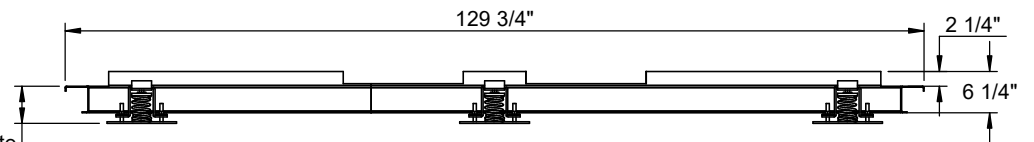
| Unit Model | Power Exhaust? | Provent P/N |
|------------------------|----------------|----------------|
| AV, KV15-18; HV, WV13 | NO | CBISHSAV15181 |
| AH15, AL15, KH15, KL15 | NO | CBISHSAV15182 |
| AV, KV15-18; HV, WV13 | YES | CBISHSAV1518P1 |
| AH15, AL15, KH15, KL15 | YES | CBISHSAV1518P2 |



Anchorage Location Detail



5 5/8" Approximate Oper. Height



3847 WABASH DR.
MIRA LOMA, CA 91752

PHONE (951) 685-1101
FAX (619) 872-9799

SUBMITTED TO: _____
COMPANY: _____
JOB NAME: _____
EQUIPMENT: _____
NOTES: _____

FORM NO:
CBISH-124

PART NUMBER:
CBISHSAV1518 SERIES

DATE:
2/6/2025

REV:
3

DRAWN BY:
CNG