

FEATURES

- Roof curb perimeter made of galvanized steel.
- Gasketing package provided.
- Heat treated wood nailer provided.
- Corner flanges are pre-threaded for easy bolt on assembly.
- Pitched, adjustable pitch/adjustable height, welded, different height, isolation and calculated curbs are available.

NOTES

- Attach ductwork to roof curb. Flanges of duct rest on top of curb. Support ductwork below the curb.
- Calculated curb kit only needs attachment from unit to curb. (Curb corner assembly already conforms.)

KNOCK-DOWN ROOF CURBS FOR YORK UNITS

ZR, XN, XP 036-060
ZE, ZF 036-072

ProVent P/N

- CBKDSUN367208
- CBKDSUN367211
- CBKDSUN367214
- CBKDSUN367224

A

- 8"
- 11"
- 14"
- 24"

WEIGHT

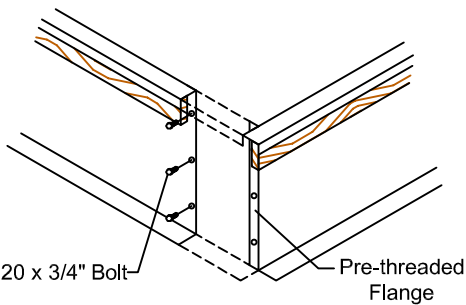
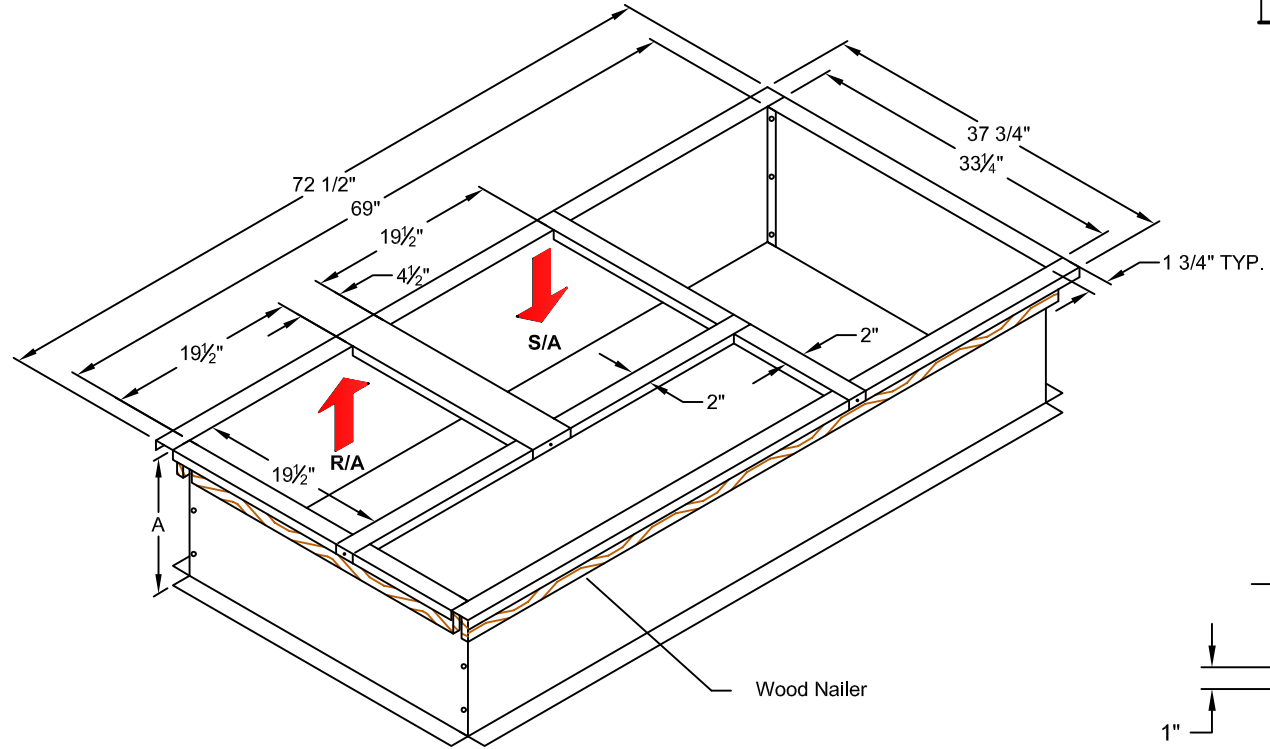
- 67 Lbs
- 79 Lbs
- 91 Lbs
- 132 Lbs

SEISMIC KIT P/N

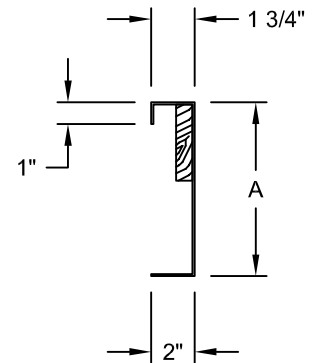
KDKITSUN3672

When conforming to CBC 2022 and IBC 2021, include optional seismic kit.

Available on 8" - 14".



CORNER DETAIL



CROSS SECTION DETAIL



3847 WABASH DRIVE
MIRA LOMA, CA 91752

PHONE (951) 685-1101
FAX (619) 498-9247

SUBMITTED TO: _____
COMPANY: _____
JOB NAME: _____
EQUIPMENT: _____
NOTES: _____

FORM NO:

CBKD-102

DATE:

10/2/23

REV:

5

PART NUMBER:

CBKDSUN3672 SERIES

DRAWN BY:

CNG