

FEATURES

- Roof curb perimeter made of 16 ga. galvanized steel.
- Gasketing package provided.
- Heat treated wood nailer provided.
- Corner flanges are pre-threaded for easy bolt on assembly.
- Pitched, adjustable pitch/adjustable height, welded, different height, isolation and calculated curbs are available.

NOTES

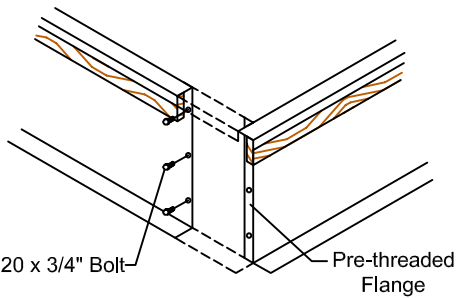
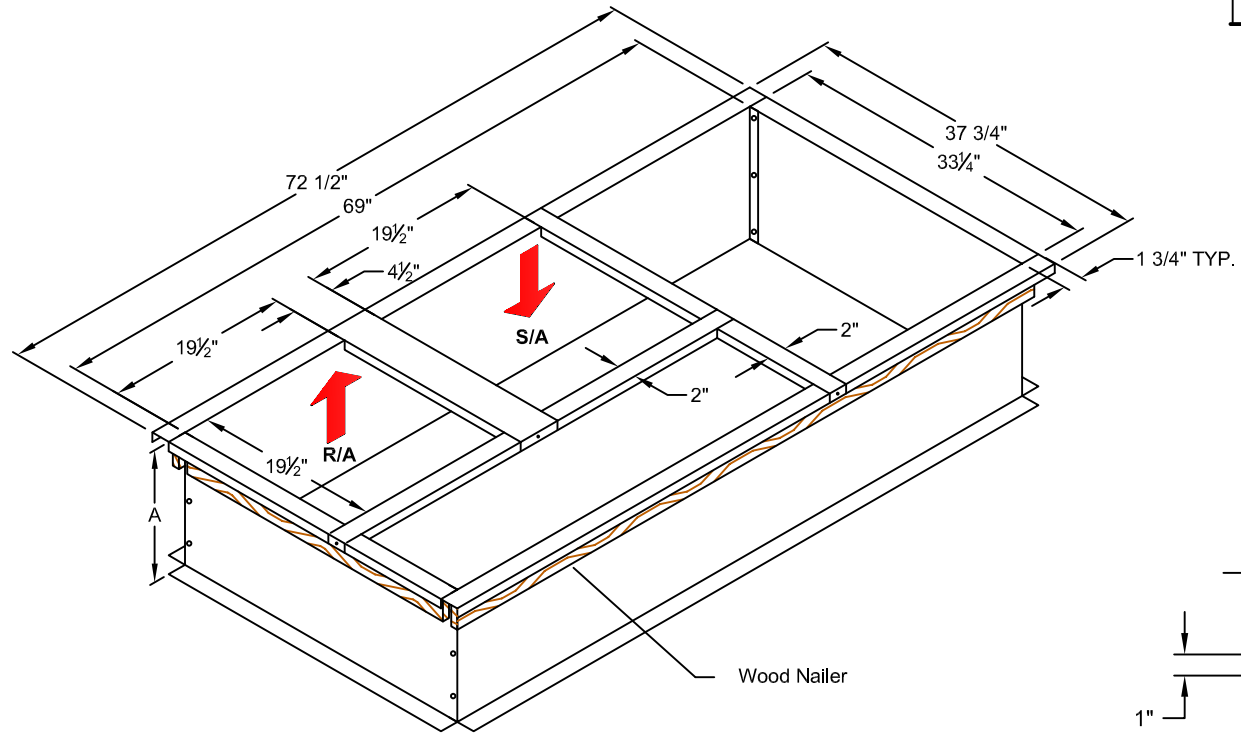
- Attach ductwork to roof curb. Flanges of duct rest on top of curb. Support ductwork below the curb.
- Calculated curb kit only needs attachment from unit to curb. (Curb corner assembly already conforms.)

KNOCK-DOWN ROOF CURBS FOR YORK UNITS

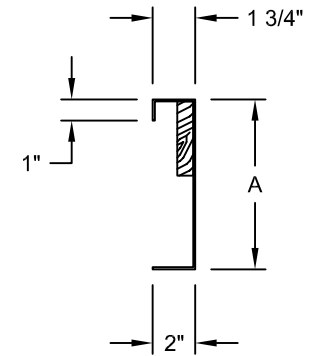
**ZR, XN, XP 036-060
ZE, ZF 036-072**

| ProVent P/N | A | WEIGHT | SEISMIC KIT P/N |
|---------------|-----|---------|-----------------|
| CBKDSUN367208 | 8" | 67 Lbs | KDKITSUN3672 |
| CBKDSUN367211 | 11" | 79 Lbs | |
| CBKDSUN367214 | 14" | 91 Lbs | |
| CBKDSUN367224 | 24" | 132 Lbs | |

When conforming to CBC 2019 and IBC 2018, include optional seismic kit.
Available on 8" - 14".



CORNER DETAIL



CROSS SECTION DETAIL



3847 WABASH DRIVE
MIRA LOMA, CA 91752

PHONE (951) 685-1101
FAX (619) 498-9247

SUBMITTED TO: _____
COMPANY: _____
JOB NAME: _____
EQUIPMENT: _____
NOTES: _____

FORM NO:
CBKD-102

DATE:
2/3/2020

REV:
3

PART NUMBER:
CBKDSUN3672 SERIES

DRAWN BY:
CNG