

For wood, concrete and steel attachments see Roof Anchorage Detail, Form Nos. CB-60.

Will conform to seismic code requirements for knock-down or pre-assembled application. (Contact factory for assembled version.)

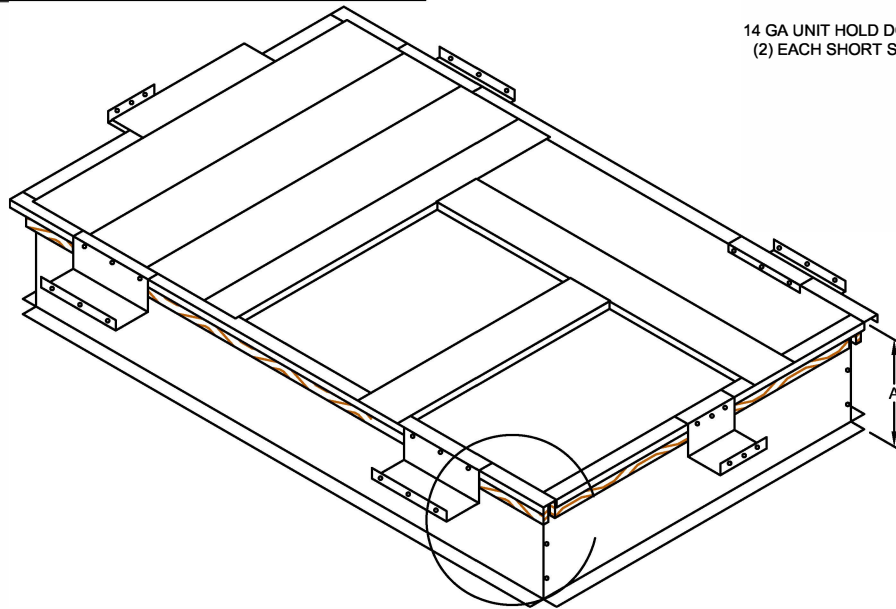
STRUCTURALLY CALCULATED HOLD DOWN CLIPS FOR KNOCK-DOWN ROOF CURBS FOR YORK UNITS

**ZX08-14; XX08-12; XYA7; ZYA7
ZY07-12; XY07-09; ZL08-14**

ProVent P/N	A	WEIGHT
CBKDPRL08	8"	115 Lbs
CBKDPRL11	11"	129 Lbs
CBKDPRL14	14"	144 Lbs

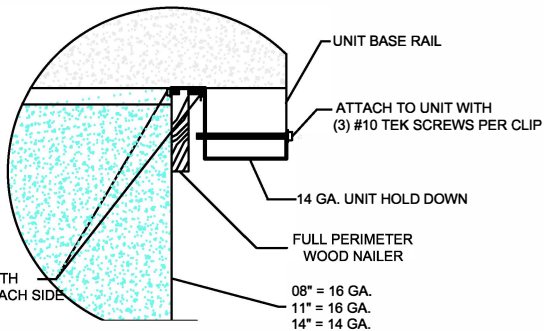
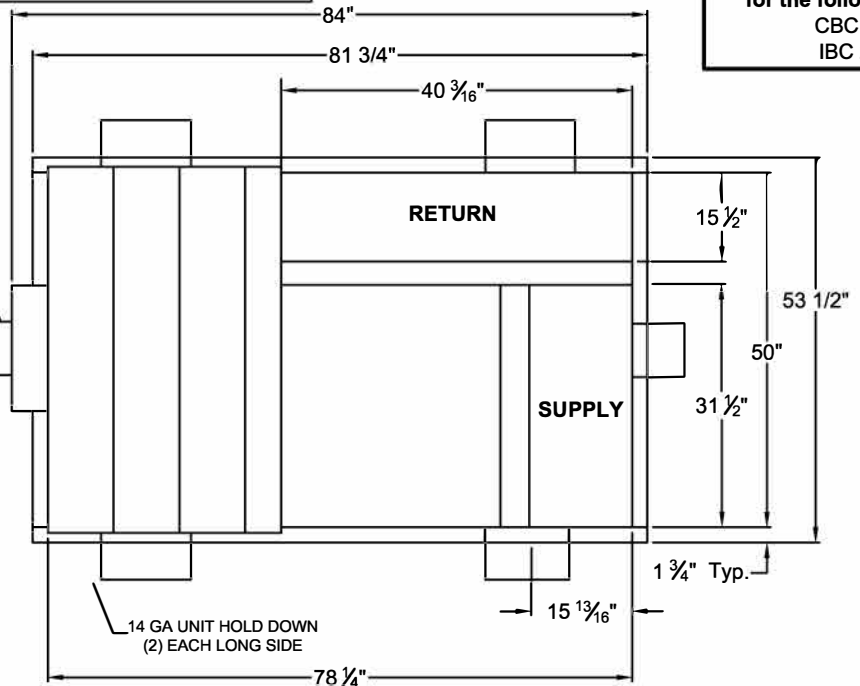
SEISMIC KIT P/N	WEIGHT
KDKITPRL	60 Lbs

Meets seismic requirements for the following codes:
CBC 2019
IBC 2018

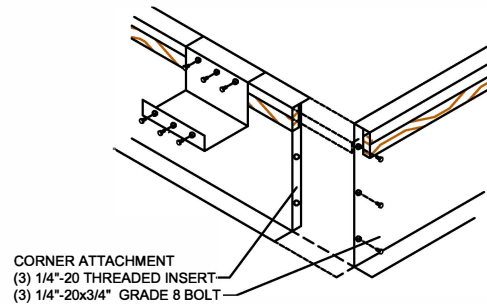


14 GA UNIT HOLD DOWN
(2) EACH SHORT SIDE

7 Typ"



HOLD DOWN DETAIL



CORNER & HOLD DOWN DETAIL



3847 WABASH DRIVE
MIRA LOMA, CA 91725

PHONE (951) 685-1101
FAX (619) 872-9799

SUBMITTED TO: _____
COMPANY: _____
JOB NAME: _____
EQUIPMENT: _____
NOTES: _____

FORM NO:
CBKD-141

DATE:
9/9/2021

PART NUMBER:
KDKITPRL Series

REV:
7

DRAWN BY:
ALL