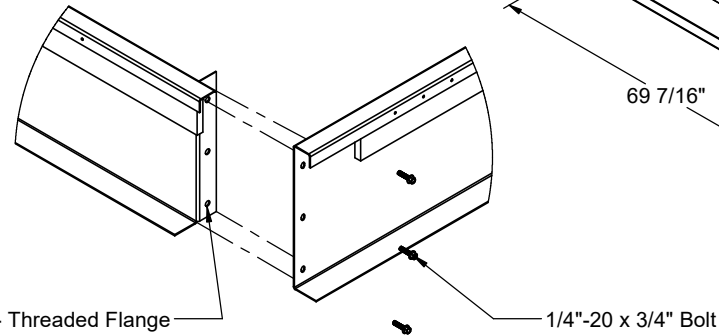
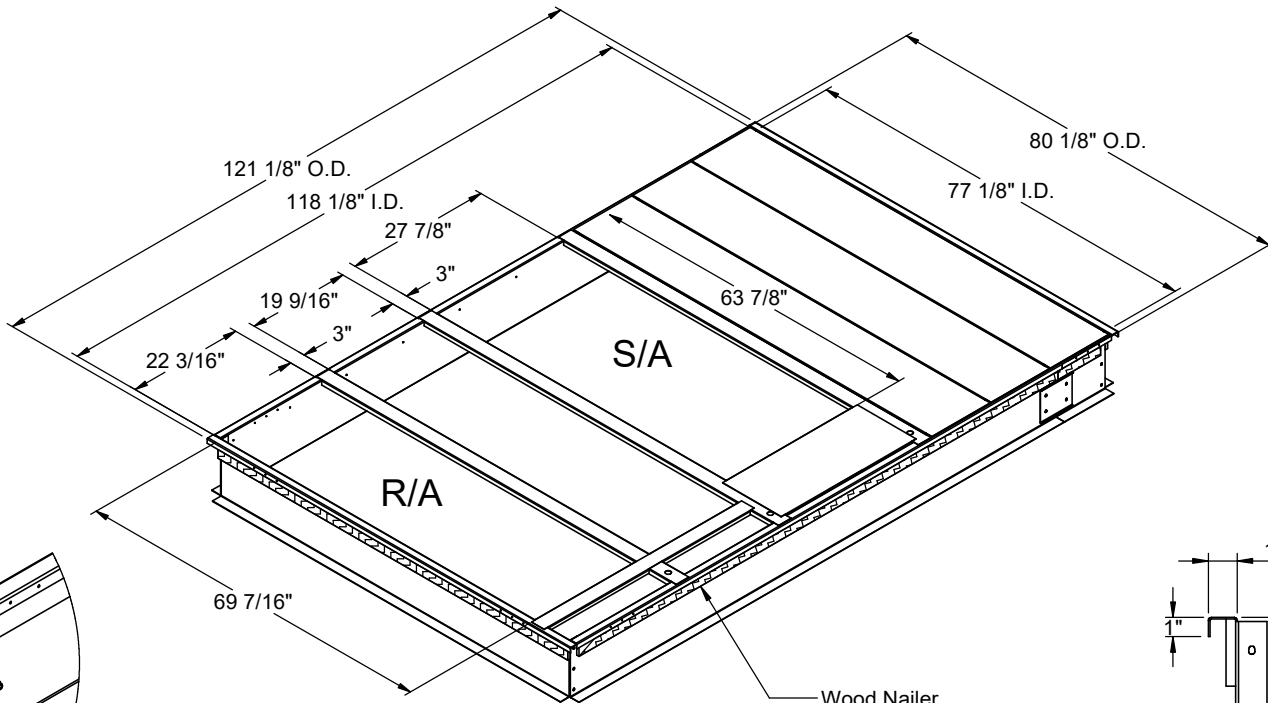


FEATURES	KNOCK-DOWN ROOF CURBS FOR YORK CHOICE UNITS	PROVENT P/N	A	EST. WEIGHT	Seismic Clip Kit PN
		<ul style="list-style-type: none"> <li>• Roof curb perimeter made of galvanized steel.</li> <li>• Gasketing package provided.</li> <li>• Heat treated wood nailer provided.</li> <li>• Corner flanges are pre-threaded for easy bolt on assembly.</li> <li>• Pitched, adjustable pitch/ adjustable height, welded, different height, isolation and calculated curbs are available.</li> </ul>	AV, KV15-18; AH, AL, KH, KL15; HV, WV13	CBKDSAV151808**	08"
		CBKDSAV151811**	11"	225 Lbs.	
		CBKDSAV151814**	14"	265 Lbs.	
		CBKDSAV151818**	18"	305 Lbs.	
		CBKDSAV151824**	24"	346 Lbs.	When conforming to CBC 2022 and IBC 2021, include optional seismic hold down clip kit.
					Available for 8" - 18"

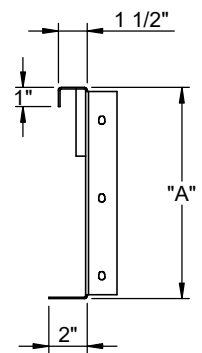
- Roof curb perimeter made of galvanized steel.
- Gasketing package provided.
- Heat treated wood nailer provided.
- Corner flanges are pre-threaded for easy bolt on assembly.
- Pitched, adjustable pitch/ adjustable height, welded, different height, isolation and calculated curbs are available.

**NOTES**

Attach ductwork to roof curb. Flanges of duct rest on top of curb. Support ductwork below the curb.



CORNER DETAIL



CROSS SECTION DETAIL

\*\*CBKDSAV151818 is 12Ga perimeter\*\*

	<b>3847 WABASH DRIVE MIRA LOMA, CA 91752</b>  <b>PHONE (951) 685-1101 FAX (619) 872-9799</b>	SUBMITTED TO: _____	FORM NO: _____	PART NUMBER: _____	
		COMPANY: _____	-	CBKDSAV1518 SERIES	
		JOB NAME: _____	DATE: 1/27/2025	REV: 6	DRAWN BY: CNG
		EQUIPMENT: _____			
		NOTES: _____			