

**FEATURES**

- Roof curb perimeter made of galvanized steel.
- Gasketing package provided.
- Heat treated wood nailer provided.
- Corner flanges are pre-threaded for easy bolt on assembly.
- Pitched, adjustable pitch/ adjustable height, welded, different height, isolation and calculated curbs are available.

**NOTES**

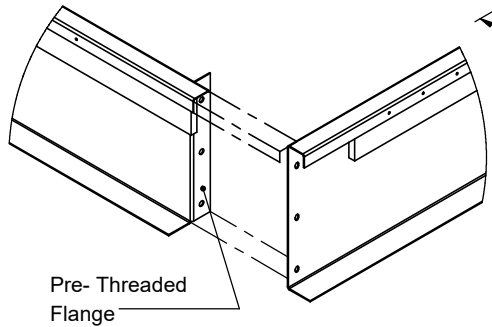
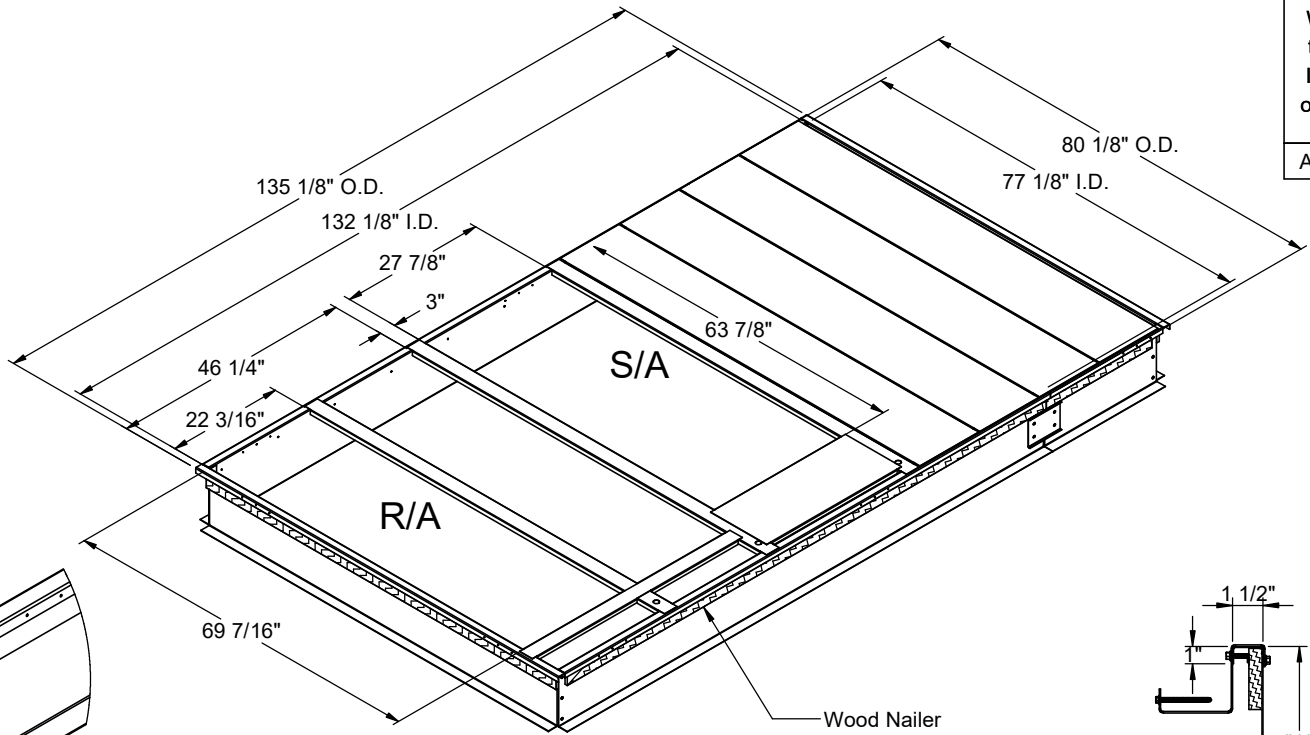
- Attach ductwork to roof curb. Flanges of duct rest on top of curb. Support ductwork below the curb.
- CBKDSAV202518 & CBKDSAV202524 will be 12GA perimeter

**KNOCK-DOWN ROOF CURBS FOR SUNCHOICE UNITS**

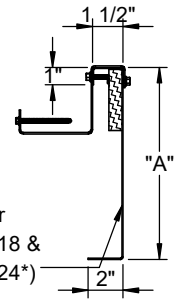
AV 20-25, AD20-25; AE13-15, AW13-15; AH18-20, AL18-20; HV15-20

PROVENT P/N	A	EST. WEIGHT	SEISMIC KIT P/N
CBKDSAV202508**	08"	220 Lbs.	KDKITSAV2025
CBKDSAV202511**	11"	250 Lbs.	
CBKDSAV202514**	14"	280 Lbs.	
CBKDSAV202518**	18"	400 Lbs.	
CBKDSAV202524**	24"	500 Lbs.	

When conforming to CBC 2022 and IBC 2021, include optional seismic kit.  
Available for 8" - 18"



**CORNER DETAIL**



**CROSS SECTION DETAIL**

**\*\*CBKDSAV202518 & 24 will be 12GA perimeter\*\***



3847 WABASH DRIVE  
MIRA LOMA, CA 91752  
PHONE (951) 685-1101  
FAX (619) 872-9799

SUBMITTED TO: \_\_\_\_\_  
COMPANY: \_\_\_\_\_  
JOB NAME: \_\_\_\_\_  
EQUIPMENT: \_\_\_\_\_  
NOTES: \_\_\_\_\_

FORM NO: -  
DATE: 8/25/2023

PART NUMBER: CBKDSAV2025 SERIES  
REV: 2  
DRAWN BY: FMM