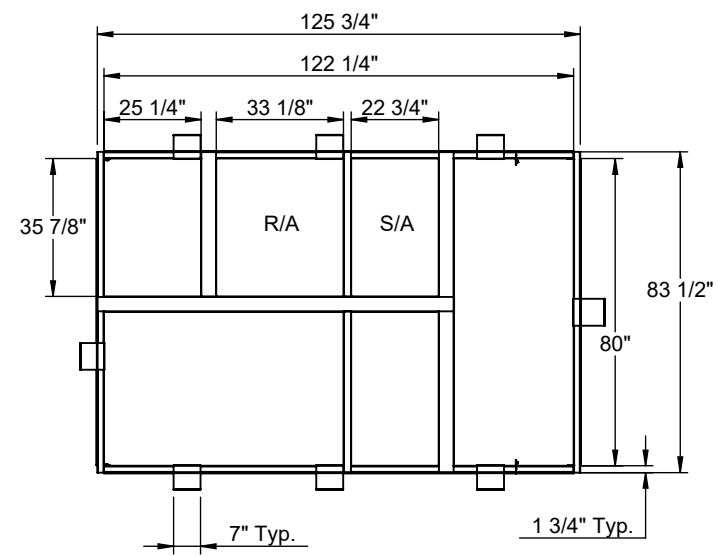
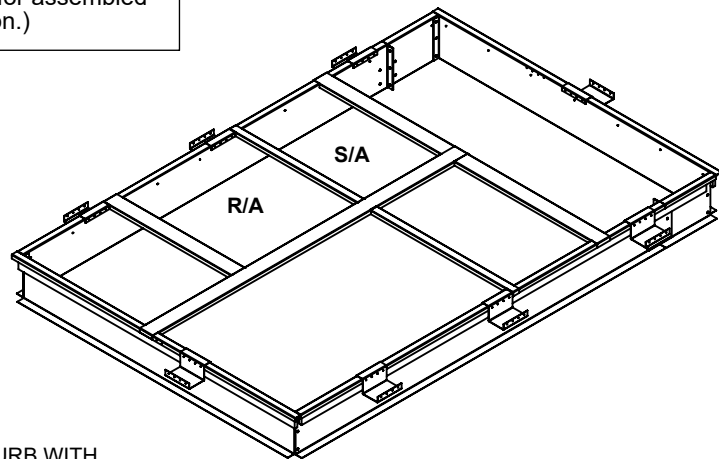


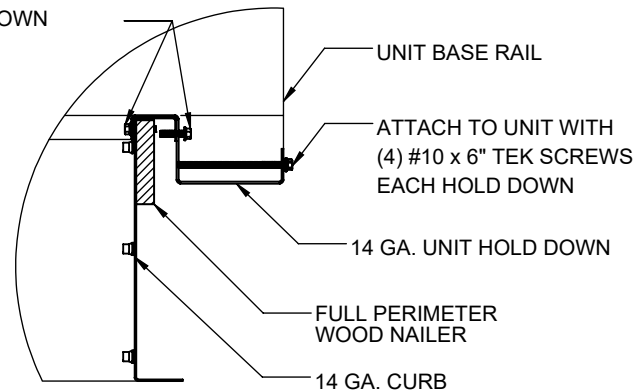
<p>For wood, concrete and steel attachments see Roof Anchorage Detail, Form Nos. CB-60.</p>	<p>STRUCTURALLY CALCULATED KNOCK-DOWN ROOF CURBS FOR YORK UNITS</p>	<p>PROVENT P/N</p>	<p>A</p>	<p>EST. WEIGHT</p>	<p>SEISMIC KIT P/N</p>
		<p>CBKDSLML183008</p>	<p>8"</p>	<p>125 Lbs.</p>	<p>KDKITSLM1830</p>
		<p>CBKDSLML183011</p>	<p>11"</p>	<p>139 Lbs.</p>	<p>Meets seismic requirements for the following codes: CBC 2019 IBC 2018</p>
<p>CBKDSLML183014</p>	<p>14"</p>	<p>154 Lbs.</p>			

Will conform to seismic code requirements for knock-down or pre-assembled application. (Contact factory for assembled version.)

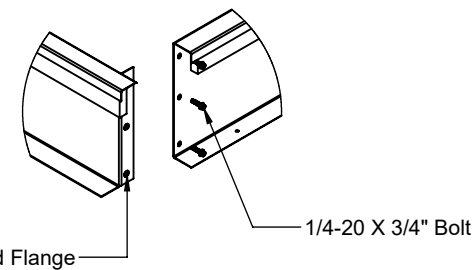
ZJ, ZR 180-300; XP 180-240
ZF 210-300; ZT 180-276



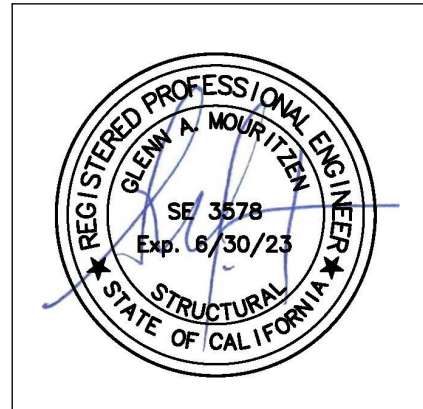
ATTACH TO CURB WITH (3) #10 x 3/4" TEK SCREWS EACH HOLD DOWN



HOLD DOWN DETAIL



CROSS SECTION DETAIL



	<p>3847 WABASH DRIVE MIRA LOMA, CA 91725</p>	<p>SUBMITTED TO: _____</p>	<p>FORM NO: CBKD-136</p>	<p>PART NUMBER: KDKITSLM1830</p>	
	<p>PHONE (951) 685-1101 FAX (619) 872-9799</p>	<p>COMPANY: _____</p>	<p>DATE: 9/9/2021</p>	<p>REV: 2</p>	<p>DRAWN BY: ALL</p>
		<p>JOB NAME: _____</p>			
		<p>EQUIPMENT: _____</p>			
		<p>NOTES: _____</p>			