

For wood, concrete and steel attachments see Roof Anchorage Detail, Form No. CB-25A.

Will conform to wind load code requirements for knock-down or pre-assembled application. (Contact factory for assembled version.)

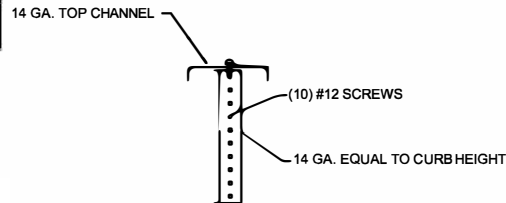
CALCULATED WIND ROOF CURBS FOR YORK UNITS

ProVent P/N	A	WEIGHT
80-265-5014	14"	139 Lbs
80-265-5018	18"	163 Lbs

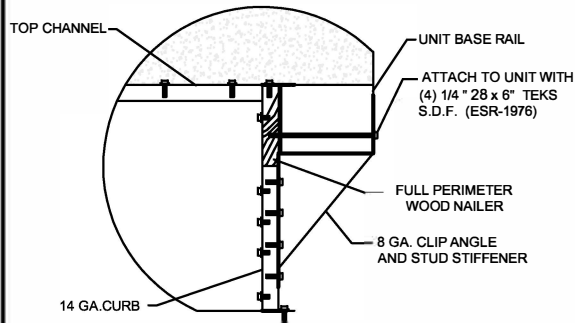
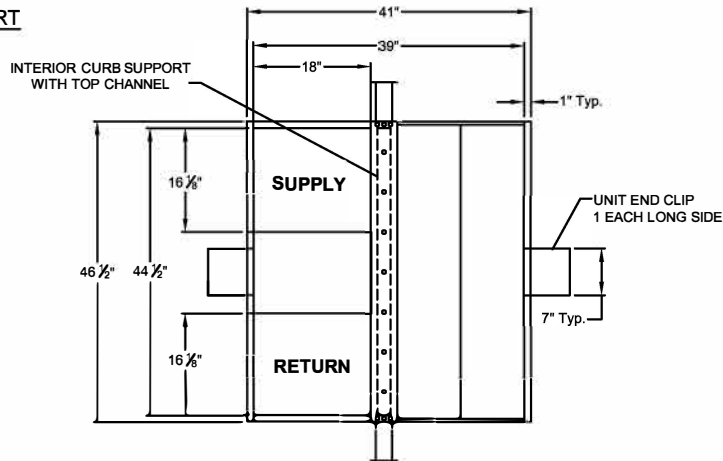
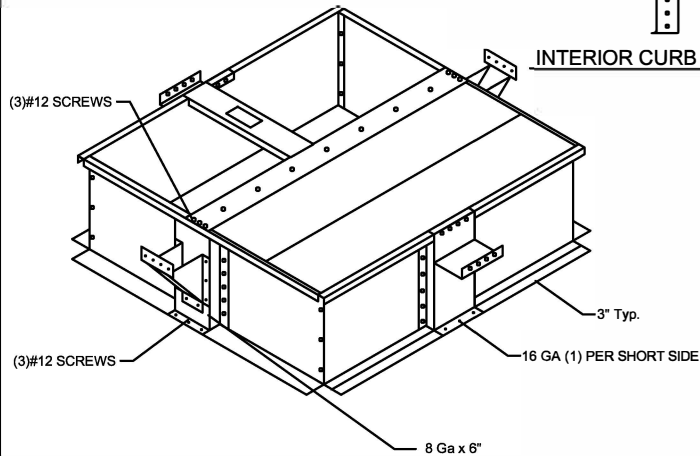
P***B ALL MODELS

Meets wind requirements for the following codes:
 FBC 2020
 based on ASCE 7-16.

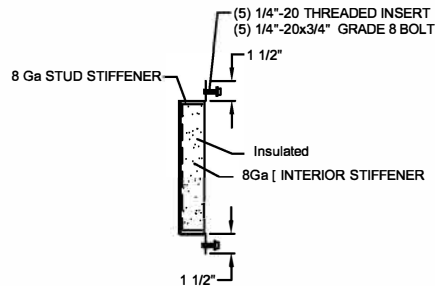
Wind:
 190 mph exposure D category III or IV building, max BLDG height: 60 ft
 Kzt=1.00 max



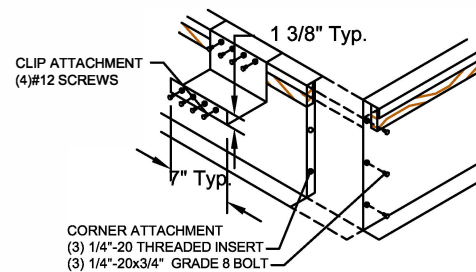
INTERIOR CURB SUPPORT



HOLD DOWN DETAIL



STUD STIFFENER



CORNER & END CLIP DETAIL



1625 DIPLOMAT DRIVE
 CARROLTON, TX 75006

PHONE (972) 247-7447
 FAX (972) 243-0940

SUBMITTED TO: _____
 COMPANY: _____
 JOB NAME: _____
 EQUIPMENT: _____
 NOTES: _____

FORM NO:
 CBKD-161A

DATE:
 3/29/2021

REV:
 1

PART NUMBER:
 80-265-50

DRAWN BY:
 ALL