

For wood, concrete and steel attachments see Roof Anchorage Detail, Form No. CB-60.

**STRUCTURALLY CALCULATED WELDED ROOF CURBS FOR YORK UNITS**

ProVent P/N	A	WEIGHT
CBWCSLU18008	8"	152 Lbs
CBWCSLU18011	11"	177 Lbs
CBWCSLU18014	14"	202 Lbs
CBWCSLU18024	24"	354 Lbs

ZF 180

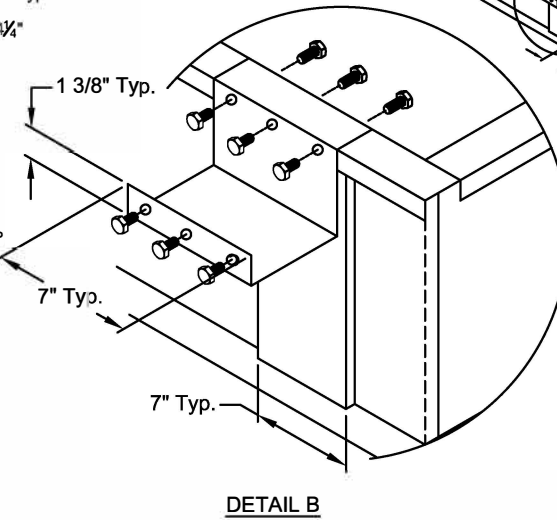
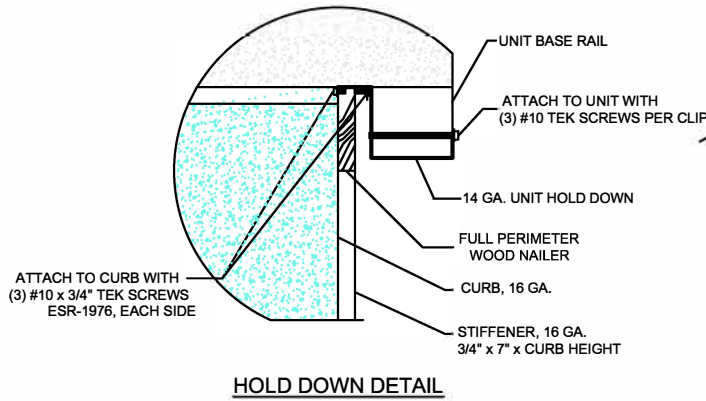
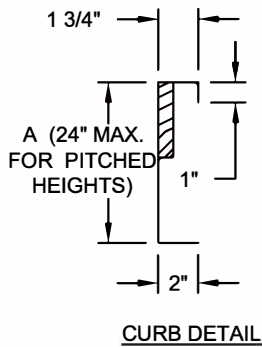
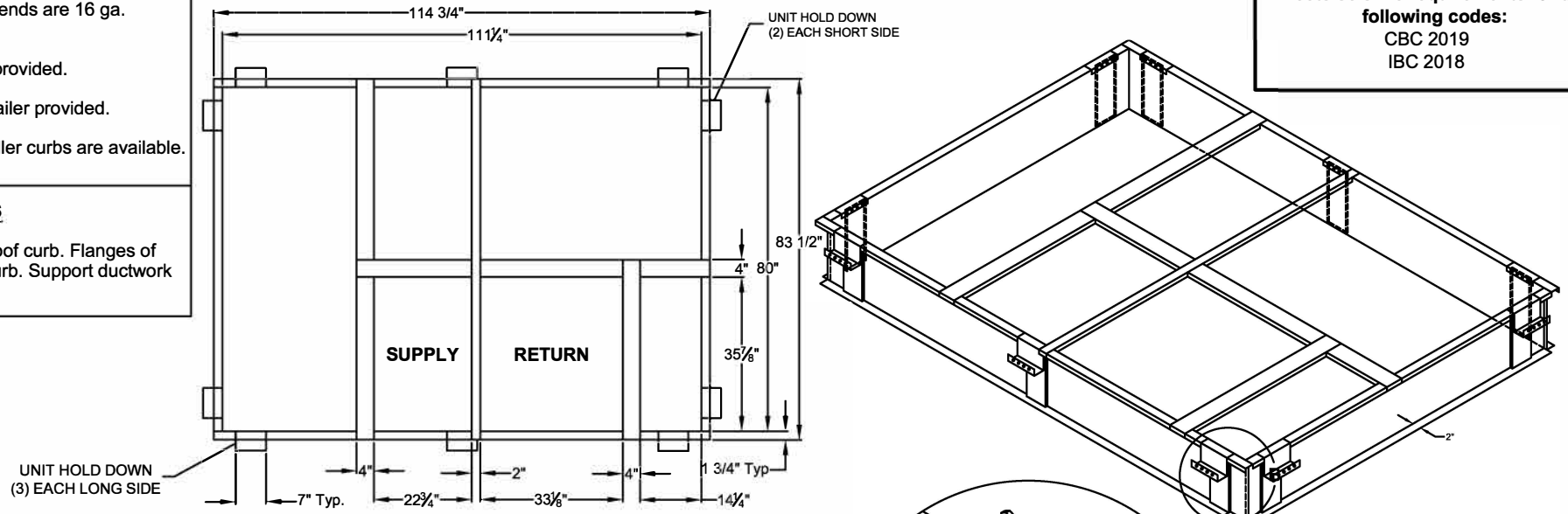
**FEATURES**

- Roof curb sides and ends are 16 ga. galvanized steel.
- Gasketing package provided.
- Heat treated wood nailer provided.
- Pitched curbs and taller curbs are available.

**NOTES**

- Attach ductwork to roof curb. Flanges of duct rest on top of curb. Support ductwork below the curb.

Meets seismic requirements for the following codes:  
 CBC 2019  
 IBC 2018



3847 WABASH DRIVE  
 MIRA LOMA, CA 91725  
 PHONE (951) 685-1101  
 FAX (619) 872-9799

SUBMITTED TO: \_\_\_\_\_  
 COMPANY: \_\_\_\_\_  
 JOB NAME: \_\_\_\_\_  
 EQUIPMENT: \_\_\_\_\_  
 NOTES: \_\_\_\_\_

FORM NO:  
 CBWC-114  
 DATE:  
 9/9/2021

REV:  
 8

PART NUMBER:  
 CBWCSLU180 SERIES  
 DRAWN BY:  
 ALL