

For wood, concrete and steel attachments see Roof Anchorage Detail, Form Nos. CB-60.

STRUCTURALLY CALCULATED WELDED ROOF CURBS FOR YORK UNITS

PROVENT P/N	A	EST. WEIGHT
CBWCPRS08	8"	128 Lbs.
CBWCPRS11	11"	139 Lbs.
CBWCPRS14	14	150 Lbs.
CBWCPRS24	24"	189 Lbs.

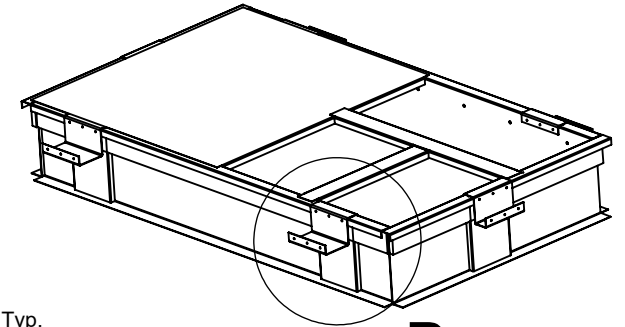
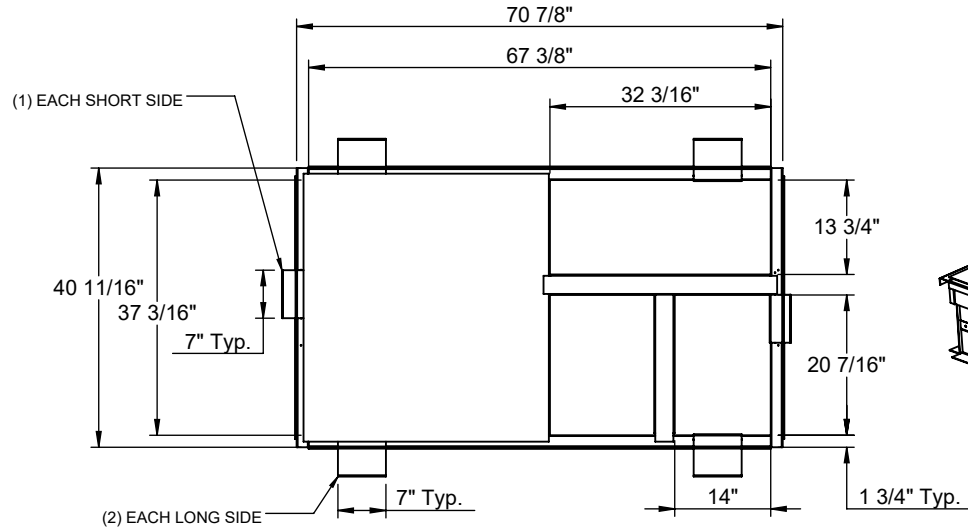
ZX 04-07, XX A7,
ZXA7, ZY, ZQ, XY, XQ, ZL 04-06

Meets seismic requirements for the following codes:
CBC 2019
IBC 2018

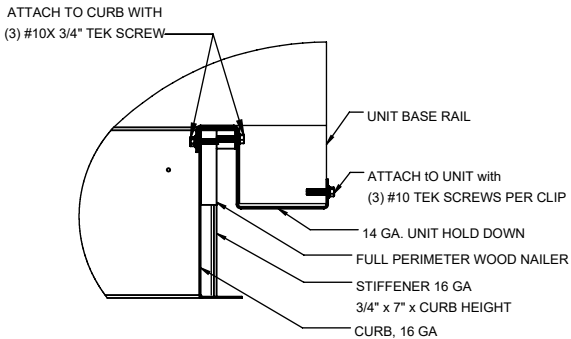
- FEATURES**
- Roof curb sides and ends are 16 Ga. galvanized steel.
 - Gasketing package provided.
 - Heat treated wood nailer provided.
 - Pitched curbs and taller curbs are available.

Notes

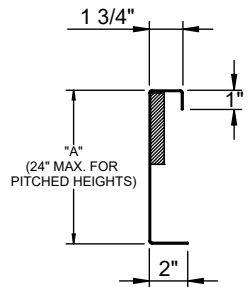
Attached ductwork to roof curb. Flanges of duct rest on top of curb. Support ductwork below the curb.



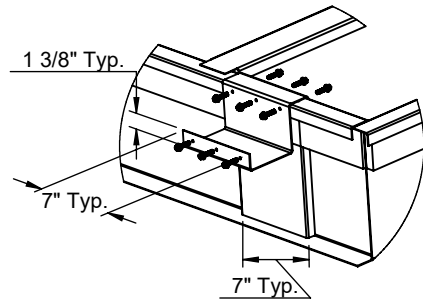
B



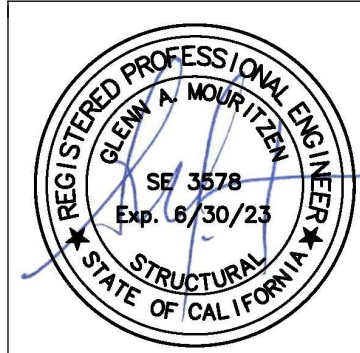
HOLD DOWN DETAIL



CURB DETAIL



DETAIL B



3847 WABASH DRIVE
MIRA LOMA, CA 91725

PHONE (951) 685-1101
FAX (619) 872-9799

SUBMITTED TO: _____
COMPANY: _____
JOB NAME: _____
EQUIPMENT: _____
NOTES: _____

FORM NO:
CBWC-300

DATE:
10/7/2021

PART NUMBER:
CBWCPRS SERIES

REV:
9

DRAWN BY:
ALL