

For wood, concrete, and steel attachments, see Roof Anchorage Detail, Form No. CB-60.

STRUCTURALLY CALCULATED WELDED ROOF CURBS FOR PREDATOR (SUN PRO) UNITS

PROVENT P/N	A	EST. WEIGHT
CBWCPRD371508	8"	125 Lbs.
CBWCPRD371511	11"	141 Lbs.
CBWCPRD371514	14"	157 Lbs.
CBWCPRD371524	24"	208 Lbs.

ZT, ZH, ZJ, ZR 037-150
ZF, XP, ZB 078-150

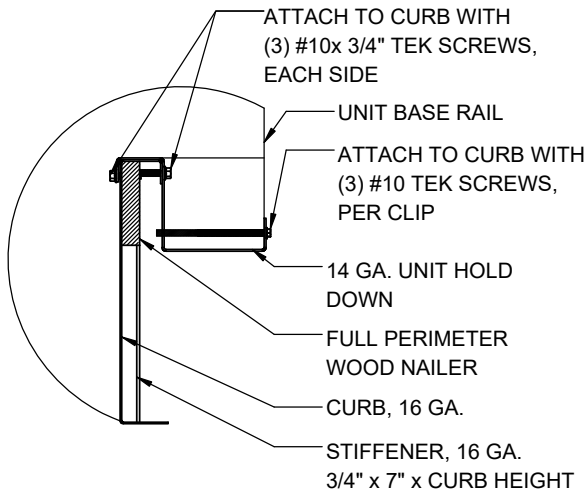
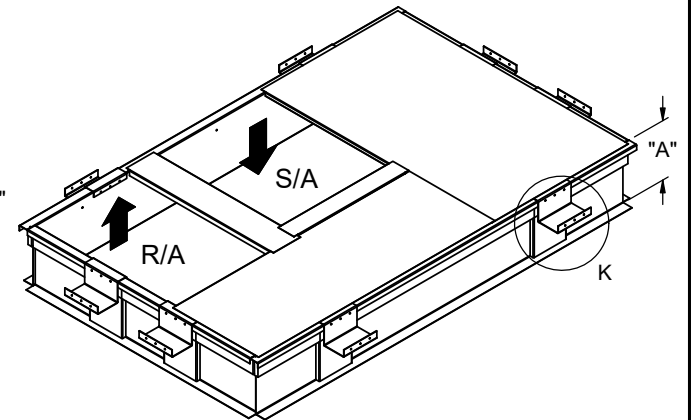
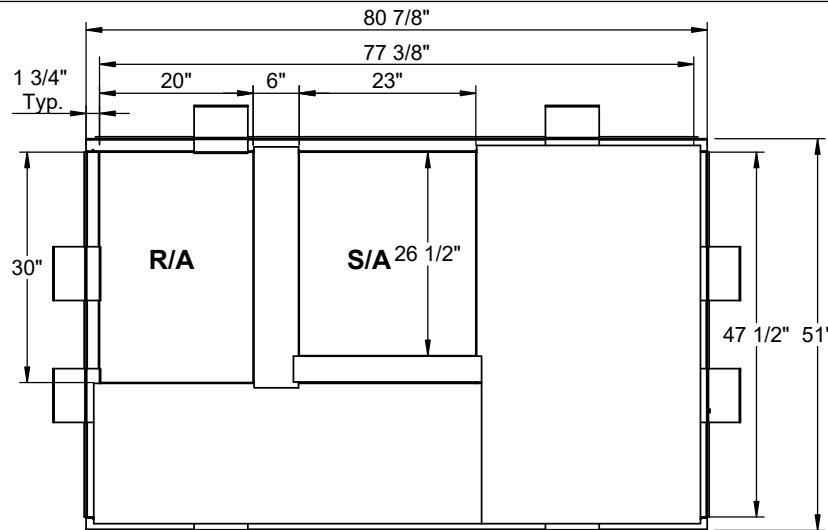
Meets seismic requirements for the following codes:
CBC 2022
IBC 2021

FEATURES

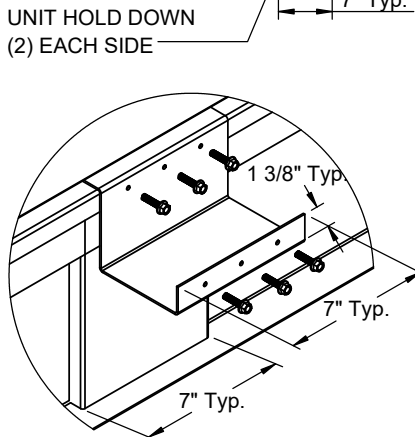
- Roof curb sides and ends are 16 Ga. galvanized steel.
- Gasketing package provided.
- Heat treated wood nailer provided.
- Insulated deck pans provided.
- Pitched curbs and taller curbs are available.

NOTES

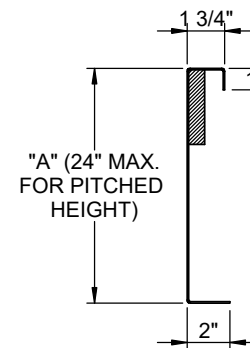
- Attach ductwork to roof curb. Flanges of duct rest on top of curb. Support ductwork below the curb.
- Thru the curbs utilities are available. Contact your York distributor or ProVent directly.



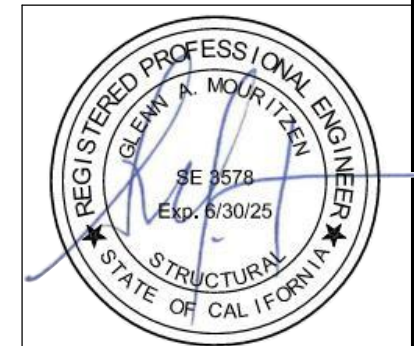
HOLD DOWN DETAIL



DETAIL K



CURB DETAIL



3847 WABASH DR.
MIRA LOMA, CA 91752

PHONE (951) 685-1101
FAX (619) 872-9799

SUBMITTED TO: _____
COMPANY: _____
JOB NAME: _____
EQUIPMENT: _____
NOTES: _____

FORM NO:
CBWC-113

DATE:
7/27/2023

PART NUMBER:
CBWCPRD3715 SERIES

REV:
9

DRAWN BY:
JG