

For wood, concrete and steel attachments see Roof Anchorage Detail, Form Nos. CB-60

STRUCTURALLY CALCULATED WELDED ROOF CURBS FOR SUNCORE UNITS

PROVENT P/N	A	EST. WEIGHT
CBWCSAV202508	08"	305
CBWCSAV202511	11"	340
CBWCSAV202514	14"	375
CBWCSAV202524	24"	469

FEATURES

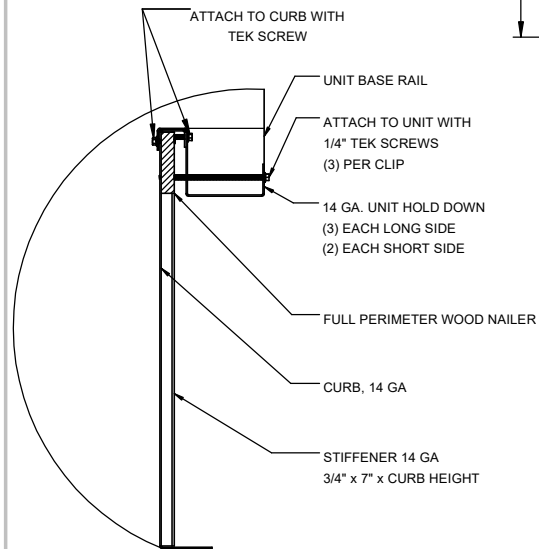
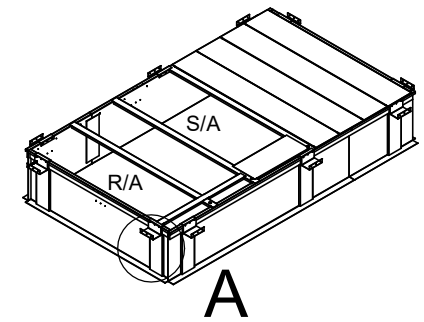
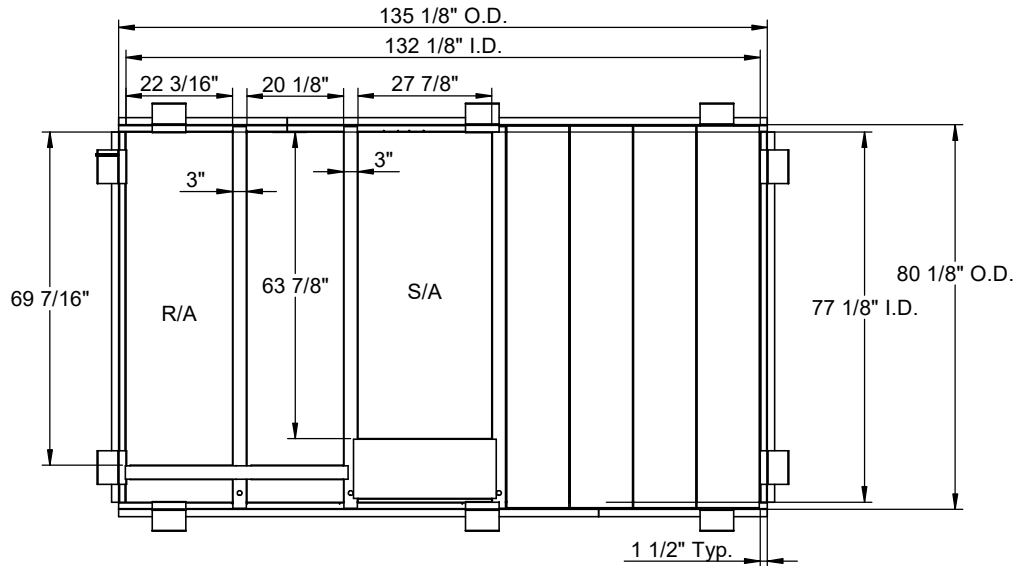
- Roof curb sides and ends are 14 Ga. galvanized steel.
- Gasketing package provided.
- Heat treated wood nailer provided.
- Insulated sloped deck pans provided.
- Pitched curbs and taller curbs are available.

Notes

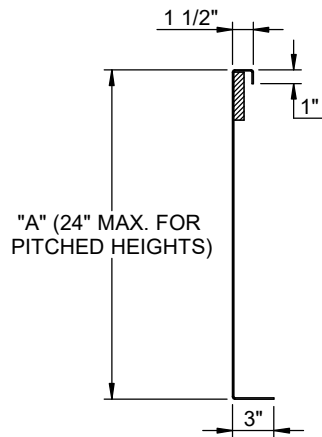
Attached ductwork to roof curb. Flanges of duct rest on top of curb. Support ductwork below the curb.

AV 20-25, AD 20-25, AE 13-15, AW 13-15, AH 18-20, AL 18-20, HV 15-20

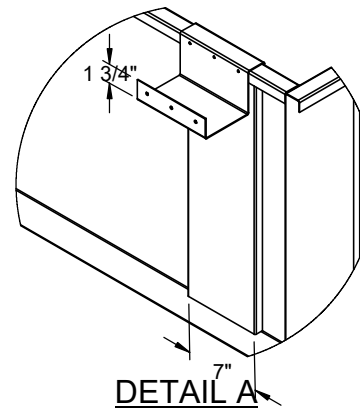
Meets seismic requirements for the following codes:
CBC 2022
IBC 2021



HOLD DOWN DETAIL



CURB DETAIL



DETAIL A



3847 WABASH DRIVE
MIRA LOMA, CA 91752

PHONE (951) 685-1101
FAX (619) 872-9799

SUBMITTED TO: _____
COMPANY: _____
JOB NAME: _____
EQUIPMENT: _____
NOTES: _____

FORM NO:
CBWC-122

DATE:
8/28/2023

PART NUMBER:
CBWCSAV2025 Series

REV:
1

DRAWN BY:
FMM