

For wood, concrete and steel attachments see Roof Anchorage Detail, Form Nos. CB-60

STRUCTURALLY CALCULATED WELDED ROOF CURBS FOR SUNCORE UNITS

PROVENT P/N	A	EST. WEIGHT
CBWCSAV2808	08"	305 Lbs.
CBWCSAV2811	11"	340 Lbs.
CBWCSAV2814	14"	375 Lbs.
CBWCSAV2824	24"	490 Lbs.

FEATURES

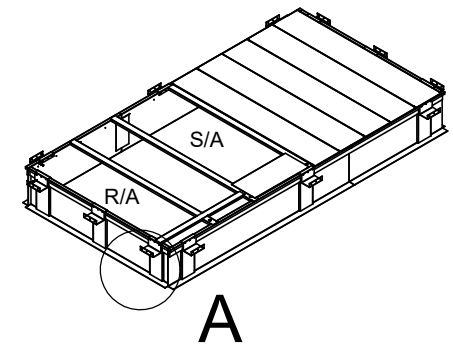
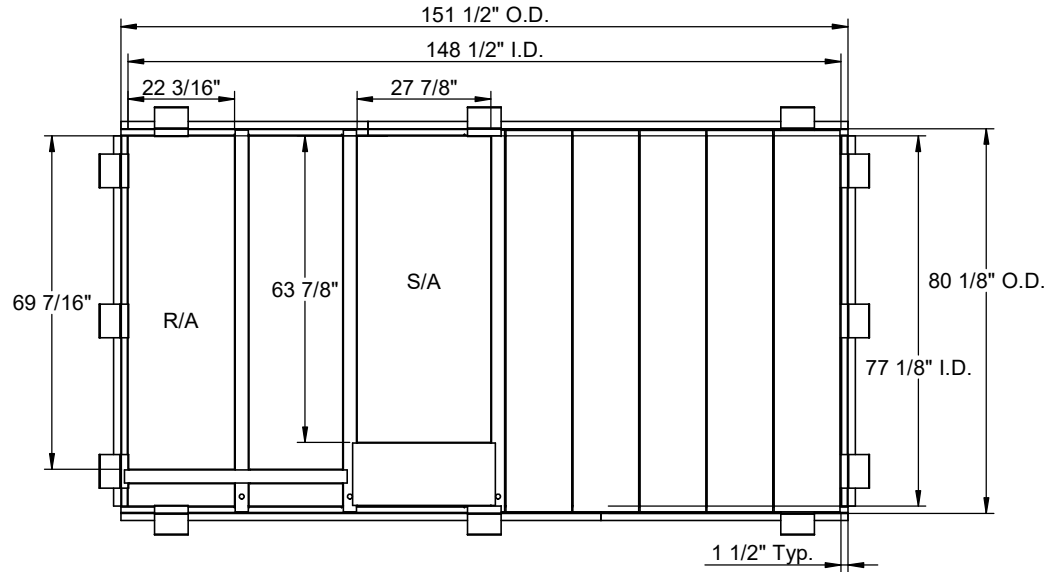
AV28, AD28, AE18-23, AW18-23, AH25, AL25, HV25

- Roof curb sides and ends are 14 Ga. galvanized steel.
- Gasketing package provided.
- Heat treated wood nailer provided.
- Insulated sloped deck pans provided.
- Pitched curbs and taller curbs are available.

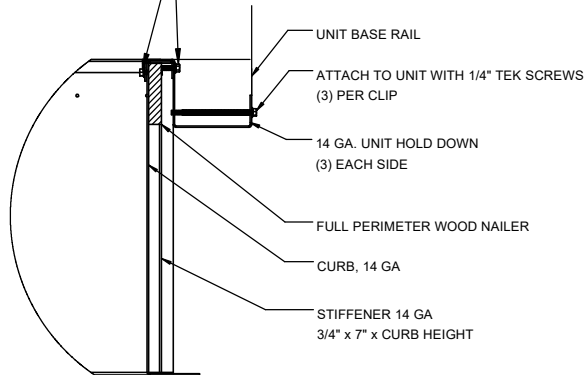
Notes

Attached ductwork to roof curb. Flanges of duct rest on top of curb. Support ductwork below the curb.

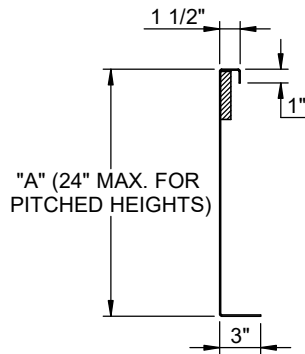
Meets seismic requirements for the following codes:
CBC 2022
IBC 2021



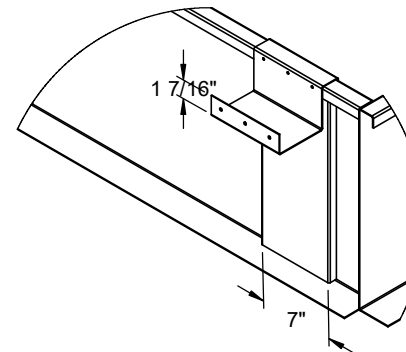
ATTACH TO CURB WITH TEK SCREW



HOLD DOWN DETAIL



CURB DETAIL



DETAIL A



3847 WABASH DRIVE
MIRA LOMA, CA 91752

PHONE (951) 685-1101
FAX (619) 872-9799

SUBMITTED TO: _____
COMPANY: _____
JOB NAME: _____
EQUIPMENT: _____
NOTES: _____

FORM NO:
CBWC-123

DATE:
8/28/2023

PART NUMBER:
CBWCSAV28 SERIES

REV:
1

DRAWN BY:
FMM