

For wood, concrete, and steel attachments, see Roof Anchorage Detail, Form No. CB-60.

STRUCTURALLY CALCULATED WELDED ROOF CURBS FOR SMALL SUNLINE 3-6 TON UNITS

PROVENT P/N	A	EST. WEIGHT
CBWCSUN367208	8"	80 Lbs.
CBWCSUN367211	11"	95 Lbs.
CBWCSUN367214	14"	109 Lbs.
CBWCSUN367224	24"	189 Lbs.

Meets seismic requirements for the following codes:
CBC 2022
IBC 2021

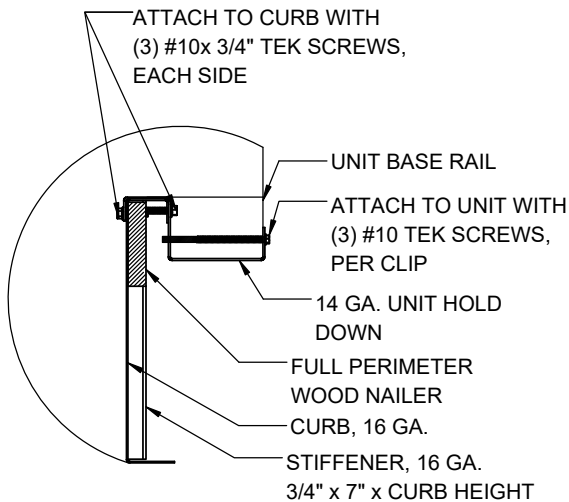
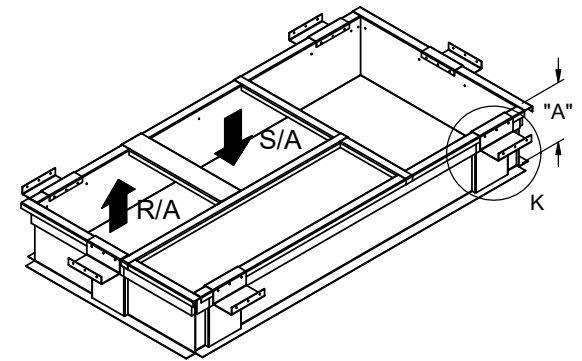
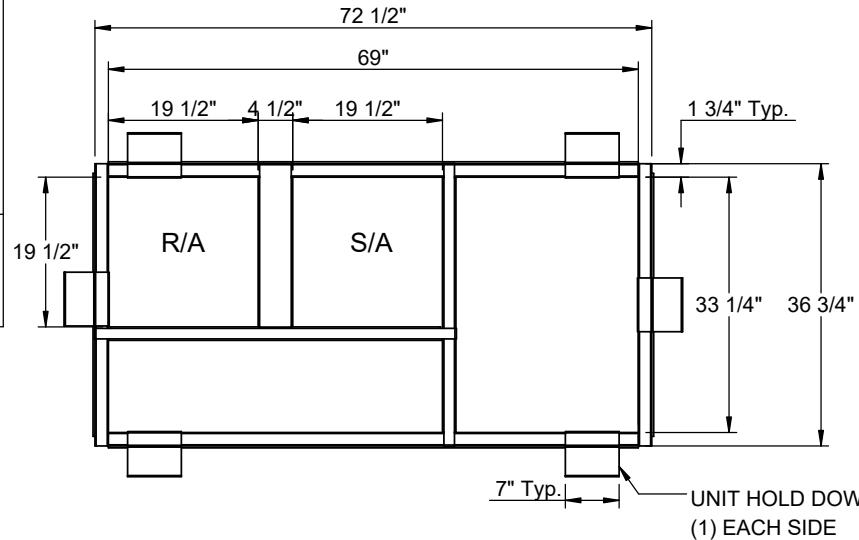
ZR, XN, XP 036-060
ZE, ZF 036-072

FEATURES

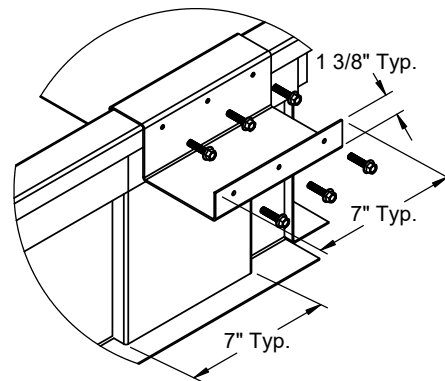
- Roof curb sides and ends are 16 Ga. galvanized steel.
- Gasketing package provided.
- Heat treated wood nailer provided.
- Insulated deck pans provided.
- Pitched curbs and taller curbs are available.

NOTES

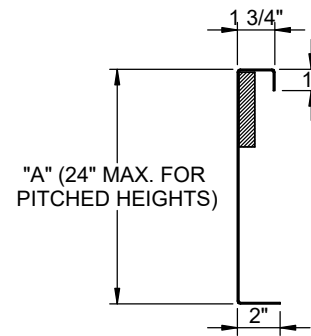
- Attach ductwork to roof curb. Flanges of duct rest on top of curb. Support ductwork below the curb.



HOLD DOWN DETAIL



DETAIL K



CURB DETAIL



3847 WABASH DR.
MIRA LOMA, CA 91752

PHONE (951) 685-1101
FAX (619) 872-9799

SUBMITTED TO: _____
COMPANY: _____
JOB NAME: _____
EQUIPMENT: _____
NOTES: _____

FORM NO:
CBWC-112

PART NUMBER:
CBWCSUN3672 SERIES

DATE:
7/27/2023

REV:
9

DRAWN BY:
JG